

The Wildlife series: the 1954 5¢ Beaver

CHARLES J.G. VERGE

During the 1950s, the Canadian Post Office Department issued a dozen stamps in support of Canada's annual National Wildlife Week. The Wildlife series includes a 5¢ Beaver stamp, Scott 336, issued April 1, 1954.

The stamps in the complete series, pictured in Figure 1, were issued in 1953 (Scott 320, 322, 323 and 324); 1954 (Scott 335, 336 and 343); 1955 (Scott 352 and 353); 1956 (Scott 360 and 361) and 1957 (Scott 369).

The 5¢ Beaver stamp was issued in panes of 100 subjects, perforated gauge 12. The Canadian Bank Note

Co. (CBN) laid down two plates to produce 51,450,000 Beaver stamps.

While most writers and catalog editors report this number, the web site of the Canadian Postal Archives states that 61,978,500 stamps were produced. If one adds the booklet stamp numbers (10,527,500) to the catalog numbers, the total is 61,977,500, making the difference in reported numbers only 1,000 stamps.

The 5¢ Beaver was the first Canadian commemorative issued in booklet format. The first-day cover in Figure 2 shows a booklet pane of five (plus its bilingual label) affixed. Each booklet

contained one such pane. Figure 3 shows proof impressions of the label, with the approved label in the center.

It was the first Canadian stamp booklet to be produced with only bilingual text (English and French) on the covers. From that point on, all booklet covers issued by Canada's postal service were bilingual. Prior to April 1954, booklet covers were either printed in English, French or bilingual text formats. Most of the Beaver booklets were stapled (2,004,000) while a small number were stitched (101,500).

Emanuel Otto Hahn (1881-1957)



Figure 1. Canada's 12-stamp wildlife series of the 1950s includes the 5¢ blue Beaver stamp of 1954, Scott 336 (upper right).



Figure 2. A first-day cover for the 1954 Beaver booklet pane, which included five 5¢ stamps and a label promoting the use of postal money orders. Courtesy of Canadian Postal Archives (CPA).

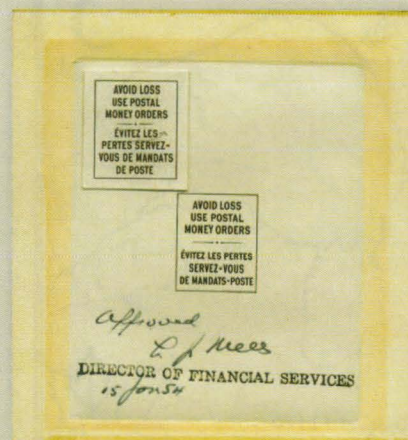


Figure 3. Proofs of the bilingual booklet label for the Beaver issue. The approved corrected version in the center. Courtesy of CPA.



Figure 4. From left to right, artists who created the 5¢ Beaver design: designer Emanuel Hahn, modeler Herman Schwartz, and engraver Silas Robert Allen. Schwartz was also the designer of the 50¢ Bluenose stamp of 1929, Canada Scott 158. *Courtesy of CPA.*

was responsible for the designs of many of the stamps in the Wildlife series, including the 5¢ Beaver. Hahn, shown at left in Figure 4, was born in Reutlingen, Germany, in 1881, and immigrated to Canada with his family in 1888. Hahn was one of the three founding members of the Sculptor's Society of Canada in 1928, and he became the group's first president.

The study of wildlife was a passion for Hahn that is reflected in his writings, sculpting, and designs of stamps and coins. In addition to the Wildlife series he also designed two 1953 issues: the \$1 Totem Pole stamp (Scott 321) and the 4¢ Coronation stamp (Scott 330).



Figure 5. Hahn's preliminary designs for a 4¢ Beaver stamp. *Courtesy of CPA.*

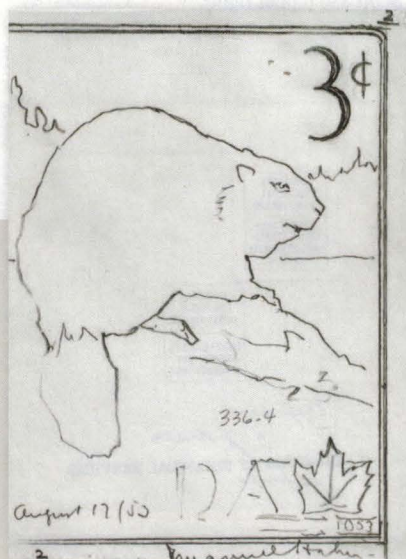


Figure 6. A Hahn sketch for a 3¢ Beaver stamp, and the completed design. *Courtesy of CPA.*



Figure 7. Approved models for the Wildlife issue, prepared by Schwartz. *Courtesy of CPA.*

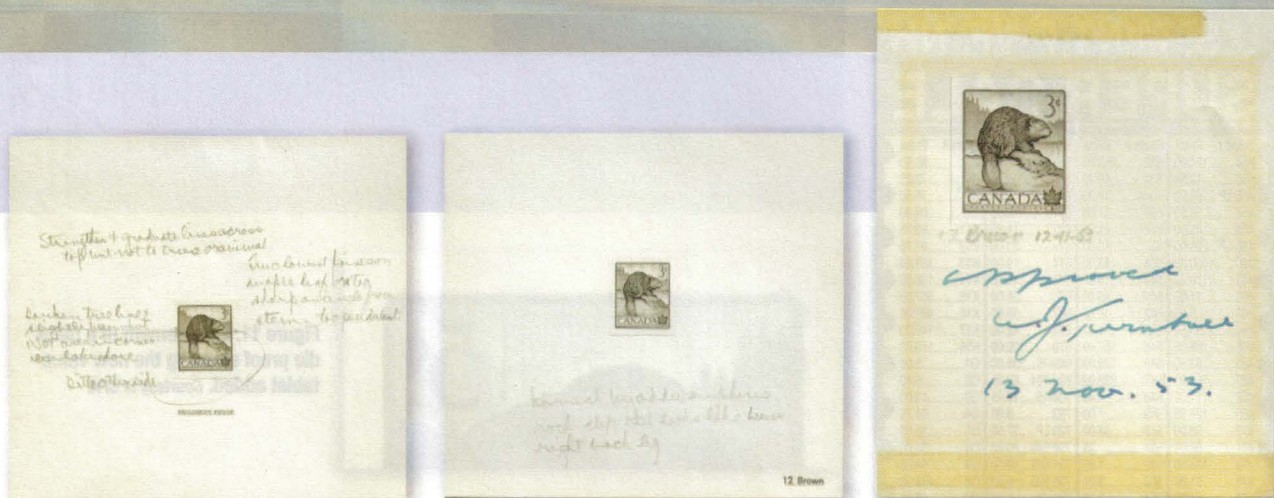


Figure 8. Die proofs prepared for approval and comments. The proofs at left and center bear notations made by an unknown hand. The one on the right is the approved version signed by the Deputy Postmaster General, W. J. Turnbull. Courtesy of CPA.

Herman Herbert Schwartz (1885-1962) was the modeler for the stamp. Schwartz, shown at center in Figure 4, was born in Nova Scotia on May 13, 1885, and showed no interest in the family spice business founded by his grandfather in 1841.

In 1909, at the age of 19, he was hired as an apprentice by the American Bank Note Co. of Ottawa, where he worked for 47 years, retiring in 1956. He contributed work on 154 stamps of Canada, including his design of one of Canada's most famous stamps: the 1929 50¢ Bluenose (Scott 158).

Silas Robert Allen (1888-1958) engraved the picture designed by Hahn. Allen, shown at right in Figure 4, was a master steel engraver, born in Ottawa in 1888. He also was a well-known oil painter and photographer.

His first worked with the British American Bank Note Co., but in 1922

he began work for CBN, a subsidiary of American Bank Note. He engraved 62 stamps for Canada, including the 1954 Queen Elizabeth II definitives, Scott 337-342, and most of the Wildlife series. He also engraved a number of stamps for the Bahamas and Norway.

Hahn started working on the 5¢ Beaver design in May 1953 and prepared two 4¢ designs, of which the one with

the beaver facing right was retained for further consideration (Figure 5).

Originally the beaver was proposed as a 4¢ denomination, the domestic letter rate introduced July 1, 1951. The local letter and postcard rates at the time were 3¢.

In August, Hahn was asked by the Post Office Department to change the value of the stamp from 4¢ to 3¢.

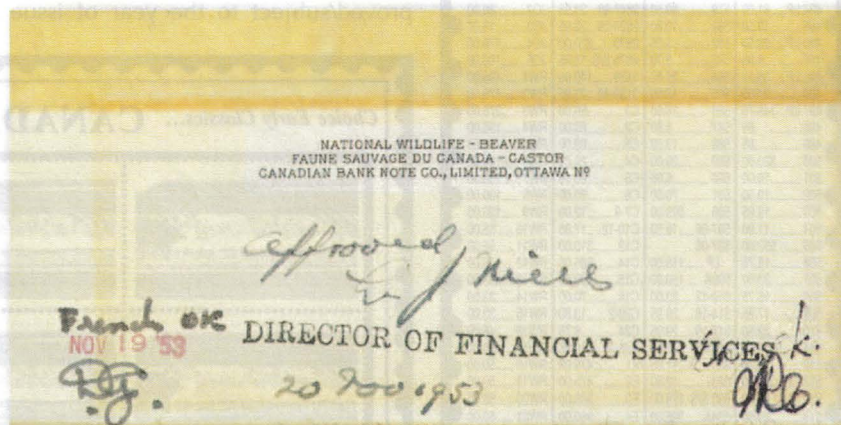


Figure 9. Die proof of the approved marginal inscriptions. Courtesy of CPA.

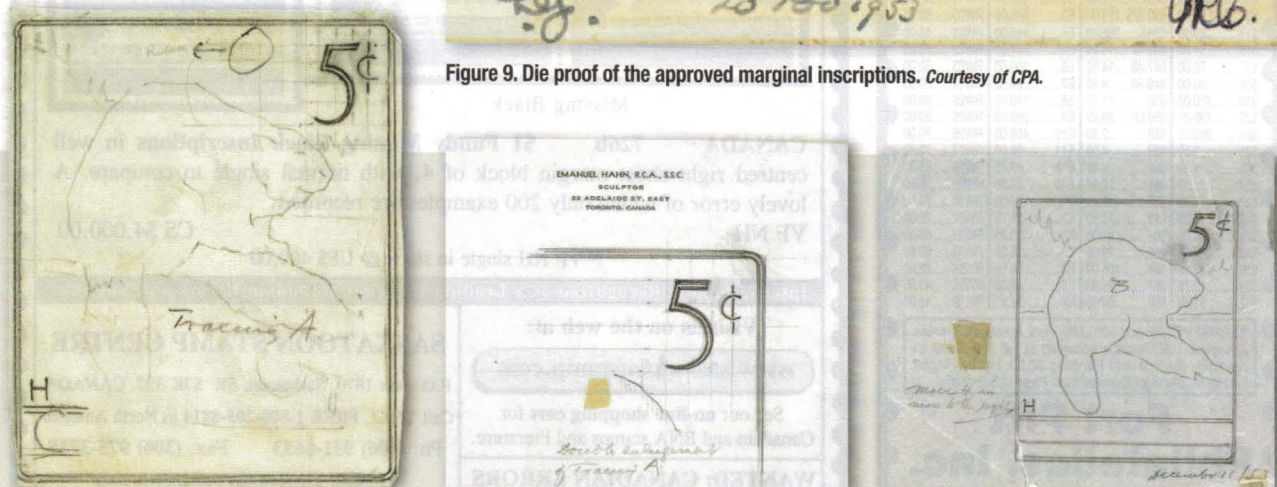


Figure 10. Tracings made by stamp designer Emanuel Hahn when the denomination was changed from 3¢ to 5¢. Tracing A is shown at left. An enlargement of the value tablet appears in the center. Tracing B is on the right. Courtesy of CPA.

U.S. MINT F-VF, NH SUPER SALE

Scott #	Price	Scott #	Price	Scott #	Price	Scott #	Price
454	124.00	533	255.00	658-68	270.00	K7	93.50
455	12.35	534	18.70	659	3.85	K8	72.25
455 LP	68.00	534A	49.30	670	3.50	K9	75.50
457	38.50	535	11.00	671	3.50	K10	68.00
458	45.00	536	21.25	672	14.50	K11	80.75
458 LP	225.00	537	10.00	673	22.00	K12	97.75
460	1020.00	538	13.60	674	19.00	K13	153.00
461	170.00	540	15.30	675	46.00	K14	136.00
462	11.00	541	45.00	676	26.00	K15	607.00
463	5.95	542	15.50	677	36.00	K16	489.00
464	93.50	543	1.00	678	42.00	K17	140.00
465	58.00	545	187.00	679	120.00	K18	119.00
466	93.50	546	128.00	689-75	335.00	Q1	5.00
467	765.00	547	232.00	692-701	69.95	Q2	6.40
468	111.00	548	4.40	704-15	18.95	Q3	14.00
469	127.50	549	7.00	723	8.00	Q4	38.75
470	68.00	550	38.00	723 LP	37.50	Q5	33.00
471	68.00	551	25	730 S/S	20.00	Q6	54.00
472	128.00	552	1.85	731 S/S	19.00	Q7	68.00
473	51.00	553	3.20	735 S/S	9.50	Q8	148.00
474	64.00	554	2.10	740-49	6.50	Q9	68.00
475	229.50	555	21.20	750 S/S	28.00	Q10	292.00
476	297.50	556	21.20	751 S/S	9.00	Q11	36.00
477	1190.00	557	21.20	756-65	7.95	Q12	380.00
478	935.00	558	38.00	803-31	16.95	QE1-4	24.95
479	467.50	559	9.00	832	5.50	J61	2.25
480	382.50	560	55.00	833	14.00	J62	2.45
481	1.30	561	18.00	834	65.00	J63	12.25
482	2.30	562	23.00	839-51	19.95	J64	12.25
483	19.00	563	2.10	839-51 LP	99.95	J65	19.25
484	14.00	564	8.40	1030-52	11.50	J66	85.00
486	1.20	565	5.80	1053	55.00	J67	105.00
487	19.50	566	27.00	1278-95	16.00	J68	1.05
488	4.25	567	22.00	1581		J69	5.00
488 LP	23.40	568	19.95	1612	17.95	J70	3.25
489	5.95	569	35.00	1633-82	13.95	J71	4.50
489 LP	38.00	570	56.25	1686-89		J72	25.50
490	.75	571	48.75	S/S	12.50	J73	22.95
490 LP	5.30	572	95.00	1844-69	8.00	J74	51.00
492	11.00	573	185.00	1953-02	23.95	J75	127.50
492 LP	66.00	575	8.25	2168-96	29.00	J76	175.00
493	20.00	576	1.65	2216-19		J77	33.00
493 LP	136.00	577	2.10	S/S	14.95	J78	42.00
494	12.75	578	102.00	2647-96	24.95	JQ1	11.00
494 LP	81.00	579	89.50	2624-29	23.95	JQ2	88.00
495	13.50	581	10.80	2870	220.00	JQ3	15.00
495 LP	93.50	582	5.25	2875 S/S	15.95	JQ4	176.00
496	4.65	583	2.70	C1	59.00	JQ5	108.00
496 LP	38.25	584	29.60	C2	89.00	RW1	495.00
497	24.65	585	18.00	C3	89.00	RW2	475.00
497 LP	148.75	586	18.00	C4	21.20	RW3	275.00
498	.65	587	8.80	C5	80.00	RW4	195.00
499	.65	588	13.60	C6	90.00	RW5	195.00
500	320.00	589	28.00	C7-9	12.00	RW6	130.00
501	16.00	590	6.05	C10-12	17.85	RW7	130.00
502	19.50	591	70.00	C13	310.00	RW8	130.00
503	19.85	595	325.00	C14	585.00	RW9	130.00
504	11.90	597-06	18.50	C15	900.00	RW10	55.00
505	552.00	597-06 LP	115.00	C18	70.00	RW11	55.00
506	15.75	599A	150.00	C20-2	13.80	RW12	45.00
507	33.00	610-12	23.00	C24	6.75	RW13	33.00
508	15.75	614-16	29.95	C25-31	13.95	RW14	33.00
509	17.85	617-19	29.95	E1	475.00	RW15	33.00
510	22.50	620-21	17.50	E2	475.00	RW16	45.00
511	11.90	622	11.00	E3	265.00	RW17	50.00
512	11.90	623	12.50	E4	950.00	RW18	50.00
513	17.00	630 S/S	425.00	E5	207.00	RW19	50.00
514	51.00	634A	395.00	E6	150.00	RW20	50.00
515	59.50	632-42	14.95	E7	84.00	RW21	50.00
516	51.00	647-48	14.50	E8	140.00	RW22	50.00
517	88.00	649-50	4.95	E9	265.00	RW23	50.00
518	80.00	656 LP	59.95	E10	405.00	RW24	50.00
519	470.00	658	11.50	E11	20.00	RW25	50.00
523	795.00	658 LP	59.95	E12	43.75	RW26	50.00
524	290.00	658	2.80	E13	31.50	RW27	70.00
525	3.10	659	4.00	F1	72.00	RW28	65.00
526	32.00	660	4.00	K1	26.75	RW29	75.00
527	25.50	661	22.00	K2	26.75	RW30	75.00
528	11.50	662	22.00	K3	55.25	RW31	75.00
528A	68.00	663	13.50	K4	59.50	RW32	68.00
528B	28.00	664	32.50	K5	65.00	RW33	68.00
529	4.25	665	29.00	K6	89.25	RW34	68.00
530	2.15	666	105.00			RW35	45.00
531	12.75	667	15.50			RW36	45.00
532	51.00	668	24.00				

TERMS: VF - XF add 50%. MC, Visa, American Express Accepted. U.S. Postage accepted at full face value as payment. Postage and Handling \$2.50. Lightly Hinged less 25%. Send for Complete 30 Page U.S. Pricelist.

**Fort Pitt
Philatelics, Inc.**
P.O. Box 6009, Pittsburgh, PA 15211
Phone 412-431-3800
Fax 412-431-3809

O CANADA

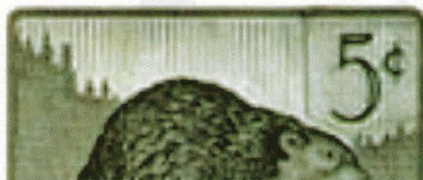


Figure 11. Enlargement of a black die proof showing the new value tablet added. Courtesy of CPA.

A sketch of the proposed 3¢ stamp is shown at top in Figure 6, based on the previous 4¢ approved design. It is dated August 17 and signed by Hahn. He turned this into a more complete design later that month, shown at right in Figure 6.

On Sept. 30, 1953, L. J. Miles, the director of Financial Services (the department responsible for the Philatelic Bureau), approved a photo model prepared by Schwartz with a miniature of the stamp noting, "Approved/subject to the year of issue

'1954' being made more obscure" (Figure 7).

Previous Hahn designs had shown 1953 as the year of issue.

The production of the stamp die was turned over to Allen. He submitted a brown progressive die proof to his boss or to the Post Office for consideration on Nov. 2, 1953 (Figure 8, left). It is unclear as to who wrote the comments requiring changes to the die. These included: "strengthen & graduate lines across top but not to trees or animal"; "two lowest points on maple leaf are

Choice Early Classics... CANADA • BNA ...to Modern Varieties



Missing Black

CANADA 726b \$1 Fundy Missing Black Inscriptions in well centred right sheet margin block of 4, with normal single to compare. A lovely error of which only 200 examples are recorded.

VF NH

CS \$4,000.00

F-VF NH single in stock @ US\$ 400.00

Internationally Recognized as a Leading Dealer in Canadian Errors and Varieties

Visit us on the web at:

www.saskatoonstamp.com

See our on-line shopping cart for Canadian and BNA stamps and literature.

WANTED: CANADIAN ERRORS

inverts ♦ misperfs ♦ imperforates
missing colours ♦ colour shifts
printed on gum ♦ better varieties

SASKATOON STAMP CENTRE

P.O. Box 1870, Saskatoon, SK S7K 3S2 CANADA

Call TOLL FREE 1-800-205-8814 in North America

Ph: (306) 931-6633 Fax: (306) 975-3728

E-mail: ssc@saskatoonstamp.com



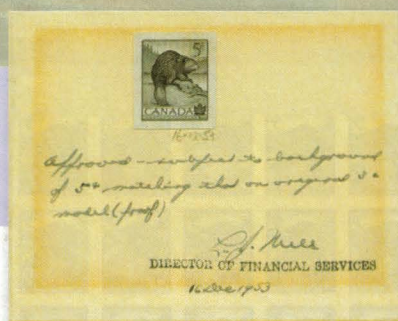


Figure 12. Two die proofs on card showing comments made by L. J. Miles, director of Financial Services. Courtesy of CPA.

two sharp on angle from stem... too pendulant"; and, "darken tree line & slightly below but NOT area in corner on lakeshore... ditto on other side."

Another progressive die proof (Figure



Figure 13. Final approval by the Deputy Postmaster General, Dec. 28, 1953. Courtesy of CPA.

Thousands of Illustrated Covers On Our
Brand New Easy To Use Website

www.coverspecialist.com

The finest covers are available to you
in the comfort of your own home.

Visit our website and see why we are
the leading dealer of the following covers:

- * Pan American Clippers
- * Early Flight Covers
- * Zeppelins/Hindenburgs
- * Philippine Flights
- * Cuban Flights
- * WWII Patriotics
- * Autographs on US Covers
- * Early First Days

Howard Hughes Record Flight Around The World



Autographed by Howard Hughes, Dick Stoddart, & Harry
Connor. Very Fine Condition.



If you are without internet access contact us
to receive our color illustrated brochures of
the above covers.

10 Chestnut Drive, Bedford, NH 03110
1-800-332-3383

Join America's Premier
Stamp Collector's Club

**THE AMERICAN
PHILATELIC
SOCIETY**

Privileges of membership include:

- Award-Winning Magazine
- Extensive Research Library
- Authoritative Expertizing Service
- Informative Website — www.stamps.org
- Secure Internet Sales — www.StampStore.org
- Low-Cost Stamp Insurance
- Mail Sales Circuit Service
- ONE LOW membership fee
- and much, much more!

Send for your free membership
brochure today!

100 Match Factory Place, Dept. TJ
Bellefonte, PA 16823
Phone 814-933-3803 • Fax 814-933-6128
Online at www.stamps.org



We share your passion

GERMANY MINT VF NH

Sc. #	Price	Sc. #	Price	Sc. #	Price	Sc. #	Price
330-3, 5-6	153.00	1188	1.00	B332-3	29.00	B862-5	6.10
391-5	24.75	1225-8	1.50	B334-7	47.00	B866	1.15
397	13.90	1229	1.00	B338-41	29.00	B867-72	7.85
399	3.00	1258-60	3.00	B342-3	11.40	B873-7	6.85
404	24.00	1275-6	2.40	B344-7	28.15	B878-9	2.10
436-41	80.00	1358-60	1.35	B348-9	5.20	B880-3	9.50
448 blk	7.50	1392-3	5.50	B350-3	11.85	B885-9	8.15
496	1.15	1415-6	4.40	B355	1.65	B890-4	11.25
498-501	5.20	1440-1	9.00	B356-9	12.30	B895-6	2.55
539a bklt	10.40	1468	1.00	B360-1	2.95	B898-901	9.50
593A-9	360.00	1498	1.05	B362-5	4.60	B902-6	11.25
651a	12.00	1530a bklt	5.00	B366a-7a	1.20	C25-6	540.00
658b	28.00	1540A	6.40	B368-71	3.00	C26	390.00
660a f	38.00	1546	1.05	B372-5	3.00	C40-42 w/ APS	
663 from souvenir sheet	15.00	1573-4	5.00	B380-3	1.65	certs pl #	
664 from souvenir sheet	15.00	1601-2	7.00	B388-91	1.80	singles	2100.00
667-68	50.00	1630-4	5.75	B422-5	1.20	C56 hor	
669	37.00	1635	1.00	B433	1.15	gum	200.00
688	20.65	1638-41	3.80	B436-9	1.20	C59-60	5.00
689	8.45	1642-3	9.50	B455-8	2.15	C61-3-4	17.35
689-91	29.00	1649-52	4.00	B459-62	1.25	C61-4	18.00
690	11.00	1670-7	7.25	B472-5	2.00	C61-4 blks	72.00
691	13.15	1689-90	1.40	B485-8	1.65	O87	1.60
692	4.70	1699-1714	16.00	B491-4	2.40	S1	2.85
693	29.00	1744-5	8.00	B497-9	3.80	S4	1.40
695	29.00	1750-2	3.20	B498-9	3.10	S8 margin	10.40
696	15.00	1829-30	1.20	B512-5	2.00	S8	2.60
697	3.90	1859	5.80	B517-20	3.00	S9	4.25
697-701	47.00	1878-80	5.25	B521-4	2.00	S19 blk	32.00
701	31.50	1891	2.00	B521-5	2.20	S28-40	105.00
722	8.80	1894-5	3.75	B526-9	2.50	SNB8a	32.50
724	5.20	1902	3.00	B538-41	2.50	SNB8b	32.50
725	3.10	1922-4	5.00	B547-8	4.00	SNB3-6	42.00
726	3.80	1965-6	2.25	B577-80	2.50	SNB9	4.00
727	10.40	1974-6	2.15	B583-6	2.30	SN30	46.00
728	6.50	1977	1.95	B589-92	2.50	SN35-41	470.00
729-30	7.40	1978	1.95	B594-7	3.00	SN37	18.75
731	6.50	1994-7	3.25	B600-3	3.00	SN38	123.00
732	5.55	2001	2.10	B605-8	2.70	SN39	169.00
733	2.25	2011-3	2.10	B609-10	2.40	SN41	84.00
734	5.00	2021	1.95	B611-4	3.40	SN61-63	175.00
735	2.80	2022	1.95	B616-9	4.00	SN73	36.00
736	2.80	2071	2.10	B620-2	3.60	SN92	11.30
738	4.25	2072-3	1.65	B628-9	2.50	SN94-8	54.00
740	1.80	2074-7	2.85	B630-3	4.25	SN97	7.50
741	4.70	2081-2	2.20	B635a	4.50	SN98	33.00
744-5	9.55	2089	2.10	B636-9	3.25	SN103	5.20
745	2.45	2101	2.10	B641-2	3.00	SN104	6.40
746	1.80	2112	3.00	B643-6	4.00	SN106	3.20
747	1.50	2113-6	5.00	B647-50	2.50	SN107	3.80
748-9	7.15	2123	3.00	B652-3	2.50	SN111	8.80
749	6.20	2142	3.00	B658-61	3.80	SN112	5.80
750	1.65	2156	3.00	B666-9	6.50	SN113-4	5.25
751	1.80	2164	5.00	B670-3	3.00	SN115	15.75
755-9 blks	40.00	2166-7	2.50	B675-6	4.00	SN116-7	4.50
756	1.15	2177	2.25	B678-81	8.25	SN118-9	4.60
756 blk	4.50	B79-81	35.75	B687-8	4.60	SN120-36	40.00
757 blk	1.80	B82-9	60.00	B689-92	5.00	SN131	5.70
758	1.80	B90	14.00	B694-6	3.60	SN134	18.00
759	6.50	B91	59.00	B697-700	4.60	SN136	4.00
759 block	26.00	B91-2	115.00	B701-4	6.00	SN140-1	5.00
771-2, 2A	7.10	B102	32.50	B705-12	10.00	SN143	5.00
772	3.20	B118	7.40	B714-9	7.00	SN145	1.85
772	2.95	B1196	5.00	B720-3	6.00	SN156	2.45
790-1	10.00	B134-6	8.80	B724-7	6.00	SN158-9	1.65
793-6	8.00	B140	7.00	B728-32	9.00	SN159-9 prs	3.30
793-7	10.40	B144	41.00	B734-8	6.75	SN165-9	8.40
794-7	10.25	B145	37.00	B741-4	5.50	SN188	1.95
795-7	10.00	B169	18.75	B745-9	9.50	SN215-22	10.55
796	7.50	B181	2.50	B750	1.05	SN235-50	8.00
805-6	1.35	B191	10.00	B751-5	7.50	SN251-5	3.50
807-8	1.40	B192	5.20	B758-61	6.50	SN255	2.75
808	1.20	B198-9	8.00	B762-6	7.50	SN256-61	1.80
813-6	1.30	B202	1.05	B768-72	7.50	SN316-25	10.95
818-20	1.10	B203	7.20	B775-8	6.25	SN137a bklt	5.25
821	1.45	B204	9.75	B779-83	7.50	SN322	1.25
839	1.80	B205	6.00	B784	2.50	SN335-7	1.45
936-51	8.00	B209-11	2.45	B785-9	6.80	SN359-76	28.00
946	1.15	B216	1.15	B792-6	6.80	SN376	3.40
952-6	6.75	B227	1.00	B797-800	5.80	SN409	1.15
956	5.50	B231-6	8.00	B802-6	7.25	SN411-4	3.00
956 pr	11.00	B241-2	1.00	B809-12	6.25	SN487	1.85
1026-44	14.80	B257-69	10.00	B813-7	7.75	SNB1-3	230.00
1074-85	7.70	B269	1.10	B820-4	8.95	SNB3a	550.00
1074-85 (less B2)	7.10	B298-301	8.00	B825-6	1.95	SNB12	12.00
1074-85	7.70	B302-3	8.80	B827-30	5.65	SNB13	5.00
1074, 6-82, 3, 5	7.50	B304-5	12.80	B831	1.05	SNB14-6	2.65
1074	3.25	B318	26.00	B832-6	6.50	SNB17	1.65
1075b bklt	4.50	B324	12.00	B837-41	6.50	SNB18	1.65
1075c	7.15	B327-30	65.00	B842-3	2.10	SNB70-3	1.55
1080	1.15	B330	45.00	B844-7	7.95	SNB79-82	1.50
1128-31	1.60	B331	21.00	B850-4	8.95	SNB115-8	4.25
				B855-9	6.50	SNB124-7	2.60
						SNB137-40	1.75

TERMS: Payment with order please. Five day return privilege. Alternate choices appreciated. Checks, money orders, VISA, MasterCard, American Express, Discover, and full gum U.S. postage at face value accepted for payment. Add \$2.00 for insurance. California residents include 7.75% sales tax. Free price list included or upon request.

MARLIN LARSON, INC.
217 Country Garden Lane, San Marcos, CA 92069
Phone (760) 744-1435 • Fax (760) 744-5119

O CANADA



Figure 14. Half-pane of 50 plate proofs in ultramarine, with Miles' approval signature extending diagonally across several subjects at lower right. Courtesy of CPA.

8, center) was prepared making the corrections requested and submitted to the same individual whose comments on November 12 were, "correct by added emphasis/rock cleft that looks like beaver right leg."

Again the correction was made and the Deputy Postmaster General, W. J. Turnbull, approved the brown die proof

for production on November 13 (Figure 8, right).

While this was going on, work was being done on other parts of the printing plate. On November 20, Miles approved the marginal inscriptions (Figure 9).

Sometime in late November or early December, the government decided to increase the postage rates by 1¢, effective

Dollar Stamp Store

Where every stamp, set, souvenir sheet, sheetlet, cover, maximum card, first day leaf and more, is only \$1

Search for thousands of items by country, region, topic, type. Nothing could be easier!

www.dollarstampstore.com



UNITED NATIONS PERSONALIZED ISSUES! OFFICIAL U.N. HONG KONG 2004 SHEET \$75.00

The United Nations Postal Administration attended the Hong Kong 2004 Stamp Expo from Jan. 30 - Feb. 5 and issued a special 37-cent Sheet with a Red & Blue border honoring the "Year of the Monkey". Only 1,000 of this Official U.N. sheet were issued and quickly SOLD OUT. We are fortunate to have a small supply of the M/S available at ONLY \$75.00 (plus \$6.00 shipping). Strict Limit 1 per customer. We expect the UN to issue one or two of these personalized sheets per year. If these are included in album supplements for 2004, prices will rise sharply.

SHEET #2 ESSEN 2004 - ONLY 2000 ISSUED - \$35.00

HENRY GITNER PHILATELISTS, INC.

Philately - the quiet excitement!

53 Highland Ave., P.O. Box 3077, Middletown, NY 10940

1-800-947-8267 (94-STAMP) 845-343-5151 Fax 845-343-0068

e-mail hgitner@hgitner.com • www.hgitner.com



Zillions of Stamps Online Dealers

The World at Your Fingertips

A World of Stamps

British Empire, Worldwide, Reasonably Priced Sets and Singles, Mint and Used including The Overlooked Common Items. From 5¢ to \$500. Want Lists Serviced as we build our Online Inventory.

Abegweit Stamps

Canada & Commonwealth

AStamps

Worldwide Stamps

Birmingham Stamp Co.

U.S., Better Foreign

Bruce M. Moyer

United Nations Stamps and Covers

Connections

Topicals & Worldwide — U.S., U.S. Used, Canada, France, Monaco, Topicals

County Stamp Center

New Issues, Want List Service

Dale Enterprises Inc.

"One-of-a-Kind" items, U.S. Classic, Airmails, Errors, Officials, Periodicals, etc...

Desiesco Inc.

Worldwide

DMS Stamps

U.S.A. & Worldwide

Douglas Cook Inc.

Worldwide, Topicals, Gold and Silver Foil Stamps

E. Edward Humphreys

U.S. & British

Europapost.com

U.S. Stamps, Covers

Genesis Stamp Company

Worldwide and United States Airmail, U.S. Revenues, B.O.B., Canada, Italy and Colonies

Guillaume Vadeboncoeur

Canada & BNA, British Commonwealth & Worldwide issues with focus on quality items and elusive issues.

Herrick Stamp Company

Worldwide, Topical, Hard-to-Find Stamps

Housatonic Collectibles

19th Century U.S., German Area, British Commonwealth

James Juracek

Europe, Scandinavia & Worldwide Selections

James John Rydzewski

Scouts, Music Instruments, Composers, Butterflies, Insects, Sports, Chess, Flowers, Orchids. Worldwide Topicals, Mint, Used, First Day Covers, Maximum Cards, Canceled, Postal Stationery

Kucia Philately

U.S.A. Stamps

Latin American Stamps & Covers

Argentina and Latin America

Lebanon Stamp Shop

Worldwide Stamps

Little Egypt Stamps

British Colonials, Europe, Worldwide Airmail

Mehdi Stamps

Persia - Iran

Mike's Stamps

Quality U.S. and Foreign Stamp Material

North Bay Stamps

Germany, States, Colonies, Occupations, etc. Postal History, POW, WWII Propaganda, Scott or Michel items

Philip S. Horowitz

(since 1956)

Worldwide, especially Canada, Newfoundland & Provinces

Philip Kuehnle Stamp Co.

U.S. year sets, popular sets, Sheets

Postage Stamp Brokers

Worldwide

Prairie Stamps

Better European & Worldwide

Regency Stamps

U.S.A., British Commonwealth, German-related areas, Worldwide Singles & Sets

RG Enterprises

Worldwide, U.S., Possessions

Richard Sonshine

U.S., World, Mint, Used, Precanceleds, FDC, Covers, PNC, Lots, Want Lists Filled, Email Price List Available. Bargains, 1000's Under \$.10 Each, 13,000+ StampFair Auctions as Rick MS.Email: R254MS@aol.com

Robert F. Derkits

U.S. new and old, used, unused

Rocky Mountain Stamps

United States and Worldwide Classics

Ron Gates Stamps

U.S., Worldwide, Europe, B.C.

Saltfleet Stamps

Canada, Great Britain, Commonwealth, World, Topicals, New Issues

Sam Houston Duck Co.

Duck Stamps, Auctions, Errors

Skyline Stamps

Germany and Area

Stamp and Coin Shop

U.S., Germany

Stamp Street

Worldwide, U.S.

Stateside Stamps

Worldwide, large stock with many elusive issues. High quality foreign stamps to Modern at fair market prices. We also provide a great resource for your topical needs. APS, FCPS, SCC, ATA

Steve Levine

United States Postal Stationery - Postal Cards, Envelopes, Air Letter Sheets, Cut Squares, and First Day Covers of Postal Stationery Issues

Steve Robbins

U.S. (including Commemorative Panels), Western Europe, Great Britain and Commonwealth, Japan, Ryukyu, and South Pacific including Papua New Guinea

Sunset

U.S. Pre-1940, Airmail, BOB, Collections

SWSTAMPS

U.S. Mint, used, BOB, Canada, United Nations, British Empire, Worldwide

Terry Orr

Better U.S. and WW Singles and Sets

The Classic Collector

Classic and rare stamps

The Stamp Museum

United States, China, Worldwide - Stamps and Covers

Unique Estate Appraisals

U.S. and Worldwide Stamps & Supplies

Universal Philatelic Service

Topical and Worldwide Sets and Souvenir Sheets, Packets, Collections, Lots and Wholesale Dealer Stock

University Stamp Shop

United States and Worldwide Stamps and Covers

Village Hobby

U.S., Canada

Washington Stamp Co.

China, France

Williams Stamps

British Colonies

tive April 1, 1954, the day the new Wildlife stamps were to be issued.

The local letter and the postcard rates were raised from 3¢ to 4¢, and the domestic letter rate went from 4¢ to 5¢.

With the rate change, the Post Office Department also took the opportunity to transfer the Beaver design to the domestic letter rate. They asked Hahn to do some rough sketches showing only the denomination in detail.

He made two tracings, labeled A and B, along with a blow-up of tracing A (Figure 10). Of the three tracings, only tracing B is dated: Dec. 11, 1953.

On the same day, CBN superimposed a new 5¢ value tablet on an existing 3¢ black die proof and sent it for approval (Figure 11).

Miles returned the die proof December 14, suggesting that, "the denomination '5' be substituted for that supplied by artist marked 'tracing A.'" This was done, again by adding only the value tablet, and Miles approved the design on December 16 subject to, "the background of 5¢ matching that on original 3¢ model (proof)" (Figure 12).

At this point the color was changed and a new die proof in blue was prepared and submitted for approval to Turnbull who did so on December 28 (Figure 13).

From that point on, CBN continued working on the production of the stamp. On Jan. 15, 1954, Miles approved the booklet tabs, and on January 26 he approved the plate proof sheet of which a partial pane of 50 is in the Canadian Postal Archives (Figure 14). The plate proofs were printed in an ultramarine blue while the stamps themselves were printed in a somewhat lighter blue.

Hahn was such a famous artist in his time that the Post Office Department let him put the initial of his surname "H" on most of the designs he prepared. On the Beaver it is found in the lower left corner. In addition, Hahn was well known in the philatelic community, and stamps or covers bearing his autograph are frequently offered for sale. He usually signed his name on the selva of stamps but sometimes the signature is found on the stamp itself. ■

Interested in becoming an online dealer? Contact us at
1-866-501-6063 or sales@zillionsofstamps.com

<http://www.zillionsofstamps.com>