

# THE MAKING OF Reflections of Canada: The National Stamp Collection

CHARLES J.G. VERGE

The postage stamps of any nation represent the history and heritage of its people. Canada recently made it possible for everyone to view and admire that history by creating "Reflections of Canada: The National Stamp Collection" (Figure 1), a public display of all Canada and British North America stamps, now open at the Canadian Postal Museum. The museum is situated near Ottawa, in Gatineau, Quebec.

The realization of this remarkable permanent exhibit, which is one that many American philatelists can only dream of, was made possible through the cooperation of Canada Post, the National Archives, the Canadian Museum of Civilization and the Royal Philatelic Society of Canada.

Being president or a board member of the RPSC means you lobby for philately and philatelists on a regular basis. Some of those efforts take years to show results; however, they are worth waiting for when they do.

Ralph Mitchener, a director of the society and its historian for many years, had taken up the cudgel when the Canadian Postal Museum was closed in 1988. He constantly wrote, pushing for its reopening, and was adamant that any recreated postal museum should emphasize stamps.

Other members of past boards and the current board took every opportunity to support this request. The Canadian Postal Museum reopened in 1997 at the Canadian Museum of Civilization in Gatineau, but there were few stamps displayed, since they were housed at the Canadian Postal Archives. Many of the more than 250,000 visitors who



Figure 1. The new "Reflections of Canada" national stamp exhibition opened July 1, 2002, in Quebec. A colorful bookmark given visitors includes additional details on the reverse, such as a list of important web site addresses where visitors can get more information.

passed through the doors of the Canadian Postal Museum every year asked why they could not see all the stamps of Canada on display.

In 1998, Sheila Copps, the minister of Canadian Heritage, set up the English Commission to look into possible integration of the National Archives and the National Library. The RPSC took the opportunity to present a brief on the Canadian Postal Archives to the Commission.

In addition, past president Jim Kraemer and I (as current RPSC president) were asked to make a verbal presentation. We did not harbor much hope, but to our surprise the commission's president, John English, took a personal interest in our brief and made recommendations to the minister that were beyond our wildest dreams. This, coupled with the appointment of André Ouellet as chairman of the board of Canada Post

(Figure 2), was the catalyst to bring down the roadblocks.

As chairman, and later as president and chief executive officer of Canada Post, Ouellet was instrumental in ensuring these recommendations were acted upon.

From that point on things began to improve, and enhanced cooperation was evident between Canada Post, the National Archives and the Canadian Museum of Civilization.

One of the projects resulting from this new-found cooperation was the display of all Canada and BNA stamps at the Canadian Postal Museum. As part of the 150th anniversary celebrations of the independent Canadian Post Office in 2001, Canada Post decided that arranging for the display of Canada's national collection of postage stamps was a priority. The completion of this national heritage treasure project was felt by Canada Post to be a fitting gift to the people of Canada at the close of the 150th anniversary celebrations.

On July 1 of this year Canadian prime minister Jean Chrétien unveiled "Reflections of Canada: The National Stamp Collection" (Figure 3). For the first time in many a year, Canadians can view and enjoy all the stamps of Canada and the provinces set up in a special room. It is a spectacular display of our postage stamp heritage.

I had the honor of facilitating the work of the team that put the exhibition together. Here is how the project came about.

## WHAT IS 'REFLECTIONS OF CANADA'?

"Reflections of Canada" is a project initiated, produced and led by Canada Post to provide Canada's philatelists, the general public and museum patrons with the opportunity to view Canada's national postage stamp her-



Figure 2. André Ouellet, president and chief executive officer of Canada Post Corporation, insisted that a national exhibit of Canada's stamps should be created for public display.



Figure 3. The author, Charles J.G. Verge (left), gives the prime minister of Canada, Jean Chrétien (right) a tour of Canada's national stamp collection on display. Chrétien officially opened the "Reflections of Canada" stamp exhibition on July 1, 2002.

itage. Although the exhibition is a cooperative project, credit must be given to André Ouellet for his determination to get this project done and his insistence that, this time, there were to be no barriers to its completion.

A similar display, mounted with a philatelic approach, was available prior to 1988 when

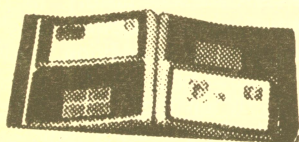
## HOW TO COLLECT RARE STAMPS FOR PLEASURE AND PROFIT...

### JOIN AMERICA'S #1 COLLECTOR/INVESTOR PROGRAM.



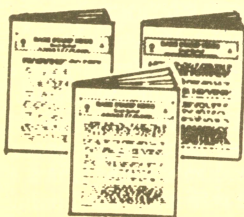
**SPECIAL OFFER TO NEW MEMBERS! JOIN NOW AND RECEIVE OVER \$45.00 IN FREE GIFTS!**

#### FREE GIFT #1



Deluxe Display Album to hold your stamp collection. \$15.00 value.

#### FREE GIFT #3



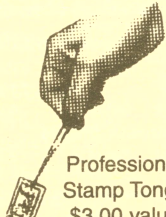
Subscription to "Rare Stamp News" \$9.00 value

#### FREE GIFT #4



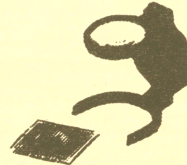
268 Page Catalog of Current Stamp Prices. \$17.95 value.

#### FREE GIFT #2



Professional Stamp Tongs \$3.00 value

#### FREE GIFT #5



Magnifying Glass. \$3.25 value.

Now, by investing as little as \$25.00 each month you can begin a valuable portfolio of rare U.S. stamps chosen especially for you by our highly experienced staff of stamp experts. And the profit potential is proven. During the past 25 years rare stamps have far out-paced most other investments. In fact, an investment in a selected group of rare stamps would now be worth several times the original amount paid. All Stamps Mint F-VF Never Hinged or Better.

**JOSEPH KARDWELL, INC., P.O. BOX 33, MATTITUCK, NY 11952**

Yes, I want to join the JKI Rare Stamp Collector/Investor Program indicated below. Please send my first selection along with my 5 free gifts. I understand that I may cancel my membership at any time.

SM09/02

#### Each month I would like to invest:

☐ \$25.00 ☐ \$50.00 ☐ \$75.00 ☐ \$100.00 ☐ \$250.00 ☐ \$500.00  
☐ Check for initial purchase enclosed \$\_\_\_\_\_ N.Y.S. residents add sales tax.  
 You will be billed for each future selection.

Name \_\_\_\_\_  
 Address \_\_\_\_\_  
 City \_\_\_\_\_  
 State/Zip \_\_\_\_\_  
 Phone number \_\_\_\_\_  
 Signature \_\_\_\_\_

#### CHARGE MY:

☐ American Express ☐ MasterCard  
☐ Visa ☐ Diner's Club  
☐ Carte Blanche ☐ Discover

Card # \_\_\_\_\_  
 Expiration date \_\_\_\_\_

Telephone 800-233-0828 • JOIN BY FAX 631-323-3904

**SATISFACTION GUARANTEED OR YOUR MONEY BACK**



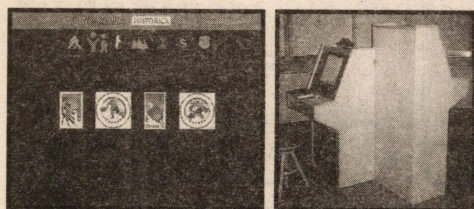


Figure 4. Computer desks housing the Historica's "Heritage Minutes" and a CD-ROM version of the Canadian Postal Archives web site. The taller desk was eventually reduced in size to match its partner, and they were placed side by side. At left is a computer screen showing the Sports stamps that have "Heritage Minutes" attached to them. For example, with a click on the basketball stamp at left the visitor sees a one-minute film on the invention of the sport by Canadian James Naismith.

there existed a postal museum owned and operated by Canada Post. In 1988 the museum was closed and the stamps and paper items were sent to the National Archives of Canada for safekeeping. The three-dimensional

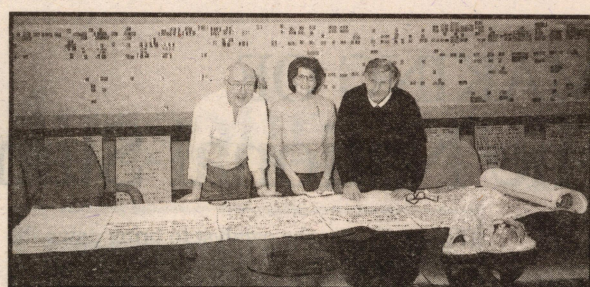


Figure 5. From left to right: Charles Verge, Rachel Touchette and Father Jacques Monet, looking at their first thematic iteration of all the stamps of Canada, with a second one in the background. The design of the working model at right was based on data taken from the preliminary layouts, which was then entered into a database and used to form the computerized model.

objects were sent to the Canadian Museum of Civilization.

A new Canadian Postal Museum was opened in 1997 on the premises of the Museum of Civilization. It could only display the artifacts it had, but from time to time stamps were borrowed from the National Archives of Canada. This was not an ideal situation, as the borrowing process is arduous and borrowed stamps cannot be displayed for more than six months in any five-year period.

#### THE CONTENTS OF THE DISPLAY

All stamps of Canada and the provinces that issued stamps prior to Confederation are on display. The provinces and the approximate number of stamps they issued are as follows.

- British Columbia and Vancouver Island, 18 (joined Confederation in 1871);
- Province of Canada, 20 (joined in 1867);
- New Brunswick, 11 (joined in 1867);
- Nova Scotia, 13 (joined in 1867);
- Prince Edward Island, 16 (joined in 1873);

Newfoundland, 297 (joined in 1949);  
Canada since Confederation, circa 2,050.

Of these 2,425 stamps issued since 1851, more than 2,300 are on display in "Reflections of Canada."

The remaining 125 are not displayed because they bear the same vignette or have the same color or denomination as those on display, except that they have been issued in a different format, such as in a booklet format where the stamp may have three perforated edges and one straight edge, while its sheet stamp equivalent has four perforated edges. In such cases, where the difference is so minimal, it was decided not to display both.

Canada Post, the Canadian Postal Museum, the Canadian Postal Archives of Canada and the Royal Philatelic Society of Canada provided the stamps required to complete the display.

#### THE LAYOUT OF THE DISPLAY

The stamps are displayed in two segments. The first, on a charcoal gray background, are shown the stamps of the provinces prior to Confederation, in a chronological fashion. The second, on a black background, shows all post-Confederation Canadian stamps in chronological order, but through a thematic approach.

The thematic approach was chosen to make the display more interesting for the visitor. The eight themes chosen to display the stamps follow, with a brief list of the subthemes within each. They are listed as they appear on the panels. From top to bottom they are,

**Philately:** The postal service and stamps with no definable themes.

**History:** Canadian history, Canadian participation in the world and historical personalities (incl. Prime Ministers).

**Culture:** Arts, culture, literature, architecture, etc.

**Symbols:** Royalty, the beaver, the maple leaf, the Canadian flag, Parliament, the Office of governor-general, etc.

**Society:** Education, medicine, social affairs, justice, feasts and festivals, Christmas, etc.

**Economy:** Natural resources, industry, trade, commerce and communications.

**Environment:** Flora, fauna, landscapes and tourist attractions.

**Sports:** Sports and leisure.

It should be noted that if one starts at the bottom of the display, the order of themes presented is designed to appeal to the interests of children and young people, and are therefore placed more at the level of a young person's physical height as they would view the stamp exhibit. For the benefit of the philatelist, the stamps are differentiated between definitive and commemorative stamps by the means of a small triangle identifying the definitive stamps.

Definitive stamps are those that have continuous printing and are available for extended periods. Commemorative stamps are those that have a defined print run and are on sale for a limited time.

A small square that looks like a television screen identifies some 80 stamps: these stamps all relate in some way to a "Heritage Minute." Sixty of Historica's 66 "Heritage Minutes" have themes that can be illustrated by Canadian stamps.

Historica is a nonprofit heritage organization that promotes Canadian history. Its 66 "Heritage Minutes" can be viewed on the Internet at [www.historica.ca](http://www.historica.ca). In addition, its site is home to the Canadian Encyclopedia, where you can find almost anything you wish to know about Canada, its people, government, industry, history and more.

#### COMPUTER STATIONS

There are two computer stations in the display hall (Figure 4). One allows people to view the 60 Heritage Minutes related to the identified stamps. The other gives access to the Canadian Postal Archives database of information on Canadian stamps. It is a CD-ROM version of the web site found online at [www.archives.ca](http://www.archives.ca).

Visitors are able to find out, for any given stamp on display, information about the designer, the printer, the number of stamps printed or issued, a short description of the

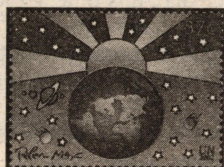
#### WYOMING

2001  
Artist: Brent Todd  
18 \$10 White-tailed deer, 2001 19.00 5.00

#### COMMEMORATIVE PANELS

2001  
CP648 Greetings from America, #3610a 40.00  
CP649 Longleaf Pine Forest, #3611 30.00  
Nos. CP648 and CP649 each consist of 2 pages. One has text and engraved illustrations. The other contains the pane of stamps.

#### UNITED NATIONS



World Summit on Sustainable Development, Johannesburg — A337

Printed by The House of Questa, UK. Designed by Peter Max, US. Designs: No. 828, Sun, Earth, planets, stars. No. 829, Three women. No. 830, Sailboat. No. 831, Three faceless people.

2002, June 27 Litho. Perf. 14½x14  
828 A337 37c multicolored (1,350,000)+ .75 .35  
First day cover 1.25  
829 A337 37c multicolored (1,350,000)+ .75 .35  
First day cover 1.25  
830 A337 60c multicolored (1,350,000)+ 1.25 .60  
First day cover 2.00  
831 A337 60c multicolored (1,350,000)+ 1.25 .60  
a. Vert. strip or block of four, #828-831 4.00 1.90  
First day cover, #828, 831 2.00  
First day cover, #828-831 2.25  
Pane of 12, 3 each #828-831 12.00 4.50  
See Offices in Geneva Nos. 396-399; Vienna Nos. 318-321.

#### OFFICES IN GENEVA, SWITZERLAND

World Summit on Sustainable Development (Peter Max) Type  
Designs: No. 396, Sun, birds, flowers, heart. No. 397, Three faceless people, diff. No. 398, Three women, diff. No. 399, Sailboat, mountain.

2002, June 27 Litho. Perf. 14½x14  
396 A337 90c multicolored (1,215,000)+ 1.25 .60  
First day cover 1.90  
397 A337 90c multicolored (1,215,000)+ 1.25 .60  
First day cover 1.90  
398 A337 1.80fr multicolored (1,215,000)+ 2.40 1.25  
First day cover 3.50  
399 A337 1.80fr multicolored (1,215,000)+ 2.40 1.25  
a. Vert. strip or block of four, #396-399 7.50 3.75  
First day cover, #397, 399 3.50  
First day cover, #396-399 8.00  
Pane of 12, 3 each #396-399 22.50

#### OFFICES IN VIENNA, AUSTRIA

World Summit on Sustainable Development (Peter Max) Type  
Designs: No. 318, Rainbow. No. 319, Three women, diff. No. 320, Three faceless people. No. 321, Birds, wave.

2002, June 27 Litho. Perf. 14½x14  
318 A337 51c multicolored (1,305,000)+ 1.00 .50  
First day cover 1.50  
319 A337 51c multicolored (1,305,000)+ 1.00 .50  
First day cover 1.50  
320 A337 58c multicolored (1,305,000)+ 1.10 .55  
First day cover 1.60  
321 A337 58c multicolored (1,305,000)+ 1.10 .55  
a. Vert. strip or block of four, #318-321 4.25 2.10  
First day cover, #319, 321 1.60  
First day cover, #318-321 3.75  
Pane of 12, 3 each #318-321 13.00

#### ANDORRA

(French Administration)



World Day for Water — A315

2002, Mar. 22 Litho. Perf. 13  
558 A315 67c multi 1.25 1.25

#### ANGUILLA



Social Security Board, 20th Anniv. — A160

Social Security: 30c, Community service, vert. 75c, Benefits all ages, vert. \$2.50, Benefits employees.

2002 Litho. Perf. 13½  
1070-1072 A160 Set of 3 2.75 2.75

#### ANTIGUA



Christmas — A434

Paintings: 25c, Madonna and Child with Angels, by Filippo Lippi. 45c, Madonna of Corneto Tarquinia, by Lippi. 50c, Madonna and Child, by Domenico Ghirlandaio. 75c, Madonna and Child, by Lippi. \$4, Madonna Delceppo, by Lippi. \$6, Madonna Enthroned with Angels and Saints, by Lippi.

2001, Dec. 4 Litho. Perf. 14  
2526-2530 A434 Set of 5 4.50 4.50  
Souvenir Sheet  
2531 A434 \$6 multi 4.50 4.50



2002 World Cup Soccer Championships, Japan and Korea — A435

No. 2532, \$1.50: a, Scene from final game, 1950. b, Ferenc Puskas, 1954. c, Raymond Kopa, 1958. d, Mauro, 1962. e, Gordon Banks, 1966. f, Pelé, 1970.  
No. 2533, \$1.50: a, Daniel Passarella, 1978. b, Karl-Heinz Rummenigge, 1982. c, World Cup trophy, 1986. d, Diego Maradona, 1990. e, Roger Milla, 1994. f, Zinedine Zidane, 1998.  
No. 2534, \$6, Head from Jules Rimet Cup, 1930. No. 2535, \$6, Head and globe from World Cup trophy, 2002.

2001, Dec. 17 Perf. 13½x14½  
Sheets of 6, #a-f 13.50 13.50

2532-2533 A435 Set of 2 13.50 13.50

Souvenir Sheets  
Perf. 14½

2534-2535 A435 Set of 2 9.00 9.00

Queen Mother Type of 2000 Redrawn

No. 2536: a, As child. b, In 1940. c, With Princess Anne, 1951. d, In Canada, 1989. \$6, Inspecting the troops.

2001, Dec. Perf. 14  
Yellow Orange Frames

2536 A404 \$2 Sheet of 4, #a-d, + label 6.00 6.00

Souvenir Sheet  
Perf. 13½

2537 A404 \$6 multi 4.50 4.50

Queen Mother's 101st birthday. No. 2537 contains one 38x51mm stamp with a darker appearance than that found on No. 2374. Sheet margins of Nos. 2536-2537 lack embossing and gold arms found on Nos. 2373-2374.



US Civil War — A436

No. 2538: a, Battle of Nashville. b, Battle of Atlanta. c, Battle of Spotsylvania. d, Battle of the Wilderness. e, Battle of Chickamauga Creek. f, Battle of Gettysburg. g, Battle of Chancellorsville. h, Battle of Fredericksburg. i, Battle of Antietam. j, Second Battle of Bull Run. k, Battle of Five Forks. l, Seven Days' Battle. m, Battle of Bull Run. n, Battle of Shiloh. o, Battle of Seven Pines. p, Battle of Fort Sumter. q, Battle of Chattanooga. r, Surrender at Appomattox.

No. 2539, vert.: a, Gen. Ulysses S. Grant. b, Pres. Abraham Lincoln. c, Confederate Pres. Jefferson Davis. d, Gen. Robert E. Lee. e, Gen. George A. Custer. f, Adm. Andrew Hull Foote. g, General Thomas "Stonewall" Jackson. h, Gen. J.E.B. Stuart. i, Gen. George G. Meade. j, Gen. Philip H. Sheridan. k, Gen. James Longstreet. l, Gen. John S. Mosby. No. 2540, \$6, Monitor. No. 2541, \$6, Merrimack.

2002, Jan. 28 Perf. 14½  
2538 A436 45c Sheet of 18, #a-r 6.00 6.00  
2539 A436 50c Sheet of 12, #a-l 4.50 4.50

Souvenir Sheets  
Perf. 14½x14½ (#2540), 13½

2540-2541 A436 Set of 2 9.00 9.00

No. 2541 contains one 50x38mm stamp.

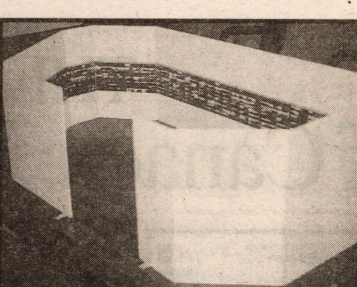
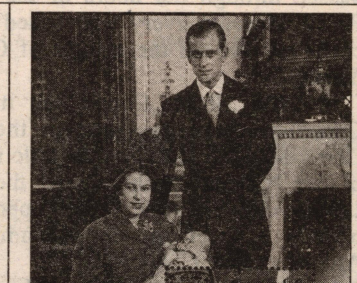


Figure 5. From left to right: Charles Verge, Rachel Touchette and Father Jacques Monet, looking at their first thematic iteration of all the stamps of Canada, with a second one in the background. The design of the working model at right was based on data taken from the preliminary layouts, which was then entered into a database and used to form the computerized model.

#### THE CONTENTS OF THE DISPLAY

All stamps of Canada and the provinces that issued stamps prior to Confederation are on display. The provinces and the approximate number of stamps they issued are as follows.

- British Columbia and Vancouver Island, 18 (joined Confederation in 1871);
- Province of Canada, 20 (joined in 1867);
- New Brunswick, 11 (joined in 1867);
- Nova Scotia, 13 (joined in 1867);
- Prince Edward Island, 16 (joined in 1873);



Reign of Queen Elizabeth II, 50th Anniv. — A437

No. 2542: a, Striped dress. b, Green patterned dress. c, Orange patterned dress. d, White jacket. \$6, Queen with Princess Margaret.

2002, Feb. 6 Perf. 14½  
2542 A437 \$2 Sheet of 4, #a-d 6.00 6.00

Souvenir Sheet  
Perf. 14½

2543 A437 \$6 multi 4.50 4.50

United We Stand — A438



2002, Feb. 11 Perf. 13½x13½  
2544 A438 \$2 multi 1.50 1.50

Printed in sheets of 4.



Designs: 25c, Raising bat. 30c, Receiving gift. 50c, With arms raised. 75c, At bat. \$1.50, Wearing sash, with woman. \$1.80, Standing next to photograph of himself. No. 2551, \$6, Holding sword. No. 2552, \$6, With Antigua color guard.

2002, Mar. 7 Perf. 13½x13½  
2545-2550 A439 Set of 6 4.00 4.00

Souvenir Sheets  
Perf. 13½

2551-2552 A439 Set of 2 9.00 9.00



Designs: 50c, Thick-billed parrot. 75c, Lesser long-nosed bat. \$1.50, Montserrat oriole. \$1.80, Miss Perkin's blue butterfly. No. 2557, 90c: a, Quetzals. b, Two-toed sloth. c, Lovely cotinga. d, Giant hairstrak butterfly. e, Magenta-throated woodstar. f, Bull's-eye silk moth. g, Golden toads. h, Collared peccaries. i, Tamandua anteater. No. 2558, \$1: a, St. Lucia parrot. b, Cuban kite. c, West Indian whistling duck. d, Poey's sulphur butterfly. e, Scarlet ibis. f, Black-capped petrel. g, St. Lucia whiptail. h, Cuban



purpose of the stamp and the history behind the person or event being commemorated.

### EDUCATIONAL TOOL

In addition to displaying Canada's postage stamp heritage, "Reflections of Canada" is an excellent educational tool for all visitors. Father Jacques Monet, Rachel Touchette and I were the three members of Canada's Stamp Advisory Committee charged with conceiving the display's approach (Figure 5). We insisted upon making the experience educational and accessible by using a thematic plan in addition to a chronological outline; displaying the stamps thematically in an appropriate order to interest the visitor notwithstanding his or her height; adding a historical dimension to the display by having 24 brief historical vignettes at the bottom of each panel; and ensuring that visitors (including school groups) could access the Canadian Postal Archives database and the Heritage Minutes.

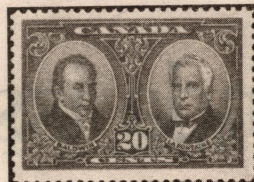
### THE HISTORICAL VIGNETTES

The 24 vignettes taken together tell the story of the growth of Canada's political independence since Responsible Government — an elected assembly accountable only to electors — was first established in 1848. Each vignette is a bilingual short story of an event that promoted the development of Canada's independence over the years and is illustrated with two stamps related to that event.

Some of these events are Confederation, the Great War, the League of Nations, World War II, NATO, the St. Lawrence Seaway, NAFTA and so on.

The educational value of this approach is self-evident; however, the two stamps shown with the vignette contribute an additional dimension. The "Responsible Government" vignette is the first that the visitor encounters, situated below the panel showing the stamps of the pre-Confederation provinces. One of the stamps illustrating this vignette is Canada Scott 148, the 20¢ stamp issued in 1927 for Robert Baldwin and Sir Louis Hypolyte Lafontaine (Figure 6).

This layout allows the teacher or the group leader to send young people on a search for



**Figure 6.** Canada Scott 148, the 20¢ Baldwin-Lafontaine commemorative of 1927, is one of the stamps illustrating "Responsible Government" in the new display.

this stamp in the display, or a regular visitor could even undertake the same type of search.

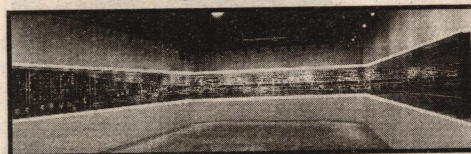
As an aside, the installation of "Responsible Government" is what allowed an independent Canadian Post office, the first postmaster general and the issuance of Canada's first stamps.

### TECHNICAL MATTER

"Reflections of Canada" is displayed in 24 panels and is modeled on a similar display, "Le panorama des timbres-poste de France," prepared by the Musée de La Poste in Paris for the World Philatelic Exhibition, PhilexFrance 99, from a concept by Michel Coste (Figure 7). After the exhibition, the French panorama was transferred to the Musée de La Poste at 34 Vaugirard Blvd., 75015 Paris ([www.laposte.fr/musee](http://www.laposte.fr/musee)).

In Canada 19½ panels are being used at the moment to house the provincial and Canadian stamps issued up to June 30, 2002. That means there is room to show all Canadian stamps until the end of 2010 before something needs to be done to expand the display.

The panels were made at Exposition TGC in Montreal. Georges de Passillé and Pierre-Yves Pelletier conceived the technology and designed the display (Figure 8).



**Figure 7.** Le Panorama des timbres-poste de France, the model on which Canada's "Reflections of Canada" is based, was created in 1999 by the Musée de La Poste in Paris.

The stamps are mounted in archival protectors that are then affixed to magnets and installed on a lightly quadrilled steel backing plate, simplifying the process when new material is added or changes are made to the layout.

The 50-lux low lighting in the room is activated in sections, and only when there are visitors in the exhibition area. This is to protect the stamps on display, as the printed images are susceptible to fading from exposure to light.

The whole project from conception to com-



**Figure 8.** In the Exposition TGC warehouse in Montreal where the panels for the display were made. Pointing to them are company president André Choquet at left, and Georges de Passillé who, with Pierre-Yves Pelletier, conceived technology and designed the display.

pletion took less than seven months, compared with the more-than-two-years it took Coste and the curators in Paris to set up their version. In our case, the time savings was realized because of a complete reliance on computer design, graphics and production; and a determination to complete the project by July 1, Canada's 135th birthday.

If you are ever in Canada's national capital region, I suggest you stop and visit "Reflections of Canada" at the Canadian Postal Museum in the Canadian Museum of Civilization, 100 Laurier Street, Gatineau, Quebec. For museum hours and other details check online at [www.civilization.ca](http://www.civilization.ca).

## U.S. UNUSED FINE

All stamps are sound with fine or better centering and original gum after the year 1980. Before this the stamps will be average to fine and without gum.

Scott #	Price	314 PR	30.00
4	755.00	3190	4.90
7	150.00	3199	7.00
PR	290.00	PR	32.00
24	41.00	320a	50.00
26	17.00	PR	100.00
30	400.00	323	15.00
30A	450.00	324 nh	19.00
37	215.00	325	45.00
38	320.00	326	47.00
63	30.50	328	14.00
65	30.00	329	15.00
68a	180.00	330	50.00
69	130.00	331	2.60
73	49.00	332	2.90
75	890.00	333	15.00
76	210.00	334	17.50
88	140.00	335	20.00
90	800.00	336	23.00
95	260.00	337	18.00
97	590.00	338	27.50
113	145.00	339	25.00
114	80.00	340	31.00
115	259.00	341	150.00
116	290.00	342	325.00
123	140.00	343	3.50
134	325.00	PR	7.00
136	105.00	344	6.00
145	50.00	PR	12.00
146	55.00	350	65.00
147	60.00	352	39.00
151	235.00	353	40.00
152	225.00	LPR	225.00
154	800.00	354	95.00
155	800.00	LPR	500.00
156	60.00	355	90.00
158	19.00	357	75.00
159	100.00	367	3.40
161	170.00	369	140.00
163	320.00	370	5.00
165	240.00	372	5.90
178	90.00	374	4.50
179	115.00	375a	85.00
182	31.00	376	10.00
183	17.00	377	13.75
184	14.00	378	13.75
187	280.00	379	18.00
188	136.00	380	63.50
189	79.00	381	63.00
191 og	1500.00	383	1.75
205	39.00	PR	3.50
206	25.00	385 nh	30.00
207	28.00	LPR	110.00
208a	160.00	386 LPR	195
210	7.00	387	75.00
211	100.00	PR	150.00
212	17.00	LPR	210.00
213	6.50	390 LPR	14.00
214 nh	75.00	396	39.00
215	90.00	397	7.75
216	42.00	398	7.75
217	180.00	399	35.00
219	15.00	400 nh	89.00
219d	99.00	400a	175.00
220	12.00	402	35.00
221	32.00	404	700.00
223	44.00	405	2.50
224	44.00	406	2.25
225	23.00	407	41.00
226	65.00	408	75
227	55.00	PR	1.50
228	100.00	409	1.80
229	190.00	PR	1.80
230	9.50	410	3.85
231	8.00	LPR	18.00
231c	45.00	411	5.00
234	31.00	412	10.00
235	28.00	414	28.00
236	21.00	416	16.75
237	44.00	417	29.00
238	72.00	419	80.00
239	180.00	420	65.00
240	270.00	421	275.00
241	510.00	422	160.00
242	570.00	423 nh	340.00
243	900.00	424d	2.50
243 no	425	1.10	570
gum	750.00	425a	15.00
244	1450.00	426	6.50
245	1500.00	427	18.00
249	55.00	428	15.00
252	50.00	429	25.00
253	40.00	434	16.00
254	60.00	435	16.00
255	40.00	437	80.00
256	85.00	438	98.00
257	56.00	440	475.00
259	120.00	PR	1.00
260	150.00	LPR	4.50
261	490.00	LPR	13.00
261A	1200.00	LPR	75.00
262	1350.00	444	20.00
262 no	gum	447	22.50
263	2200.00	447 nh	32.00
264	2.50	PR nh	64.00
267	1.50	448	5.50
268	17.00	LPR	29.00
272	27.00	452	5.50
273 no	453	75.00	591
gum	20.00	LPR	290.00
274	75.00	454	60.00
275	179.00	PR	120.00
276	299.00	455	5.50
276A	690.00	LPR	34.80
279	3.50	455 nh	7.50
279B	3.25	PR nh	15.00
279Bc	140.00	LPR nh	45.00
279Bd	6.50	458 LPR	130
279Be	275.00	460	575.00
281	16.00	462a nh	11.00
282C	100.00	463 nh	3.00
283	55.00	463a	69.00
284	65.00	464	38.00
285	15.00	465	20.00
286	13.00	466	37.00
288	57.00	467 nh	690.00
289	91.00	468 nh	65.00
290	79.00	469	60.00
291	320.00	470	40.00
292	720.00	472	55.00
293	1100.00	475	125.00
295	8.50	476	160.00
296	48.50	480	230.00
297	43.00	481	65
298	60.00	PR	1.30
299	90.00	482	70
300	5.50	PR	1.40
301	6.50	483	9.00
302	24.00	PR	18.00
303	17.00	486	45
304	22.00	LPR	3.75
305	29.00	LPR	3.75
306	15.00	487	8.00
307	25.00	LPR nh	120.00
311	380.00	488	2.00
312	500.00	489	2.50
313 no	gum	LPR	17.00
314	950.00	490	35
314	15.00	PR	610
490 LPR	2.20	620	3.00
492	5.00	621	16.00
LPR	35.00	622	8.00
493	10.50	623	11.00
PR nh	25.00	627	1.85
494 nh	6.20	628	4.50
495	6.20	629	1.10
496	2.75	630	295.00
497	5.50	630a	12.50
LPR	15.00	632	1.00
LPR nh	32.00	633	1.30
498 nh	30	634d	90
499e	2.00	635	35
500	15	636	2.25
501	7.50	637	1.40
501a	42.00	638	1.40
504	4.25	639	1.40
505 nh	325.00	640	1.40
505	450.00	641	2.50
507	15.00	642	70
509	8.50	643	1.00
511	4.50	644	1.50
512a	5.20	645	8.90
514	23.00	646	70
515	26.00	647	4.50
516	23.00	648	40
517	43.00	649	1.00
518	50.00	650	1.00
519	60.00	651	1.00
524	170.00	652	1.00
524 nh	210.00	653	8.50
525	1.10	654	39.00
529	2.00	655	1.60
529	6.00	656	2.25
530	3.15	657	770
533a PR	30.00	658	1.70
540	5.50	659	3.15
540 ave nh	9.50	660	3.50
541	22.50	661	17.50
541 ave nh	330	662	14.50
542	25	663	25.00
543	69.00	664	8.00
546 se nh	\$49	665	25
547	195.00	666	30.00
548	2.25	667	1.50
549	3.00	668	1.50
550	16.00	669	2.50
551	1.00	670	3.15
552a	5.00	671	1.75
553	1.60	672	2.50
554c	5.90	673	8.00
556	10.00	674	13.00
557	10.00	675	17.50
558	18.00	676	35.00
559	4.00	677	26.00
560	23.50	678	22.00
561	8.00	679	825
561 nh	11.00	680	826
562	16.00	681	827
563	90	682	828
564	3.50	683	829
565	2.70	684	830
566	14.00	685	831
568	12.00	686	832
569	20.00	687	833
570	37.50	688	834
571	28.00	689	835
572	80.00	690	836
573	180.00	691	837
575	6.00	692	838
576	13.00	693	839
576	1.10	694	840
577	1.20	695	841
578	1.50	696	842
579	3.00	697	843
581	6.90	698	844
582	2.50	699	845
583	1.75	700	846
583a ave	35.00	701	847
584	16.00	702	848
585	8.00	703	849
586	11.50	704	850
587	4.00	705	851
588	1.50	706	852
589	6.50	707	853
589A	9.00	708	854
590	12.00	709	855
591	32.00	710	856
592	3.20	711	857
593	6.40	712	858
594	15.00	713	859
595	1.00	714	860
596	1.50	715	861
597	2.00	716	862
598	2.00	717	863
600	2.00	718	864
601	2.00	719	865
602	2.00	720	866
603	2.00	721	867
604	2.00	722	868
605	2.00	723	869
606	2.00	724	870
607	2.00	725	871
608	2.00	726	872
609	2.00	727	873
610	2.00	728	874
611	2.00	729	875
612	2.00	730	876
613	2.00	731	877
614	2.00	732	878
615	2.00	733	879
616	2.00	734	880
617	2.00	735	881
618	2.00	736	882
619	2.00	737	883
620	2.00	738	884
621	2.00	739	885
622	2.00	740	886
623	2.00	741	887
624	2.00	742	888
625	2.00	743	889
626	2.00	744	890
627	2.00	745	891
628	2.00	746	892
629	2.00	747	893
630	2.00	748	894
631	2.00	749	895
632	2.00	750	896
633	2.00	751	897
634	2.00	752	898
635	2.00	753	899
636	2.00	754	900
637	2.00	755	901
638	2.00	756	902
639	2.00	757	903
640	2.00	758	904
641	2.00	759	905
642	2.00	760	906
643	2.00	761	907
644	2.00	762	908
645	2.00	763	909
646	2.00	764	910
647	2.00	765	911
648	2.00	766	912
649	2.00	767	913
650	2.00	768	914
651	2.00	769	915
652	2.00	770	916
653	2.00	771	917
654	2.00	772	918
655	2.00	773	919
656	2.00	774	920
657	2.00	775	921
658	2.00	776	922
659	2.00	777	923
660	2.00	778	924
661	2.00	779	925
662	2.00	780	926
663	2.00	781	927
664	2.00	782	928
665	2.00	783	929
666	2.00	784	930
667	2.00	785	931
668	2.00	786	932
669	2.00	787	933
670	2.00	788	934
671	2.00	789	935
672	2.00	790	936
673	2.00	791	937
674	2.00	792	938
675	2.00	793	939
676	2.		