

New Canada stamp will join past stamps in celebrating Girl Guides' arrival in Canada

CHARLES J.G. VERGE

The year 2010 marks the centenary of the arrival of the Girl Guides movement in Canada. Canada Post will issue a nondenominated (57¢) Permanent stamp July 8 to commemorate this anniversary. Similarly, stamps were issued in 1960 (Scott 389) and 1985 (Scott 1062) on the occasions of the 50th and 75th anniversaries of the Guides (Figure 1).

The first-day cover for the 2010 stamp will be canceled in Guelph, Ontario, to coincide with Guiding Mosaic 2010, a national camp similar to the Boy Scouts Jamboree that will take place at the Guelph Lake Conservation Area July 8-17.

The Girl Guides movement began in Great Britain in 1909, at a Scouting rally at the Crystal Palace in London, when a number of girls faced Lord Robert Baden-Powell (1857-1941), the founder of the Scouting movement, and convinced him to design a program for them. Baden-Powell first asked his sister, Agnes (1858-1945), to lead the group. In 1915, she relinquished the title of president to Princess Mary of Great Britain (1897-1965), daughter of

King George V. In 1918, Agnes relinquished the title of chief guide to Lady Olave Baden-Powell (1889-1977), Lord Robert's wife. Agnes served as vice president of the Guides until her death in 1945.

The first Canadian Girl Guides troop formed in Canada in 1910, in St. Catharines, Ontario. By 1912, troops existed in every Canadian province, and the Canadian Girl Guides Association was formed. An Act of Parliament approved the association's constitution in 1917. As an aside, the first Canadian chief commissioner of the Girl Guides was Lady Mary Pellatt (1858-1924). She held Guide meetings in her home, The Casa Loma, now one of the most visited tourist attractions in Toronto. The Casa Loma is shown on a 65¢ stamp (Scott 1989d, Figure 2), from Canada's 2003 Tourist Attractions booklet.

Canada's first Girl Guides stamp, a 5¢ denomination, was issued April 20, 1960 (Scott 389). Helen Roberta Fitzgerald (Figure 3) designed the stamp, and John Francis Mash engraved the picture and lettering.

Fitzgerald was born in 1919 in Edmonton, Alberta, and was raised in Toronto. She was the first woman commissioned to design a Canadian postage stamp. She attended Humber College and the Ontario College of Art and Design (OCAD), from 1936 to 1945.

At graduation, she was awarded the Governor General's Medal for proficiency. She taught at the OCAD from graduation until she retired in 1980. She worked in oils and watercolors, and was a member of the Embroiders Guild of London, England. She is well-known for her designs for church vestments and altar cloths. She designed eight stamps for Canada between 1959 and 1967, and she was commissioned to submit designs for five other stamps.

Mash was born in London, England, and immigrated to Canada in 1913. He found employment with the Canadian Bank Note Company (CBN) in Ottawa, ending his career as superintendent of the Engraving Division. He engraved eight Canadian stamps between 1955 and 1963.



Figure 1. Canada has issued two stamps to commemorate anniversaries of the Girl Guides movement in Canada: a 5¢ stamp issued in 1960 to honor the 50th anniversary (Scott 389) and a 34¢ stamp issued in 1985 for the 75th anniversary (Scott 1062). A third stamp, a nondenominated (57¢) Permanent stamp, will be issued July 8 for the 100th anniversary.



Figure 2. The Girl Guides met in The Casa Loma, today a popular Canadian tourist attraction and once the home of Lady Mary Pellatt, who served as chief commissioner of the Guides in Canada. The Casa Loma is shown on this 2003 65¢ stamp (Scott 1989d).



Figure 3. Helen Roberta Fitzgerald, designer of the 1960 5¢ Girl Guides stamp. Fitzgerald was the first woman commissioned to design a Canadian postage stamp.

The CBN printed 31,360,000 5¢ Girl Guides stamps in sheets of 400 subjects. These were later divided into post office panes of 100 stamps. They were perforated 12, and there are no known major varieties

This stamp shows how a commissioned design was processed in the middle of the 20th century. Fitzgerald was the only designer asked to submit proposed drawings for the issue. As a first step, she submitted three preliminary essays (Figure 4). All were drawn in colored ink and pencil, and bore the year dates 1910 and 1960, the name of the association and the motto of the Girl Guides: "Be prepared." The wording was in English and in French, as had been the custom with Canadian stamps since 1927.

Once a design was chosen, Fitzgerald was asked to make slight alterations to the design that included a more represen-



Figure 4. The three preliminary designs (essays) proposed by designer Fitzgerald for the 1960 stamp. Postal officials chose the one at top right.



Figure 5. A revised drawing of the accepted design. Fitzgerald created a more representative trefoil and removed the highlight in the numeral "5."

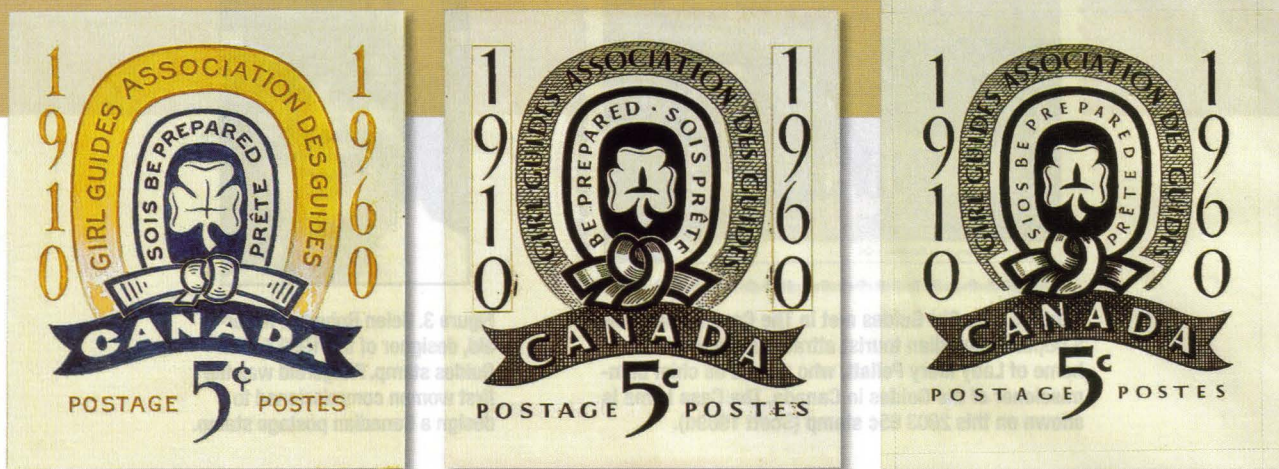


Figure 6. After the design concept was decided upon, Fitzgerald created drawings with more detail. The design at left is a watercolor with gouache and pencil on paper that shows distinct differences from the accepted preliminary design. The second drawing, a collage (center), missing from the production file, likely served as the basis for the third design (right). The third design was the accepted design.

tative trefoil and the removal of the highlight in the numeral "5" (Figure 5).

As a next step, two more detailed drawings were made (Figure 6). The first is a watercolor with gouache and pencil on paper that shows distinct differences from the accepted preliminary design. The second drawing, missing from the production file, likely served as the basis for the

third design. This is a collage where changed year-date fonts are glued onto a photomechanical print of the second drawing, with additional gouache touch-ups.

Once accepted, the collage was redrawn in ink, gouache and pencil on card, and was ready for the engraver. Final approval for the design was received from William Hamilton (1919-89), postmaster general of Canada

(1957-62), February 2, 1960.

The next step was the preparation of the unhardened die and the selection of the correct brown and blue inks. The CBN had a special register to identify colors for Canadian stamps. The CBN selected one brown and two blues for approval (4 brown, and 17 blue and 29 blue). PMG Hamilton approved the use of 29 blue February 17 (Figure 7).

Figure 8 shows four trial color proofs. The one on the left shows the rejected blue color. The three on the right are the approved colors. They are shown because they clearly identify the problem the printers had with registration of the blue color — a problem they were unable to solve. Some stamps show a dramatic shift of the center design from left to right.

The 1985 34¢ Girl Guides 75th

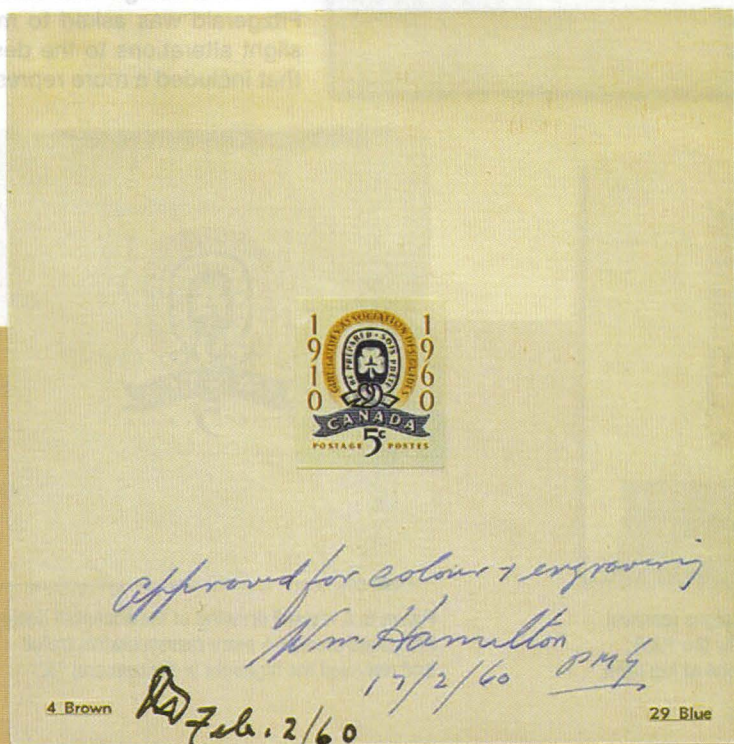


Figure 7. The Canadian Bank Note Co. used a special register to identify colors for Canadian stamps. The CBN submitted one brown and two blues for approval (4 brown, and 17 blue and 29 blue). PMG Hamilton approved the use of 29 blue February 17.



Figure 8. The color proof on the left shows the rejected blue color. The three to the right of this proof are the approved colors. They clearly identify the problem the printers had with registration of the blue color — a problem they were unable to solve.

Anniversary stamp (Scott 1062) was designed by Barbara Griffin, using silk-screen art. The stamp shows a Girl Guide and a Brownie. Griffin is a freelance design artist who studied three years of interior design at the Ryerson Polytechnic Institute, and design at the Ontario College of Art, from which she graduated in 1980. She prepared 11 silk-screen prints of her artwork for her design for the


1985 Girl Guides stamp. These are housed in the Library and Archives Canada in Ottawa, Ontario.

The stamp was printed using photogravure by the British American Bank Note Co. Eighteen million stamps were produced, with tag bars around the four edges of the stamp using General tagging phosphorescent ink. This tagging was introduced in 1973. The taggant is more

noticeable to the naked eye than its predecessors. It glows brightly under ultraviolet light but has no after-glow.

Perforations for this stamp measure 13.3 by 12.9. There are no recorded major varieties for this stamp.

Illustrations of essays and proofs in this article are courtesy of the Library and Archives Canada.



QUALITY UNITED STATES NH

All items are **F/VF OG NH or better**, post office fresh! Coil and imperforate pairs are available for 2x the singles price. (Hinged - Pre-1940 issues are available at 40% OFF these prices).

ASK ABOUT OUR NO INTEREST LAYAWAY PLAN!!

481.....1.75	502.....28.00	535.....18.00	569.....52.00	602.....2.50	634.....40	663.....19.50	693.....6.50	733......60	842......50	1052.....3.75	C41 LP.....11.25
482.....2.25	503.....18.00	536.....40.00	570.....80.00	602 LP.....17.00	634A.....550.00	664.....44.00	694.....2.50	734......65	842 LP.....1.75	1053.....53.00	C46.....4.00
483.....18.00	504.....16.00	537.....16.00	571.....76.00	603.....6.00	634B BP.....2.25	665.....44.00	695.....4.50	735 SS.....9.00	843.....6.00	1075 SS.....1.75	C51a BP.....7.25
484.....15.00	505.....550.00	538.....20.00	572.....145.00	603 LP.....40.00	635......60	666.....144.00	696.....9.75	735a.....1.75	843 LP.....22.00	C1.....99.00	C52.....1.75
486.....1.50	506.....22.00	540.....25.00	573.....200.00	604......60	636.....2.50	667.....21.00	697.....5.50	736-739 ea.....40	844......70	C2.....120.00	C52 LP.....11.50
486 LP.....8.00	507.....52.00	541.....90.00	574.....9.00	604 LP.....5.75	637.....2.50	668.....36.00	698.....10.00	740-749.....11.25	844 LP.....4.00	C3.....120.00	C60a BP.....8.00
487.....21.00	508.....22.00	542.....30.00	576.....2.25	605......60	638.....2.50	669.....50.00	699.....10.50	750-751 SS.....42.00	845.....4.00	C4.....34.00	C61.....3.50
487 LP.....200.00	509.....25.00	543.....1.75	577.....2.25	605 LP.....5.00	639.....2.50	670.....4.75	700.....18.00	750-751a.....5.00	845 LP.....22.00	C5.....120.00	C61 LP.....28.00
488.....5.50	510.....32.00	547.....285.00	578.....152.00	606......60	640.....2.50	671.....4.75	701.....42.00	752......40	846.....1.00	C6.....128.00	C64b I BP.....6.00
488 LP.....72.00	511.....16.00	548.....10.00	579.....140.00	606 LP.....3.75	641.....2.50	672.....19.50	702-701.....105.00	753-755 ea.....60	846 LP.....6.00	C7.....3.75	C64b II BP.....50.00
489.....8.50	512.....16.00	549.....13.00	581.....18.00	610......60	642.....4.00	673.....28.00	702......40	756-765.....11.75	847.....9.00	C8.....4.50	C64b III BP.....10.00
489 LP.....56.00	513.....20.00	550.....85.00	582.....10.00	611.....8.00	632-642.....19.75	674.....26.00	703......50	772-777 ea.....40	847 LP.....34.00	C9.....11.00	C64c III BP.....2.00
490.....1.00	514.....68.00	551......50	583.....5.00	612.....26.00	643.....1.75	675.....60.00	704-715.....25.50	778 SS.....1.75	848......85	C10.....10.75	CE1-2.....1.40
490 LP.....6.00	515.....76.00	552.....2.50	584.....50.00	614.....3.50	644.....4.50	676.....34.00	716......55	782-784 ea.....40	848 LP.....2.25	C10a BP.....104.00	CE1b.....36.00
492.....15.25	516.....70.00	552a BP.....10.00	585.....32.00	615.....7.00	645.....1.25	677.....52.00	717......40	785-794.....3.50	849.....1.00	C11.....8.00	E12.....72.00
492 LP.....92.00	517.....120.00	553.....4.25	586.....32.00	616.....30.00	646.....1.50	678.....56.00	718.....1.50	795-796 ea.....40	849 LP.....4.00	C12.....14.75	E13.....44.00
493.....25.00	518.....96.00	554.....2.50	587.....17.00	617.....3.50	647.....6.00	679.....184.00	719.....2.25	797 SS......60	850.....2.00	C13-15.....1995.00	E14.....3.50
493 LP.....184.00	523.....1100.00	554c BP.....10.00	588.....22.00	618.....6.50	648.....17.50	679-78.....825.00	720......40	798-802 ea.....40	850 LP.....6.00	C16.....7.00	E15-E19.....6.25
494.....18.00	524.....360.00	555.....30.00	589.....48.00	619.....28.00	649.....1.50	680......85	720b BP.....48.00	803-831.....25.50	851.....2.00	C17.....3.50	FA1.....120.00
494 LP.....128.00	525.....5.25	556.....36.00	590.....11.00	620.....6.00	650.....6.00	681......75	721.....3.00	804c BP.....1.75	851 LP.....7.00	C18.....80.00	J88-104.....13.75
495.....17.25	526.....55.00	557.....36.00	591.....100.00	621.....19.50	651......90	682......70	721 LP.....10.00	806b BP.....4.50	839-851.....26.50	C19.....3.00	O127-133.....10.75
495 LP.....130.00	527.....36.00	558.....65.00	597......50	622.....18.00	653.....40	683.....1.35	722.....1.75	807a BP.....7.00	839-851.....112.00	C20.....1.40	O136.....1.00
496.....6.00	528.....18.00	559.....15.00	597 LP.....3.50	623.....20.00	654......80	684......50	722 LP.....6.50	832.....5.75	LP.....112.00	C21.....9.00	O138.....4.25
496 LP.....52.00	528A.....100.00	560.....90.00	598.....1.50	627.....3.75	655......75	685.....1.10	723.....12.00	833.....14.50	852-854 ea.....55	C22.....9.00	O139.....4.25
497.....32.00	528B.....45.00	561.....25.00	598 LP.....8.25	628.....7.75	656.....17.00	686.....2.00	723 LP.....66.00	834.....75.00	855.....1.50	C23......50	O1.....11.50
497 LP.....225.00	529.....7.00	562.....30.00	599......40	629.....2.75	656 LP.....90.00	686 LP.....8.50	724......60	835-838 ea.....45	856-858 ea.....40	C24.....10.00	O2.....15.25
498......75	530.....4.00	563.....2.75	599 LP.....7.00	630 NH.....450.00	657.....1.00	687.....3.25	725......40	839......40	859-893.....26.00	C25-31.....16.00	O3.....30.00
498e BP.....3.50	531.....19.00	564.....10.50	599A.....199.00	630 LH.....350.00	658.....3.50	687 LP.....19.75	726......60	839 LP.....1.25	909-921.....3.00	C25a BP.....4.00	O4.....88.00
499......75	532.....70.00	565.....7.00	600.....10.00	631.....2.25	659.....5.00	688.....1.10	727-729 ea.....40	840......40	948 SS......55	C37.....1.00	Q5.....52.00
499e BP.....5.50	533.....195.00	566.....36.00	600 LP.....6.00	632......40	660.....5.75	689......65	730-731 SS.....40.00	840 LP.....1.25	1311 SS.....40	C37 LP.....8.00	QE1-4.....70.00
500.....480.00	534.....24.00	567.....36.00	601.....36.00	632a BP.....6.50	661.....30.00	690......40	730-731a.....1.25	841......40	1035f BP.....4.00	C39a BP.....8.00	QE4.....36.00
501.....22.00	534A.....80.00	568.....32.00	601 LP.....50.00	633.....2.25	662.....30.00	692......30	732......40	841 LP.....1.50	1036a BP.....2.50	C41.....2.50	QE4a.....30.00

LOTS MORE ON OUR WEBSITE: www.MALACK.com



WE BUY U.S. STAMPS and COINS

STEVE MALACK

P.O. Box 5628 • Endicott, NY 13763

607-862-9441 (Ph/Fax)

steve@malack.com



Terms: Payment with order (Check, MO, VISA, MC or DISCOVER). P&H add \$1.50. 10-day Guarantee!! SAFE for complete U.S. pricelist! VISIT OUR SITE with over 15,000 photos

www.malack.com