



Canada's first postal route, 1763

▼ CHARLES J.G. VERGE

During the French regime in Canada there was no organized postal service. Prior to 1763, letters were exchanged between the different towns, villages and outposts in what was then known as "New France," as well as with the mother country, France. The method of distribution was mainly by favor. Mail was usually carried by travelers, or by vessel captains who were paid a few "sous" — what is called a captain's gratuity.

Though very few internal letters of the peri-

od survive, one 1749 example sent from Quebec City to Montauban, France, is shown in Figure 1. No surviving examples can be attributed to the King's messenger, Pedro da Silva, who was hired at the turn of the 18th century to carry government dispatches and letters between Quebec, Trois Rivières and Montreal. A *chemin du roy* (a "king's way") existed, with relay stations offering lodging and changes of horse and carriage. The keepers of these stations were called postmasters in French — *maîtres de poste* — but they had nothing to do with the postal service as we understand it today. Their only link would have been to house, feed and water the royal messenger and his horse when he stopped at the relay station.



Birds and Flowers
A643

Designs: 20d, Little egret. 50d, White stork. 100d, Bearded vulture. 140d, Orchid, vert. 150d, Dalmatian pelican, vert. 200d, Lily, Plaster Lake. 700d, Egyptian vulture. 850d, Black vulture.

Perf. 13½x13½, 13½x13½

2001, June 27
1993-2000 A643 Set of 8 11.00 11.00

GREENLAND

Queen Margrethe Type of 2000

2001, May 9 Engr. Perf. 13x13½
364 A101 25c blk & bl gray .20 .20
375 A101 12c pur & bl gray 3.00 3.00
Issued, 25c, 12c, 5/9/01.

Cultural Heritage Type of 2000

Designs: 4.50k, Smoked fish. 4.75k, Fishing spear.

2001, May 9 Litho. Perf. 13½x13
384 A102 4.50k multi 1.10 1.10
a. Booklet pane of 6 + 2 labels 6.75
385 A102 4.75k multi 1.10 1.10
a. Booklet pane of 6 + 2 labels 6.75
Booklet, #384a, 385a 13.50



Europa
A104

2001, May 9 Litho. & Engr. Perf. 13
386 A104 15k Krill 3.50 3.50

INDIA

Indepex Asiana Type of 2000

2000, Mar. 31 Litho. Perf. 13x13½
1814a Souvenir sheet, #1811-1814 1.25 1.25

Indepex Asiana Type of 2000

2000, May 24 Litho. Perf. 13½x13
1834b Souvenir sheet, #1831-1834 .55 .55

Gems and Jewelry Type of 2000

2000, Dec. Litho. Perf. 12½
1863a Block of 6, #1858-1863 .80 .80
1863b Souvenir sheet, #1858, 1860-1861, 1863 .70 .70
Issued: No. 1863a, 12/7; No. 1863b, 12/11. No. 1863b sold to 15r.



St. Aloysius College Chapel Paintings, Cent. A1261

Perf. 13½

2001, Jan. 12 Litho. Unwmk.
1870 A1261 15r multi .65 .65



Subhas Chandra Bose
A1262



Dr. B. R. Ambedkar
A1263

2001, Feb. 10
1871 A1262 1r brown .20 .20
1872 A1263 3r blue green .20 .20
Issued: 1r, 1/23; 3r, 4/14.



Famous Men — A1264

Designs: No. 1873, 3r, Sane Guruji (1899-1950), social reformer. No. 1874, 3r, N. G. Ranga (1900-95), politician. No. 1875, 3r, E. M. S. Namboodiripad (1909-98), Marxist leader. No. 1876, 3r, Giani Gurmukh Singh Musafir (1899-1976), politician.

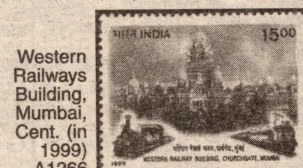
2001, Jan. Litho. Unwmk.
1873-1876 A1264 Set of 4 .50 .50
Issued: No. 1873, 1/25; others, 1/27.



Famous Men — A1265

Designs: No. 1877, 3r, Sheel Bhadra Yajee (1906-96), freedom fighter. No. 1878, 3r, Jubba Sahni (1906-44), revolt leader. No. 1879, 3r, Yogendra (1896-1966) and Baikunth (1907-34) Shukla, freedom fighters.

2001, Jan. Litho.
1877-1879 A1265 Set of 3 .40 .40
Issued: No. 1877, 1/28; others, 1/29.



2001, Feb. 6
1880 A1266 15r multi .65 .65
Dated 1999.



2001 Census — A1267

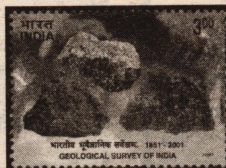
2001, Feb. 10
1881 A1267 3r multi .20 .20



President's International Fleet Review — A1268

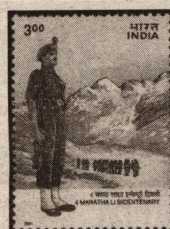
Designs: No. 1882, 3r, Pal. No. 1883, 3r, Galbat. No. 1884, 3r, Tarangini. 15r, Emblem.

2001, Feb. 18
1882-1885 A1268 Set of 4 1.00 1.00



Geological Survey of India, 150th Anniv. A1269

2001, Mar. 4
1886 A1269 3r multi .20 .20



4th Battalion of Maratha Light Infantry, Bicent. — A1270

2001, Mar. 6
1887 A1270 3r multi .20 .20

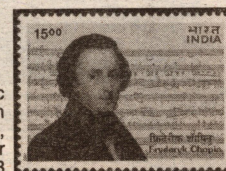


Bhagwan Mahavira, 2600th Anniv. of Birth — A1271

2001, Apr. 6
1888 A1271 3r multi .20 .20

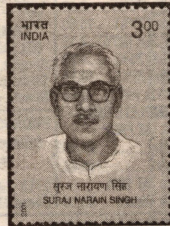


2001, Apr. 12
1889 A1272 15r multi .65 .65



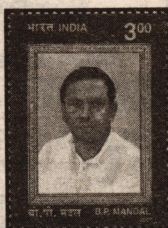
Frederic Chopin (1810-49), Composer A1273

2001, May 4
1890 A1273 15r multi .65 .65



Suraj Narain Singh (1908-73), Politician A1274

2001, May 31
1891 A1274 3r multi .20 .20



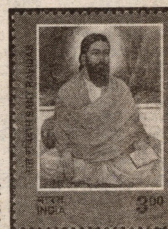
B. P. Mandal (1918-82), Politician A1275

2001, June 1
1892 A1275 3r multi .20 .20



Samanta Chandra Sekhar (1835-1904), Astronomer A1276

2001, June 11
1893 A1276 3r multi .20 .20



Sant Ravidas, 15th Cent Religious Leader — A1277

2001, June 24
1894 A1277 3r multi .20 .20



Chandragupta Maurya, Emperor, 3rd Cent. B.C. — A1279

2001, July 21
1899 A1279 4r multi .20 .20

KENYA



Crops — A144



Figure 1: A letter carried during the French regime in Canada, dated Sept. 14, 1749, and sent from Quebec City to Montauban, France.

After the surrender of Quebec in 1759 (commemorated 200 years later on the 5¢ stamp in Figure 2) and until the Treaty of Paris of 1763, which ceded New France to Great Britain, the colony was under military administration. No postal service was available and government messages were carried by military personnel. During this period, merchants started putting pressure, by petition, on the postmaster general of British North America, Benjamin Franklin (Figure 3), to organize, as soon as possible, a postal service similar to that which existed in other areas of British North America.

Among the Franklin Papers at Yale University is a letter from a G. Todd, writing on behalf of the British postmaster general, enjoining Franklin "to establish a regular post ... for the safe and speedy conveyance of letters." In this March 12, 1763, missive, Todd enclosed a letter from the military governor of Quebec, General Murray, and a memorial from British merchants residing in Canada. The same letter tells Franklin that Hugh Finlay will be sailing to Canada from Glasgow, and that Franklin is to appoint him postmaster at Quebec immediately upon his arrival there. This was done June 10, 1763.

Finlay also had responsibility for all the suboffices north of the United States border and therefore it can be said that he was not only postmaster at Quebec, but also postmas-

Continued on page 70

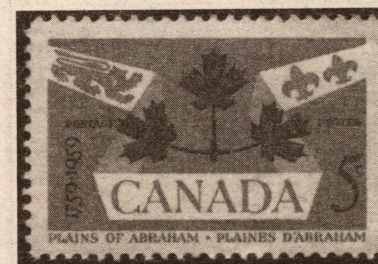


Figure 2: Canada Scott 388 was issued in 1959 for the 200th anniversary of the battle of the Plains of Abraham, the decisive battle that lost the war for France and resulted in the transfer of New France to British control.



Figure 3: On the occasion of the American Bicentennial, Canada issued a 10c stamp that shows Benjamin Franklin along with a map of the first postal route in Canada. The United States issued a 13c stamp with a similar design.

Continued from page 68

ter of Quebec. Some writers indicate that Franklin may have come to Quebec in 1763 to meet with Finlay; others are silent on the subject and no actual proof exists as to whether he did or not. What is known, though, is that by 1765 the post road between Quebec and Montreal had been extended to New York (via

Lake Champlain) once a month, for mail to arrive in time to catch the packets bound for England. The 1767 letter in Figure 4 followed that route as it traveled from Quebec City to London, England.

Finlay had lived in Quebec in 1761-62 and been a merchant. He took the opportunity to learn French, a skill that was to serve him well

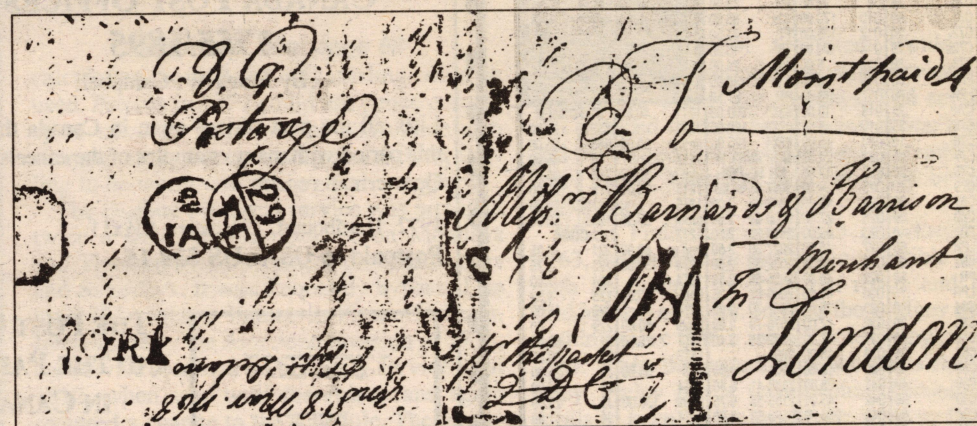


Figure 4: A letter from Canada to Great Britain mailed very early after the start of the postal route linking Quebec to New York via Montreal and Lake Champlain. Dated Dec. 12, 1767, and sent from Quebec City to London, England.

2001, Feb. 28 Photo. Perf. 14½x14

| | | | |
|----------|----------------|------|------|
| 749 A144 | 2sh Cotton | .20 | .20 |
| 750 A144 | 4sh Bananas | .20 | .20 |
| 751 A144 | 5sh Avocado | .20 | .20 |
| 752 A144 | 6sh Cassava | .20 | .20 |
| 753 A144 | 8sh Arrowroot | .20 | .20 |
| 754 A144 | 10sh Papayas | .25 | .25 |
| 755 A144 | 19sh Oranges | .50 | .50 |
| 756 A144 | 20sh Pyrethrum | .50 | .50 |
| 757 A144 | 30sh Peanuts | .75 | .75 |
| 758 A144 | 35sh Coconuts | .90 | .90 |
| 759 A144 | 40sh Sisal | 1.00 | 1.00 |
| 760 A144 | 50sh Cashews | 1.25 | 1.25 |

Size: 25x42mm

Perf. 14½

| | | | |
|----------|---------------------|-------|-------|
| 761 A144 | 60sh Tea | 1.50 | 1.50 |
| 762 A144 | 80sh Corn | 2.10 | 2.10 |
| 763 A144 | 100sh Coffee | 2.60 | 2.60 |
| 764 A144 | 200sh Finger millet | 5.25 | 5.25 |
| 765 A144 | 400sh Sorghum | 10.50 | 10.50 |
| 766 A144 | 500sh Sugar cane | 13.00 | 13.00 |

Nos. 749-766 (18)

MALDIVES ISLANDS



Islam in Maldivian Islands, 848th Anniv. — A403

No. 2544: a, Dharumavantha Rasgefaanu Mosque, b, Plaque of Hukurumiskiyi, c, Learning the Holy Koran, d, Institute of Islamic Studies, e, Center for the Holy Koran, f, Islamic Center.

2001, July 9 Litho. Perf. 13½
2544 A403 10r Sheet of 6, #a-f 10.00 10.00

Souvenir Sheet

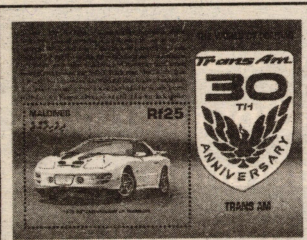
2545 A403 25r Medhu Ziyaarath 4.25 4.25



Fish — A404

Designs: No. 2546, 10r, Pterois miles. No. 2547, 10r, Pomacanthus imperator.

2001, July 16 Perf. 14x14½
2546-2547 A404 Set of 2 3.50 3.50



Pontiac Trans-Am Automobiles — A405

No. 2548, 12r: a, 1970. b, 1989. c, 1994. No. 2549, 12r: a, 1976. b, 1988. c, 1988 Coupe.

2001 Perf. 14

Sheets of 3, #a-c

2548-2549 A405 Set of 2 12.50 12.50

Souvenir Sheet

Perf. 14½

2550 A405 25r 1999 4.25 4.25
Nos. 2548-2549 each contain three 42x28mm stamps.



Automobiles — A406

Designs: 1r, 1930 Pierce-Arrow. 2r, 1938 Mercedes-Benz 540K. 8r, 1934 Duesenberg J. 10r, 1931 Bugatti Royale. No. 2555, 7r: a, 1931 Auburn convertible sedan, b, 1931 Mercedes SSKL, c, 1929 Packard roadster, d, 1940 Chevrolet, e, 1915 Mercer, f, 1941 Packard sedan. No. 2556, 7r: a, 1932 Chevrolet roadster, b, 1929 Cadillac Fleetwood roadster, c, 1928 Bentley Speed Six, d, 1930 Cadillac Fleetwood, e, 1936 Ford convertible, f, 1929 Hudson Phaeton. No. 2557, 25r, 1930 Cord Brougham. No. 2558, 25r, 1931 Rolls-Royce P-1.

2001 Perf. 14

2551-2554 A406 Set of 4 3.50 3.50

Sheets of 6, #a-f

2555-2556 A406 Set of 2 14.50 14.50

Souvenir Sheets

2557-2558 A406 Set of 2 8.50 8.50

MARSHALL ISLANDS

Flower of the Month Type of 2001

2001, July 3 Litho. Perf. 11½

Stamp + label

764 A182 34c Larkspur .70 .70

Issued: No. 764, 7/3. Numbers have been reserved for additional stamps in this set.



Sports — A191

No. 783: a, Basketball. b, Bowling. c, Table tennis. d, Kayaking.

2001, June 26 Litho. Perf. 11½
783 A191 34c Block of 4, #a-d 2.75 2.75

Famous People Type of 2001

Design: 57c, Atlan Anien, legislator.

2001, July 9 Perf. 10½x11½
784 A184 57c multi 1.10 1.10



Zodiac Signs — A192

No. 785: a, Aries. b, Taurus. c, Gemini. d, Cancer. e, Leo. f, Virgo. g, Libra. h, Scorpio. i, Sagittarius. j, Capricorn. k, Aquarius. l, Pisces.

2001, July 17 Perf. 11½
785 A192 34c Sheet of 12, #a-l 8.25 8.25

MAYOTTE



Map of Mayotte — A42

2001, Jan. 1 Litho. Perf. 13
144 A42 2.70fr grn & blk .75 .75
145 A42 (3fr) red & blk .80 .80



Breastfeeding A43

2001, Jan. 27 Perf. 13½x13
146 A43 3fr multi .80 .80



Return of Pilgrims to Mecca A44

2001, Mar. 10 Perf. 13x13½
147 A44 2.70fr multi .70 .70



Bush Taxi — A45

2001, Mar. 10 Perf. 13
148 A45 3fr multi .80 .80



Foreign Legion Detachment in Mayotte, 25th Anniv. — A47

2001, Apr. 30 Litho. Perf. 13
151 A47 5.20fr multi 1.40 1.40

MICRONESIA

Fish Type of 1998

Design: \$12.25, Blue-spotted boxfish.

2001, Mar. 28 Litho. Perf. 14½x14½
429 A116 \$12.25 multi 25.00 25.00



Japanese Art — A150

Designs: No. 430, 34c, Parody of the Allegory of the Sage Chin Kao Riding a Carp, by Suzuki Harunobu. No. 431, 34c, The Courtesan Hinazuru of the Choji-Ya, by Chokosai Eisho. No. 432, 34c, Girl Tying Her Hair Ribbon, by Tori Kiyomine. No. 433, 34c, The Iris Garden, by Kiyonaga Torii. No. 434, 34c, The Courtesan Mayuzumi of the Daimonji-Ya, by Shunsho Katsukawa. No. 435, 34c, Bath House Scene, by Toyokuni Utagawa. No. 436 - Paintings by Utamaro: a, Dance of a Kamisha, b, The Courtesan Hinazura at the Keizetsuro, c, Toilet Scene, d, Applying Lip Rouge, e, Beauty Reading a Letter, f, The Geisha Kamekichi. No. 437, \$2, Allegory of Ariwara No Narihira, by Kikugawa Eizan, horiz. No. 438, \$2, Girl Seated by a Brook, by Harunobu, horiz.

2001, Apr. 20 Perf. 14

430-435 A150 Set of 6 4.25 4.25

436 A150 34c Sheet of 6, #a-f 4.25 4.25

Imperf

Size: 118x88mm

437-438 A150 Set of 2 8.00 8.00

Phila Nippon '01, Japan (Nos. 436-438).



Toulouse-Lautrec Paintings — A151

No. 439: a, Oscar Wilde. b, Doctor Tapie in a Theater Corridor. c, Monsieur Delaporte. \$2, The Clowness Cha-U-Kao.

2001, May 15 Perf. 13½

439 A151 60c Sheet of 3, #a-c 3.75 3.75

Souvenir Sheet

440 A151 \$2 multi 4.00 4.00



Queen Victoria (1819-1901) — A152

later when he had to deal with the *maîtres de poste*. In fact, he sought and received their support almost immediately. He believed they would be the linchpins in the transportation of the mail. Through the 37 years he was a member of the Legislative Council in Quebec, he always made sure that he had the responsibility for the *maîtres de poste*. He treated them fairly and equitably and kept a vigilant eye out so that others would do the same.

His first task was to ensure that their work was properly defined in a fashion similar to that of the "masters of the post house" in Great Britain. This gave them much-needed protection from the vagaries and harassment of the government, as well as from travelers who had, in the past, been known to severely harass the *maîtres de poste*. To offer additional protection to these key individuals, and despite the difficulties caused by Governor Haldimand in this area, Finlay managed to get himself appointed superintendent of the *maîtres de poste*, and his interest in giving a status to the *maîtres de poste* and defending their rights was handsomely paid back in 1775 during the American invasion. All but three of the *maîtres de poste* remained faithful to the British Crown although most of them were French Canadians and easily could have gone to the other side.

Postal rates of the period were excessively complicated and were calculated in pennyweights, pence sterling and pence currency. I will not go into detail, but suffice to say that one pennyweight was equal to three pence sterling, four pennyweights equaled one shilling sterling, or one shilling two pence currency.

The exact rate of postage was calculated on distance and weight. In 1765, the conversion table between sterling and currency was changed, so that one shilling sterling was worth one shilling and four pence. So a single letter between Quebec and Montreal, which cost nine pence to mail between 1763 and 1765, cost one shilling after the change. By 1775, pennyweights disappeared as a way of

Continued on page 72

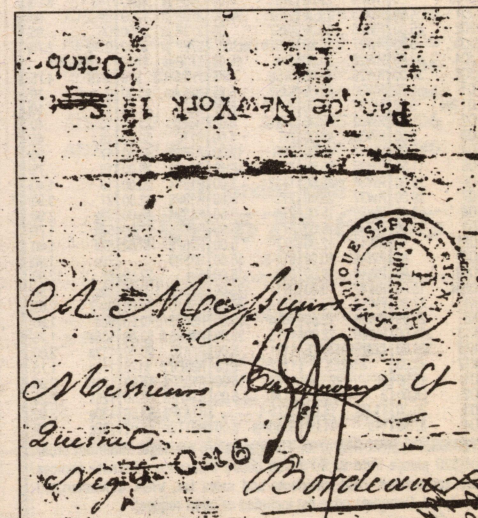


Figure 5: A Sept. 22, 1791, letter from Montreal to France, posted under cover to New York, where it was mailed.



APS
ASDA
NSDA

New Issues Older Issues Mint Used

90-page price list available
upon request

P.O. Box 10025
Bakersfield, CA 93389

Ph/Fax: (661) 834-7135

E-mail: guyshaw@guyshaw.com

Please visit our website: www.guyshaw.com

Various portraits.

2001, May 15 *Perf. 14*
441 A152 60c Sheet of 6, #a-f 7.25 7.25
Souvenir Sheet
Perf. 13%
442 A152 \$2 shown 4.00 4.00
No. 441 contains six 28x42mm stamps.



Queen Elizabeth II, 75th
Birthday — A153

No. 443: a, With necklace and brooch. b, Color photograph. c, As girl. d, As child. e, With dog. f, Facing left.
\$2, Portrait in color.

2001, May 15 *Perf. 14*
443 A153 60c Sheet of 6, #a-f 7.25 7.25
Souvenir Sheet
444 A153 \$2 multi 4.00 4.00



Marine Life — A154

No. 445, 60c, horiz.: a, Striped dolphin. b, Olive Ridley turtle. c, Goldrim tang. d, Blue shark. e, Picasso triggerfish. f, Polkadot grouper.

No. 446, 60c, horiz.: a, Loggerhead turtle. b, Striped marlin. c, Bicolor cherub. d, Clown wrasse. e, Clown triggerfish. f, Japanese tang. No. 447, \$2, Adult and juvenile emperor angelfish. No. 448, \$2, Harlequin tuskfish, horiz.

2001, July 16 *Perf. 14*
Sheets of 6, #a-f 14.50 14.50
Souvenir Sheets
Perf. 13%
447-448 A154 Set of 2 8.00 8.00
Nos. 445-446 each contain six 42x28mm stamps.

MONTSERRAT



100th Test Cricket
Match at Lord's
Ground — A167

Designs: \$1, Alfred Valentine. \$5, George Headley.
\$6, Lord's Ground, horiz.

2000, May 5 *Litho. Perf. 13½x13½*
1000-1001 A167 Set of 2 4.50 4.50
Souvenir Sheet
Perf. 13½x13½

1002 A167 \$6 multi 4.50 4.50



Birds
A172

Designs: \$1, Golden swallow, vert. \$1.15, Crested quail dove. \$1.50, Red-legged thrush. \$5, Ferdinand's flicker, vert.

2001 *Litho. Perf. 13½*
1021-1024 A172 Set of 4 6.50 6.50

NETHERLANDS ANTILLES

Please change No. 955 (illustration A268 in 2002 Catalogue) to No. 945 (illustration A268). The listings below are consistent with this change.



Cats and
Dogs — A270



Ships — A271

Designs: 55c, Persian shaded golden. 75c, Burmese bluepoint. 110c, Beagle and American wirehair. 175c, Golden retriever. 225c, German shepherd. 750c, British shorthair black-silver marble.

2001, Mar. 7 *Litho. Perf. 13x14*
949-954 A270 Set of 6 16.00 16.00

2001, Apr. 26 *Perf. 13x14, 14x13*

Designs: 110c, Z. M. Mars. 275c, Z. M. Alphen. 350c, Z. M. Curaçao, horiz. 500c, Schooner Pioneer, horiz.

955-958 A271 Set of 4 14.00 14.00

SEMI-POSTAL STAMPS



Caribbean Postal
Union, 5th
Anniv. — SP101

Designs: 75c+25c, Pen, emblem. 110c+45c, Emblem. 225c+100c, Globe, emblem.

2001, May 21 *Litho. Perf. 13½x13½*
B347-B349 SP101 Set of 3 6.50 6.50

PALAU

Please delete Nos. 607-608, illustration number A178 (June 2001 Update). These stamps are the same as Nos. 586-587. The listings below are consistent with this change.

Personalities Type of 1999

Designs: 70c, Gen. Douglas MacArthur. 80c, Adm. Chester W. Nimitz. \$12.25, John F. Kennedy.

2001, June 10 *Litho. Perf. 14x14½*
607 A142 70c lilac 1.40 1.40
608 A142 80c green 1.60 1.60
609 A142 \$12.25 red 25.00 25.00
Nos. 607-609 (3) 28.00 28.00

POLAND



End of Holy Year 2000 — A1197

Type C Syncopation (1st stamp #3565): Like Type A Syncopation but with oval hole on shorter sides rather than longer sides.

Perf. 11½x11½ Sync. Type C
2001, Jan. 6 *Litho.*
3565 A1197 A multi .55 .25
Sold for 1z on day of issue.



20th Winter Universiade,
Zakopane — A1198

Perf. 11½x11½ Sync. Type B
2001, Feb. 7
3566 A1198 1z multi .55 .25



Internet
A1199

Perf. 11½x11½ Sync. Type A
2001, Feb. 22
3567 A1199 1z multi .55 .25



World Ski Championships, Lahti,
Finland — A1200

Continued from page 68

calculating the rate and only sterling could be used. Patrons in 1777 could use pence currency to calculate rates but the conversion also changed at the time, causing one shilling sterling to be worth one shilling and one penny.

The Quebec-Montreal service was provided twice a week, leaving Quebec on Mondays and Thursdays and Montreal on Wednesdays and Saturdays. It was frequently bypassed, as the 1791 cover to France in Figure 5 shows. Interrupted by the American invasion of 1775, the service resumed its biweekly service until 1812, when war with the Americans again required a change to the schedule. The governor, Sir George Prevost, wanted a more frequent service. George Herriot, Finlay's replacement, concurred, but indicated to the governor that he had a hard time recruiting messengers. The governor made sure that the

messengers Herriot recruited would be exempt from conscription. A daily service was established, except for Sundays. The service was reduced to five days a week at war's end and the frequency remained the same until the early 1850s, when the mail started to be carried by rail.

When Finlay's service was introduced in 1763, the *chemin du roy* was in a terrible state with no ditches to drain the roads and the bridges full of holes. In fact, the bridges were nothing more than a row of poles lying crosswise. When the waters rose, the poles floated away. Finlay had a terrible time getting the locals to keep up the roads. He went so far as to offer to maintain them himself if given the services of 12 soldiers and £100. With these conditions it is remarkable that the service flourished. It was mainly due to the tenacity of Finlay and his successor, Herriot. **SSM**

Perf. 11½ Sync. Type A

2001, Feb. 23
3568 A1200 1z shown .55 .25
With Inscription "Adam Malysz" in Black
3569 A1200 1z multi .55 .25
As #3569, With Inscription "Mistrzem Swiata" in Red
3570 A1200 1z multi .55 .25
Nos. 3568-3570 (3) 1.65 .75

Country Estates Type of 1997

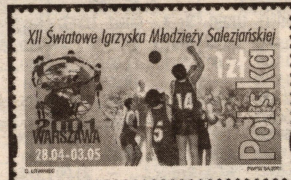
Perf. 11½x11½
2001, Feb. 28 *Photo.*
3572 A1110 1.90z Petrykozy 1.10 .55
3573 A1110 3z Janowiec 1.75 .85
Issued: 1.90z, 3z, 2/28. Numbers have been reserved for additional stamps in this set.



Easter
A1201

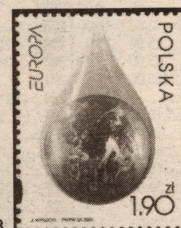
Designs: 1z, Women at empty tomb. 1.90z, Resurrected Christ with apostles.

Perf. 11½ Sync. Type A
2001, Mar. 16 *Litho.*
3575-3576 A1201 Set of 2 1.60 .80



12th Salesian Youth World
Championships — A1202

Perf. 11½x11½ Sync. Type C
2001, Apr. 28
3577 A1202 1z multi .55 .25



Europa — A1203

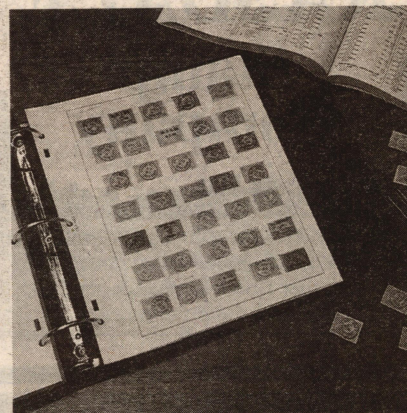
Perf. 11½x11½ Sync. Type A
2001, May 5
3578 A1203 1.90z multi 1.10 .55

RUSSIA



National Cultural Milestones in the
20th Century — A3113

Advantage Stocksheets



The stock sheet with the clear advantage.

Designed with the collector in mind, Advantage stock sheets fit directly in your 2-post or 3-ring National or Speciality album and offer unprecedented durability and flexibility. Choose from 1 to 8 pockets.

Sold in packages of 10

National Border

| Item | | Retail | AA |
|------|-----------|---------|--------|
| AD11 | 1 Pocket | \$12.95 | \$9.06 |
| AD12 | 2 Pockets | \$12.95 | \$9.06 |
| AD13 | 3 Pockets | \$12.95 | \$9.06 |
| AD14 | 4 Pockets | \$12.95 | \$9.06 |
| AD15 | 5 Pockets | \$12.95 | \$9.06 |
| AD16 | 6 Pockets | \$12.95 | \$9.06 |
| AD17 | 7 Pockets | \$12.95 | \$9.06 |
| AD18 | 8 Pockets | \$12.95 | \$9.06 |

Specialty Border

| Item | | Retail | AA |
|------|-----------|---------|--------|
| AD21 | 1 Pocket | \$12.95 | \$9.06 |
| AD22 | 2 Pockets | \$12.95 | \$9.06 |
| AD23 | 3 Pockets | \$12.95 | \$9.06 |
| AD24 | 4 Pockets | \$12.95 | \$9.06 |
| AD25 | 5 Pockets | \$12.95 | \$9.06 |
| AD26 | 6 Pockets | \$12.95 | \$9.06 |
| AD27 | 7 Pockets | \$12.95 | \$9.06 |
| AD28 | 8 Pockets | \$12.95 | \$9.06 |

To order call
1-800-572-6885

- AA prices apply to paid subscribers to *Scott Stamp Monthly*, *Linn's Stamp News*, and *Coin World*.
- Prices, terms and product availability subject to change.
- Shipping & Handling:
United States 10% of order total.*
*Minimum charge \$5.00 *Maximum charge \$15.00
Canada 10% of order total.*
*Minimum charge \$10.00 *Maximum charge \$30.00
Foreign orders are shipped via DHL and billed actual freight.
Credit card orders only.

SCOTT

P.O. Box 828 Sidney OH 45365-0828

AMOS
HOBBY PUBLISHING