

Animals, anniversaries, adventure and art

CHARLES J.G. VERGE



Figure 1. Four new Flower definitives were issued in December to meet new postal rates going into effect in January 2006.

Themes of history, nature and art will feature on many of the postage stamps from Canada Post for 2006. The 80th birthday of Queen Elizabeth II will be celebrated on one of the year's first stamp issues, while Canada Post will mark its own silver anniversary near the end of the year with a new commemorative envelope.

Canada will also share a joint issue with the United States, honoring the accomplishments of French navigator and explorer Samuel de Champlain.

Even before the year began, new definitive stamps were issued December 19, 2005, in anticipation of new postal rates that came into effect January 16. The popular Flowers and Canadian Flag series returned with four new flowers and five stamps showing the flag over scenic views of the country.

The 51¢ domestic-rate letter stamp shows the bergamot blossom or scarlet beebalm (*Monarda didyma*), the 89¢ stamp for mail to the United States portrays the yellow lady's slipper orchid (*Cypripedium calceolus*), while the \$1.49 international rate stamp pictures the Himalayan blue poppy (*Meconopsis betonicifolia*).

A new \$1.05 definitive has been added to pay postage for nonstandard and oversize domestic letters up to 100 grams. The pink fairy slipper orchid (*Calypso bulbosa*) is featured on this stamp (Figure 1).

The 51¢ Beebalm stamp is in coil format, while the others are sold in five-stamp booklets.

The five new 51¢ Canadian Flag designs show a winter scene in New Glasgow, Prince Edward Island; the bridge at Bouctouche in New Brunswick; wind turbines at Pincher Creek, Alberta; Lower Fort Garry National Historic Site in Manitoba; and a dogsled team underway in the Yukon's St. Elias range (Figure 2).

Lower Fort Garry was the subject of two earlier stamps in 1938 (Scott 243) and 1985 (Scott 1050).

The five Flag stamps are offered in a booklet of 10 containing two stamps of each design.

On the same day, a pair of \$2 stamps was issued

in the acclaimed high-value animal definitive series. Jorge Peral engraved the \$2 Peregrine Falcon and Sable Island Horse stamps using photographs provided by John and Janet Foster. These new stamps, printed by combination six-color lithography and three-color intaglio, replace the \$2 Polar Bear stamp of 1998, Scott 1698.

Two months earlier, on October 20, two \$1 stamps featuring the Atlantic walrus and the white-tailed deer were issued to replace the \$1 Loon stamp of 1998. These were also engraved by Peral, based on photographs provided by Jack Hollingsworth and James Gritz.

Images of the four new high-value stamps are shown in Figure 3.

Since December 2003, Canada's domestic letter-rate stamp has displayed a photograph of Queen Elizabeth taken by Canadian rock musician Bryan Adams, who is also a successful published photographer. The original 49¢ stamp, Scott 2012, was replaced with a similar 50¢ stamp, Scott 2075, in December 2004.

A new 51¢ special definitive-commemorative stamp celebrating Her Majesty's 80th birthday was scheduled for release January 12 in a booklet of 10 (Figure 4). Like the 2002 and 2003 Queen Elizabeth special issues marking the 50th anniversaries of her accession and coronation, respectively, this 80th birthday stamp will be available throughout the year.

The list of commemoratives for 2006 starts with two stamps debuting January 29 — the first day of the Year of the Dog — for the 10th release in the Lunar New Year series. As usual, there will be a domestic rate stamp in sheets of 25



Figure 2. The Canadian flag flies over five scenes from across Canada. The self-adhesive stamps are sold in booklets of 10.



Figure 3. Two new \$1 stamps showing the Atlantic walrus and the white-tailed deer were issued October 20. Two new \$2 stamps showing the peregrine falcon and Sable Island horse were issued December 19.

and a souvenir sheet of one stamp at the international rate (Figure 5).

On February 16, two stamps will be issued to show Canada's support of its athletes at the Olympic Winter Games in Turin, Italy. The pair of 51¢ stamps, in sheets of 16, will show the sports of team pursuit speed skating and skeleton sled racing (Figure 6).

In March, on the occasion of the 100th anniversary of the Ontario Horticultural Association, four domestic-rate stamps (in booklets of eight) will celebrate the best of Canadian gardens. Canada previously issued five 40¢ Garden stamps in 1991 featuring public gardens from five provinces (Figure 7, Scott 1311-1315).

The second quarter of the year will see the release of a stamp in April intended for mailing birthday cards; the single issue will be available at post offices until it is replaced.

Two stamps celebrating the art of Dorothy Knowles in the Art Canada series will also appear in April. The domestic-rate stamp will be in sheet format, while a souvenir sheet will include both the 51¢ stamp and a single U.S.-rate stamp of different design.

A single domestic-rate stamp in April will celebrate the 100th anniversary of the prominent Canadian publishing firm McClelland & Stewart. The Canadian Labour Congress will also be commemo-

rated on the centenary of its founding.

The 150th anniversary of the Canadian Museum of Civilization, which houses the Canadian Postal Museum, will be honored by a single domestic rate stamp in May. The museum was previously celebrated with the release of an Art Canada stamp (Scott 1241) when it moved in to its new premises in 1989.

On May 28, Canada and the United States will release a joint issue of single domestic-rate stamps to honor the 400th anniversary of the mapping of the eastern seaboard of Canada and the United States by Samuel de Champlain.

A souvenir sheet of four stamps will feature two U.S. stamps with 39¢ values and two Canadian stamps with 51¢ values. In addition, the Canadian stamps will be available separately in panes of 16. The Champlain stamp is a follow-up to the Port-Royal stamp of 2005, Scott 2115, and the Pierre Dugua de Mons stamp of 2004, Scott 2044 (Figure 8).

In June, a single stamp will be placed on sale to mark the 50th anniversary of the Vancouver Aquarium Marine Science Center.

The 100th anniversary of the Atlas of Canada will be celebrated with a stamp in June as well. The first edition of the Atlas was published in 1906. The Internet version was launched in 1994, and can

be accessed at <http://atlas.gc.ca>, as part of the Natural Resources Canada site.

The achievements of the Canadian Forces Snowbirds, Canada's famous air demonstration squadron, will be commemorated by two stamps to be issued June 28, in time for the Canada Day celebrations on July 1. Officially known as the 431 Air Demonstration Squadron, the Snowbirds have flown for more than 117 million spectators since forming in 1978 (Figure 9).

Summer issues include one stamp for the World Lacrosse Championships taking place July 13-22 in London, Ontario. Nineteen teams will participate from 18 countries, including one team from the Iroquois nation.

Men's lacrosse is a fast-moving competition played by two opposing teams of 10 players on a field 110 yards long. Players use a long stick with a netted pocket on one end to move a solid rubber ball into a goal. French settlers in Canada named the game, but it was adapted from a traditional sport developed and passionately enjoyed by Canadian Indians, including the Iroquois, and tribes from the southeast and Great Lakes regions.

Lacrosse is Canada's national summer game and was last honored on a stamp in 1968 (Scott 483, shown in Figure 10).



Figure 4. The Queen Elizabeth 80th birthday commemorative-definitive will be available throughout 2006.



Figure 5. The 2006 Year of the Dog Lunar New Year 51¢ stamp and \$1.49 souvenir sheet.



Figure 6. Canada's 2006 Olympic stamps for the Torino Winter Olympic Games show the sports of skeleton sled racing and speed skating.



Figure 7. These five stamps showing public gardens were issued in 1991. A new set expected in March will highlight different types of gardens.

In July, a single domestic-rate stamp will be issued for mountaineering, on the occasion of the 100th anniversary of the first meeting of the Alpine Club of Canada in Winnipeg. The club is now headquartered at the Canmore Summer Mountaineering Camps.

Four domestic-rate stamps calling attention to the art and sport of duck decoys, and four more for the wine

and cheese industries, will be issued in August.

In September, great Canadian Opera singers will be honored on four stamps that will also celebrate the opening of the Four Seasons Centre for the Performing Arts, the Canadian Opera Company's new home on the corner of Queen Street and University Avenue in Toronto.

The University stamp series, which

began in 2002, has so far commemorated the founding of 12 Canadian universities or colleges. A new issue in September will honor Macdonald College of McGill University on the occasion of its centennial.

Stamp Month in October will begin a series on endangered species. The first issue will consist of four stamps featuring the swift fox, blue racer



Figure 8. The series commemorating French explorations and settlements began in 2004 and continued in 2005. The third stamp in the series will commemorate Samuel de Champlain in a joint issue with the United States.

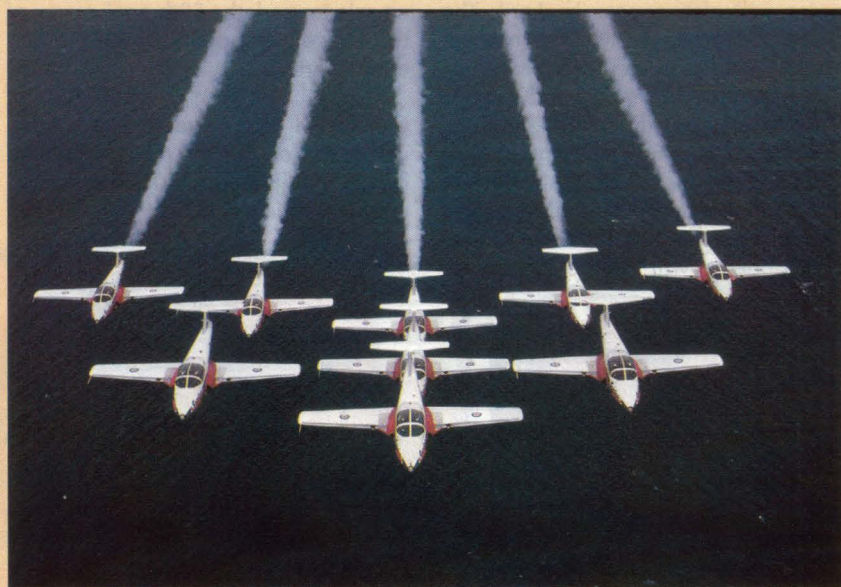


Figure 9. The aerobatic Canadian Forces Snowbirds will be featured on a new stamp in June. Source: Snowbird, image401, http://www.snowbirds.dnd.ca/multimedia/hipics_e.asp, National Defence. Reproduced with the permission of the Minister of Public Works and Government Services, 2005.

snake, tiger salamander, and Newfoundland marten.

October will also see one stamp for the 50th anniversary of the Society of Graphic Designers of Canada (GDC). The GDC is a national professional association that supports excellence in the field of graphic design. Many of Canada's stamp designers belong to this group.

In November, Canada Post has planned four stamps celebrating the Christmas holiday with secular and religious themes. Beginning in 2005, Canada Post initiated a trend that will alternate the two themes from year to year, with three stamps for one and a single stamp for the other.

The 2006 issue will consist of three stamps depicting Christmas Cards at the domestic, U.S. and international rates, and a single domestic-rate stamp portraying the Madonna and Child.

Only one commemorative envelope

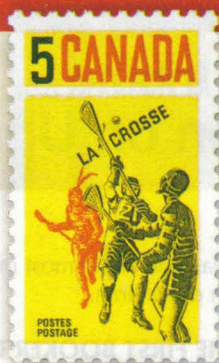


Figure 10. A new commemorative for the sport of lacrosse will be issued in July. The 5c Lacrosse stamp shown here celebrated Canada's national summer game in 1968.

has been announced for 2006, to salute the 25th anniversary of Canada Post's transition from a government entity to a Crown Corporation.

As in past years, there are sure to be more stamps added to the program as the year progresses.

Further information about Canada's new issues will become available online at www.canadapost.ca (look for the link "stamp collecting" under the heading "personal"), or write to National Philatelic Centre, 75 St. Ninian St., Antigonish, NS B2G 2R8, Canada. ■

6 U.S. MNH F-VF SOUVENIR SHEETS



**#778, 797,
948, 1075,
1311 & 1757.**

**ONLY
\$4.00**

We will include our New 85-page U.S. PRICE LIST of mint and used - singles, year sets & plate blocks of commemoratives, definitives, airmails, special delivery & booklet panes. Limit 1 set. (Foreign orders add \$2.00).

R. W. STAMP CO.

P.O. Box 299, Buffalo, MN 55313-0299



UNITED STATES UNUSED FINE

All stamps are sound with perforations clearing the design or better centering, Original Gum and Lightly Hinged after the year 1890. Before 1890 the stamps will be Average to Fine without gum. NH = Never Hinged, OG = Original Gum, NG = No Gum

Sc #	Price	Sc #	Price	Sc #	Price	Sc #	Price
507	15.00	PR NH	11.50	LPR	6.50	PR	3.80
507 NH	25.00	LPR	18.00	687 NH	2.25	LPR	4.00
508	6.00	601	2.00	692	1.50	852-8	1.80
508 NH	13.00	PR	4.00	693 NH	4.00	863	1.50
509	8.50	LPR	12.50	694	1.00	868	1.80
509 NH	12.50	602 LPR NH	9.00	694 NH	1.40	873	1.20
511 NH	9.00	603	1.80	695 NH	2.65	883	4.20
512a	5.20	PR	3.60	696 NH	5.65	888	1.50
512a	10.50	LPR	11.25	697 NH	3.25	893	11.25
514	23.00	603 NH	3.50	698	4.00	899-93	22.00
515	26.00	PR NH	8.00	698 NH	5.75	894-02	1.20
515 NH	45.00	LPR NH	22.50	699	4.25	909-21	1.90
516	23.00	604 LPR	1.70	700 NH	11.25	927-47	2.10
516 NH	29.00	605 LPR	1.50	701	20.00	949-10	6.50
517	30.00	611	7.00	701 NH	26.00	1030-4	1.00
517 NH	60.00	PR	14.00	710	1.00	1038a NH	2.00
518	30.00	612	7.50	711	2.40	1048	1.20
523	375.00	614	1.50	713	2.30	1050	1.70
524	170.00	615	3.00	714	1.40	1051	1.50
524 NH	210.00	616	15.00	715	7.00	1052	5.90
525	1.10	614 NH	3.00	718	1.00	1053	75.00
526	19.00	615 NH	4.50	719	1.40	1054a LPR	1.25
527	10.00	617	1.25	720b NH	39.00	1056 LPR	4.00
527 NH	18.00	618	2.50	721	1.50	1057 LPR	1.40
528 NH	10.00	619	15.00	PR	3.00	1059	1.20
528 Ave. NH	6.50	617 NH	2.25	LPR	4.00	LPR	12.50
528b	16.00	618 NH	4.00	722	1.15	1059a LPR	1.75
537	4.50	619 NH	20.00	PR	2.30	1060-7	1.00
537 NH	9.00	620	3.00	LPR	4.75	1075	2.00
538a	30.00	620 NH	3.75	723	6.50	1075a	2.20
540	6.00	621	7.50	LPR	30.00	1208-99	1.25
540 Ave. NH	9.00	621 NH	12.00	723 NH	8.50	1213a	2.00
541 Ave. NH	30.00	622	6.25	PR NH	41.00	1229 LPR	2.10
542	7.00	622 NH	10.50	730	25.00	1254-5	2.00
546	20.00	623	7.00	731	22.50	1284b	1.15
547	100.00	623 NH	12.00	735	10.00	1297-15	3.00
547 NH	195.00	627	1.40	747	1.30	1341	2.75
548	2.25	628	4.50	748	1.25	1345-5	2.25
548 NH	5.50	629	1.10	749	2.50	1365-6	3.20
549	3.00	631	1.10	750	29.00	1376-7	6.40
549 NH	7.00	PR	2.20	750a	2.25	1393a	1.00
550	22.50	633	1.30	751	10.00	1393ae	1.25
550 Ave.		634d NH	1.65	751a	1.00	1395a	1.25
NH	25.00	636	2.25	760	1.70	1395c	1.30
552a	3.75	637	1.40	761	2.30	1395d	1.60
552a NH	6.50	638	1.50	762	1.60	1410-1	1.40
553	1.60	639	1.40	763	1.25	1415-1	2.00
554c	4.50	640	1.40	764	1.90	1510c	1.30
554c NH	7.00	641	1.40	765	3.50	1595c	1.80
556 NH	21.00	642	2.50	768	17.00	1736a	3.00
557	12.25	644	2.00	768a	1.75	1737a	2.40
557 NH	21.25	647	2.50	769	10.00	1742a	3.25
558	17.50	648	8.90	769a	1.10	1819a	3.50
558 NH	50.00	650	4.50	770	25.00	1889a	7.00
560	25.00	656	8.50	770a	2.60	1909	18.00
564	3.25	656 NH	12.00	771	2.10	2122	16.50
565	2.00	LPR NH	50.00	PR	4.20	2419	4.00
565 NH	3.60	658	1.25	778	1.50	2543	4.25
568	12.00	658 NH	2.25	778a-d	1.30	2544	4.50
568 NH	16.75	660	2.50	785-84	2.00		
569	15.00	661	11.25	803-15	2.60		
570	25.00	662	13.50	818	1.40		
570 NH	47.50	662	19.00	823	1.75	C1	40.00
576	1.10	663	7.00	824	1.20	C2	55.00
PR	2.20	664	16.25	826	1.75	C1 NH	66.00
577	1.50	664 NH	25.00	827	1.00	C4	18.00
PR	3.00	665	17.50	828	3.20	C5	55.00
579 Ave. NH	59.00	667	8.00	830	4.90	C6	60.00
581	6.90	667 NH	12.50	831	6.80	C4 NH	24.00
581 NH	10.00	668	15.00	832	6.90	C5 NH	89.00
582	2.50	669	2.00	833	20.00	C6 NH	90.00
582 NH	4.50	669 NH	3.15	840 LPR	1.10	C7	2.00
583	1.50	670	1.75	841 LPR	1.10	C8	2.20
583a	50.00	670 NH	2.50	842 LPR	2.00	C9	6.90
583a NH	90.00	671	1.00	843	6.00	C10	5.00
584	16.00	671 NH	2.50	PR	12.00	C10a	50.00
585	8.00	672 NH	11.80	LPR	18.00	C10a s	15.00
585 NH	16.25	673	12.50	844 LPR	3.90	C11	2.50
587	4.60	673 NH	17.50	845	3.90	C12	6.00
587	6.50	674	10.00	PR	7.80	C16	490.00
589	14.00	674 NH	15.75	LPR	19.00	C17	3.00
589 NH	25.00	675	24.00	846 LPR	4.50	C18	50.00
590 NH	4.50	675 NH	29.00	847	9.00	C19	70.00
591	32.00	677 NH	30.00	PR	18.00	C19 NH	1.50
591 NH	69.00	678	25.00	848 LPR	2.50	C21	6.00
597 LPR	1.00	678 NH	35.00	849 LPR	3.70	C22	6.00
598 LPR	2.25	679	47.50	850	2.25	C20 NH	1.05
599 LPR	1.00	679 NH	65.00	PR	4.50	C21 NH	9.00
600	3.20	686 LPR	4.50	LPR	4.90	C22 NH	9.00
600 NH	5.75	687	1.65	851	1.90	C24	9.00

TERMS: Payment with order please. Five day return privilege. Alternate choices appreciated. Checks, money orders, VISA, MasterCard, American Express, Discover, and full gum U.S. postage at face value accepted for payment. Add \$2.00 for insurance. California residents include 7.75% sales tax. Free pricelist included or upon request.

MARLIN LARSON, INC.

217 Country Garden Lane, San Marcos, CA 92069
Phone (760) 744-1435 • Fax (760) 744-5119

