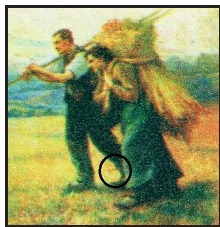


More Varieties on the 50¢ Suzor-Côté, (Scott 492) (Part IV)

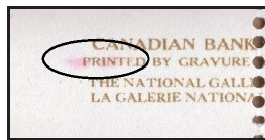
By: Luc Frève

Corgi Times, Volume 18 number 5 (March-April 2010), included a list of varieties known for the Suzor-Côté 50-cent stamp "Return from the Harvest Field" released on March 14, 1969. This previous article listed eight constant flaws plus another one to be confirmed. Since this stamp represents one of my collecting interests. I was wondering if more varieties existed so I began a project to find these and am now sharing with you the results of my research.

In order to proceed with this analysis, I acquired at least two panes of 50 stamps for each of the four panes. I then compared the sheets together to identify any new potential flaws. Finally, I went to Library and Archives Canada in Ottawa and looked for the presence of the potential varieties on the proof sheets. As a result, I was able to locate the position of the "blue scratch between legs" that was waiting to be confirmed since 2010. I also found two major flaws. Few other minor flaws consisting mainly of colored dots were also confirmed. You will find below an illustration of these flaws with their position.



Pane A, pos. 40 - Red arrow located between the legs of the man



Pane C, pos. 5 - Red stroke in the upper right corner inscriptions of philatelic sheets

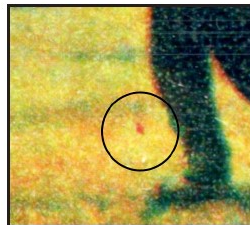


Source: LAC CPA 492-026

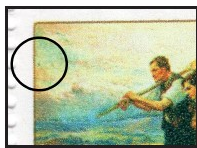
It is interesting to note that this flaw was caught by the Post Office Department (POD) but was not corrected afterward. Was there any communication to the printer? We may never know because the Design and Development file is missing from POD fonds kept by Library and Archives Canada. However, it shows that there was a deficiency in the follow-up made by the POD after a sheet went through quality control!



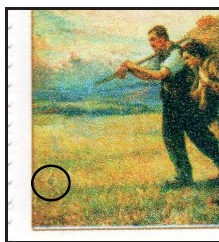
Pane C, pos. 7 - Green dot over frame



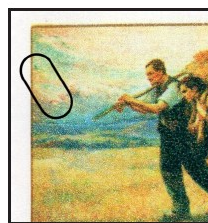
Pane C, pos. 24 - Red dot at knee



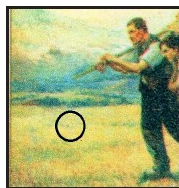
Pane C, pos. 30 - Blue star



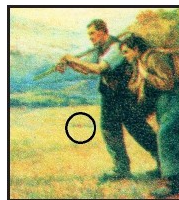
Pane C, pos. 37 - Green spot at lower left



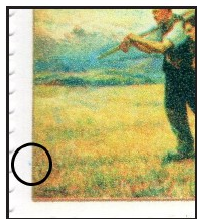
Pane C, pos. 44 - Blue star and red scar in the sky



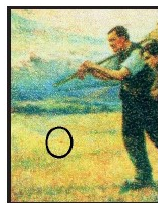
Pane D, pos. 4 - Red flower in the field



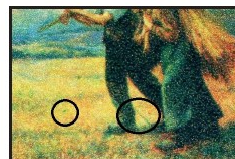
Pane D, pos. 5 - Red flower at the knee



Pane D, pos. 35 - Green dot, left of frame



Pane D, pos. 47 - Another flower in the field



Pane D, pos. 48 - Scratch between legs & green dot in the field

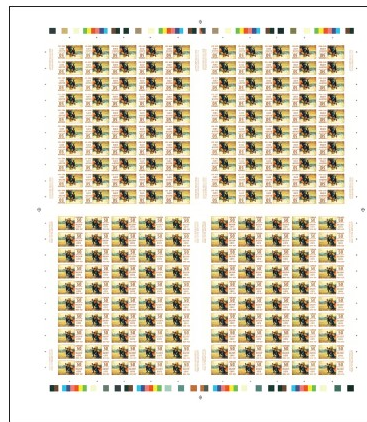
This is the flaw identified in 2010 that needed to be confirmed.

As you may have noted, I did not identify any flaws in Pane B and none were illustrated in the 2010 *Corgi Times* article. Even if I had noted five potential flaws, I was unable to confirm any of them on the proof sheet of Pane B when I visited Library and Archives Canada before the pandemic.

If you want to get the four panes of 50 stamps in your collection, I recommend using the following flaws as an identification tool:

- Pane A: Pos. 1 Blue moon + Pos. 5 Low moon
- Pane C: Pos. 43 Blue spruce
- Pane D: Pos. 41 Line from the knee
- If none of these above flaws are present, you then have Pane B!

Previous parts discussing the 50¢ Suzor-Côté stamp and varieties appeared in the following *Corgi Times*: Nov-Dec 2009, Jan-Feb 2010, Mar-Apr 2010.



50-cent Suzor-Côté press sheet (digital reconstruction as presented in the Nov-Dec 2009 *Corgi Times*).