



MONTREAL CARRIER HANDSTAMPS





Montreal was the first large city in Canada to organise free home delivery on October 1st1874. The home distribution of the mail required a modification of the sorting process from a name-based system for hand to hand distribution at the post office to a street or street section sorting for home delivery. The larger number of carriers needed made it necessary to organise three RECEIVING HOUSES in the West, North and East of the city.

Treatment: This exhibit will cover the three different types of cancels that were used in this new process; first the SORTING cancels related to the timing and dating of that process, secondly the DISTRICT cancels to ensure distribution to the carriers waiting in each district's receiving house and finally the RECEIVING HOUSE cancels for the postal operation proper to each receiving house.





The SORTING cancels (carrier marks), as suggested by J. Houser, could be used to verify the diligence of the letter carrier by putting a time mark on the letters. All the sorting is done in the Head Office; we suppose that only the top letter in each sorting slot received a dispatch/timed SORTING cancel explaining why not all letters received a date stamp. In a spirit of continuity and because they are used in other towns, the Houser types are used to describe these cancels. In Montreal, the type V cancels were used before the type I cancels.

Houser type V		Houser type I	
Small circle cancel with 3 indicia lines: top – distributing run, hour or sorting shift, middle – month, bottom – day		Small circle cancel with 3 indicia lines: top – distributing run, hour or, sorting shift, middle – month day, bottom – year	

The DISTRICT (carrier marks) cancels served another function; after sorting at the central post office they identified the district where the mail should be sent. To explain the lesser number of these cancels in relation to the SORTING carrier marks, we can suppose that only the top letter in each carrier route or even each batch prepared for the Receiving House received a DISTRICT cancel. (X = EAST or NORTH or WEST)

Type 1A		Type 1B		Type 2		Type 3	
Split circle, CARRIER at top, HEAD OFFICE or, X-DIST. at bottom		Split circle, CARRIERS STAMP at top, HEAD OFFICE at bottom		Circular dated stamp, CARRIER at top, X-DIST. at bottom		Circular dated stamp, Blank at top, single letter X at bottom	

The RECEIVING HOUSE hammers were distributed and used in each of them and not at the central office as the two previous hammers. They would be used on mail received at the receiving house: registered letters that could not be dropped in the mail boxes, undeliverable mail returned by the letter carriers and re-entering the postal system or mail handed to the carrier during his route. (X = E or N or W)

Type 1		Type 2A		Type 2B		Type 3	
No rim, MONTREAL at top, X R H without dots at bottom		Split circle (22mm), MONTREAL at top, X.R.H. at bottom		Similar to 2A but 25mm No year in indicia		Circular dated stamp, MONTREAL-N.R. HOUSE at top, dot at bottom	

Development: The exhibit's structure will present a short portion on precursor markings followed by the evolution of each type of cancel (type of usage, indicia used, introduction of sub-types...).

Presentation: Tables and graphics are included to support the results.

Cancels are free strikes on cover, red contour indicates a special item

TABLE OF CONTENT	PAGE
TITLE	1
PRECURSOR MARKINGS	2-3
SORTING CANCELS	4-16
DISTRICT DISPATCH CANCELS	17-32
RECEIVING HOUSE CANCELS	32-48

USED FROM: 1872-03-25 - 1874-09-12

In his articles published in TOPICS, J. Houser has identified seven different "So called carrier cancels" types, based on the placing of the information on three lines. The type V cancel was used on some covers as early as March 1872; almost two and a half years before the beginning of free mail delivery in Montreal on October 1st 1874. All precursor cancels seen by the author, have a 2, 8 or 11 indicia in the upper line, these would be time marks for 8 AM, 11 AM and 2 PM deliveries.

FIRST REPORTED USE IN THE PRECURSOR PERIOD



Split circle cancel BATISCAN-BRIDGE/C.E. MR23/1872, split circle transit cancel ST-STANISLAS/C.E. MR23/72, interior split circle reception cancel MONTREAL/Q AM/MR25/72 and SORTING cancel 11/MAR/25 (Houser type V) for delivery at 11 am.

SORTING CANCEL ON REGISTERED COVER



Registered cover from Sorel to Montreal with SORTING cancel (1 of 2 known registered cover in precursor era); 2c and 3c small queen stamps tied by target cancel, REGISTERED strait line handstamp and free SOREL/C.E. OC 6/73 split circle cancel on front and back stamped with a MONTREAL/C.E. OC 7/73 receiver and a SORTING cancel 11/OCT/7.

EARLIEST STAMPED COVER IN PRECURSOR ERA WITH SORTING CANCEL

Oval grid tying 3c small queen stamp and free W.O. GRAND-AUNCE/N.B. 3/DECB/1872 (manuscript) double split circle cancel on front, back with BATHURST DE5/1872 transit cancel, QUEBEC/QUE. PM/DE 16/72 transit split circle cancel, MONTREAL/Q 8/DE 18/72 receiving interior split circle cancel and SORTING cancel 8/DEC/18 (Houser type V) indicating an 8 am delivery.



NEXT DAY DELIVERY



Letter with a PAID3 handstamp and a free ST-LEONARD/Q 20/Fev (manuscript) split circle cancel on front, back stamped with a MONTREAL/Q 9/FE22/72 reception (at 9PM) double split circle cancel and a Houser type V SORTING cancel 8/FEB/22 for the first next day delivery.

LAST REPORTED USE IN THE PRECURSOR ERA

Double split circle cancel BATISCAN-BRIDGE/C.E. SP11/1874 and PAID 3cts (manuscript) on front and on back a SORTING cancel 8/SEP/12 (Houser type V) used 18 days before the official beginning of free home delivery in Montreal for delivery at 8 am.



MESURING THE SUB-TYPES

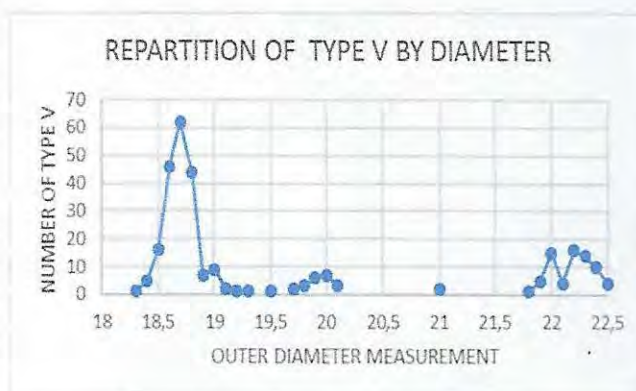
Many type V hammers were used in Montreal; as they have the same structure for the placement of the information, sub-types will be identified based on the diameter of the cancels.

The measuring technique used may influence the result but consistency in the measures is what is most important in this research. The measuring of the external diameter of the cancels to a precision of half a millimeter is difficult in the best of times. To assure some consistency in the measurement, an electronic caliper was used to get a better precision; the measures were rounded up to a tenth of a millimeter to prepare the graphics. The repartition of the measuring of the strikes around a central value can be explained by the over- or under-inking of the hammer, the stretching or shrinking of the paper in the last 140 years.

THE TYPE V SUB-TYPES

From this data; 4 sub-types of the type V can be identified by the diameter of the hammers. As seen in the graphic, they can be described as: 18,7 mm, 20 mm, 21 mm and 22,1 mm in diameter. J. Houser had only the 18 mm sub-type in his status report.

For simplification of notation, these measurements are rounded to identify the sub-types; they will be identified as V-19; V-20, V-21 and V-22. This nomenclature has the advantage that it can be used for all cities having these types of cancels.



PERIODS OF USE OF THE TYPE V HANDSTAMPS

The 4 type V handstamps were used continuously from 1875 to 1886; the V-19 and V-22 handstamps had a concurrent period of use; the V-19 and V-20 handstamps saw limited use during 4 short lived (even single day) revival periods from 1887 to 1891. The precursor handstamps were of the V-20 sub-type.

SUB-TYPE	1 ST PERIODS OF USE		SUB-TYPE	REVIVALS	
V-20	1875-05-04	1875-12-14	V-19	1887-07-20	
V-21	1877-09-03	1877-09-07	V-19	1888-12-23	1888-12-24
V-19	1878-01-03	1886-02-02	V-19	1889-04-09	
V-22	1881-03-18	1882-12-18	V-20	1891-04-25	1891-04-27

TYPE V-20 HANDSTAMP LAST DAY OF USE IN 1ST PERIOD

Manuscript cancel on 1c and 2c small queen on front and 6 cancels on reverse: 3 very partial, a ROBINSON/L.C. DE11/75 split circle, a MONTREAL/QUE. 1/DE14/57 split circle receiver and a SORTING 18/DEC (rotated 180°) /14 cancel. Received at 1PM, the letter was sorted for distribution in the last run of the day at 6PM. (18 is a new time mark indicia not seen in the precursor era)



TYPE V-20 HANDSTAMP USED IN REVIVAL – FIRST DAY OF USE



Postcard mailed at Quebec and cancelled with a QUEBEC/CANADA 4/AP24/91 CDS, a MONTREAL/QUE. 7/APR25/AM split circle receiver and a V-20 SORTING cancel 1/APL/25 for same day first run delivery.

TYPE V-20 HANDSTAMP USED IN REVIVAL – LAST DAY OF USE



Postcard mailed at Halifax and cancelled with a HALIFAX-N.S., CANADA 2/AP24/91 duplex cancel, a MONTREAL, QUE. 11/APR27/PM split circle receiver and 4x V-20 SORTING cancels 1/APL/27, 2/APL27, 4/APL/blank and blank/APL/27. The fact, that as late as 1891, a letter was addressed to Montreal with no street mentioned, explains the complexity of the sorting process. The APL27 date is difficult to explain on the SORTING cancels if the MONTREAL split circle is a receiver as it indicates a reception at 11 PM on the 27th; it must have been applied when the postcard returned to the Post Office when not delivered.

TYPE V-21 HANDSTAMP LAST DAY OF USE IN 1ST PERIOD

Small 1c drop rate cover with a small queen stamp canceled by a MONTREAL/QUE. 7/SP 7/77 split circle cancel and back stamped with a SORTING V-21 2/SEP/7 cancel.



TYPE V-19 HANDSTAMP USED IN 1ST PERIOD

Letter with 3c small queen tied by a segmented cork fancy cancel, a faint free B???TON-FALLS, QUE. AP27/83 split circle, a MONTREAL, QUE. 8/APL28/AM split circle receiver and a SORTING 1/APL/28 V-19 cancel.



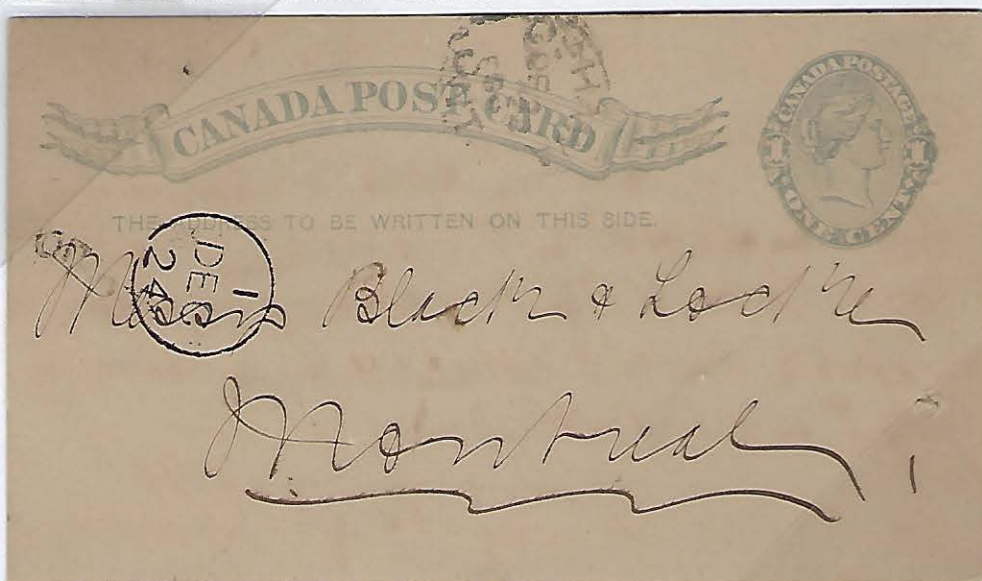
TYPE V-19 HANDSTAMP USED IN 1ST REVIVAL

Postcard mailed to Montreal with PETERBORRO, ONT. PM/JY19/87 inside split circle dispatch, MONTREAL QUE. 9/JUL20/AM split circle receiver and a SORTING 2/JULY/20 V-19 cancel. Received at 9am, it was scheduled for delivery in the second run.



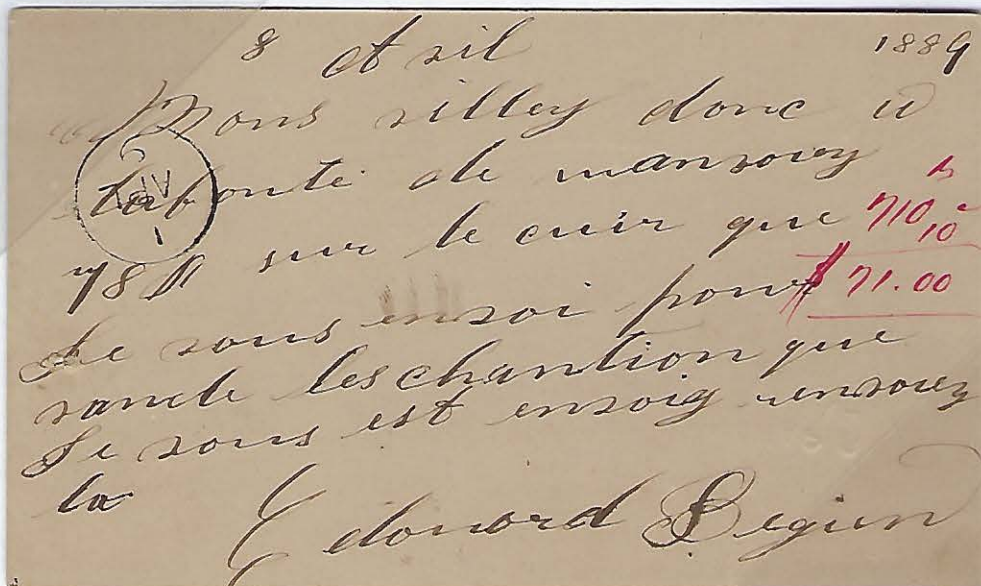
TYPE V-19 HANDSTAMP USED IN 2ND REVIVAL

Postcard from Oshawa to Montreal with OSHAWA ONT. DE22/88 circle dated stamp and a SORTING 1/DEC24/24 V-19 cancel.



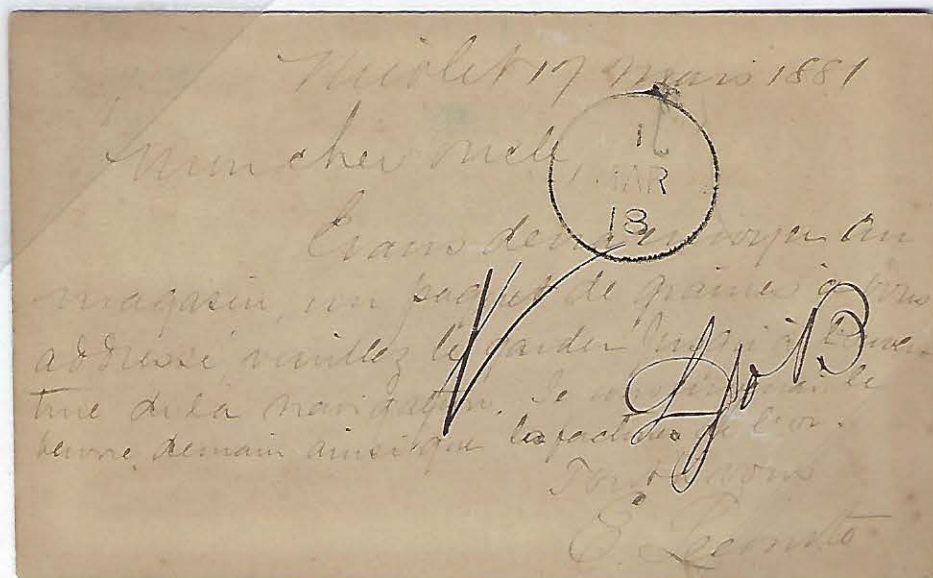
TYPE V-19 HANDSTAMP USED IN 3RD REVIVAL

Postcard from Levis to Montreal with LEVIS, QUE. AP 8/89 circle dated stamp and SORTING 1/APL/9 V-19 cancel.



TYPE V-22 HANDSTAMP FIRST DAY OF USE IN 1ST PERIOD

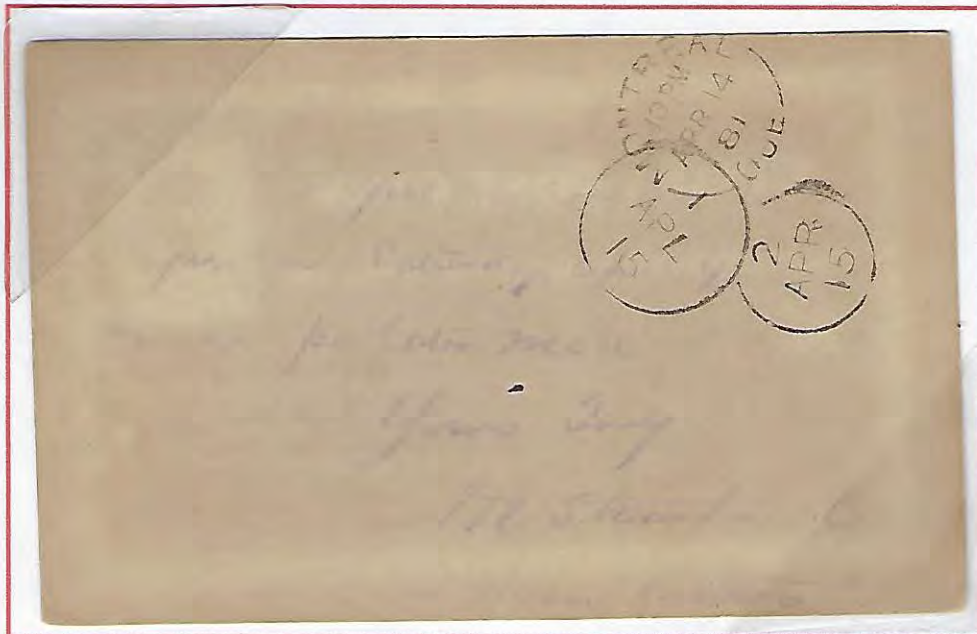
Postcard from Nicolet to Montreal with a NICOLET, L.C. MR17/1881 split circle dispatch cancel and a SORTING 1/MAR/18 V-22 cancel.



TYPE V-22 CONCURRENT USE WITH V-19 HANDSTAMP

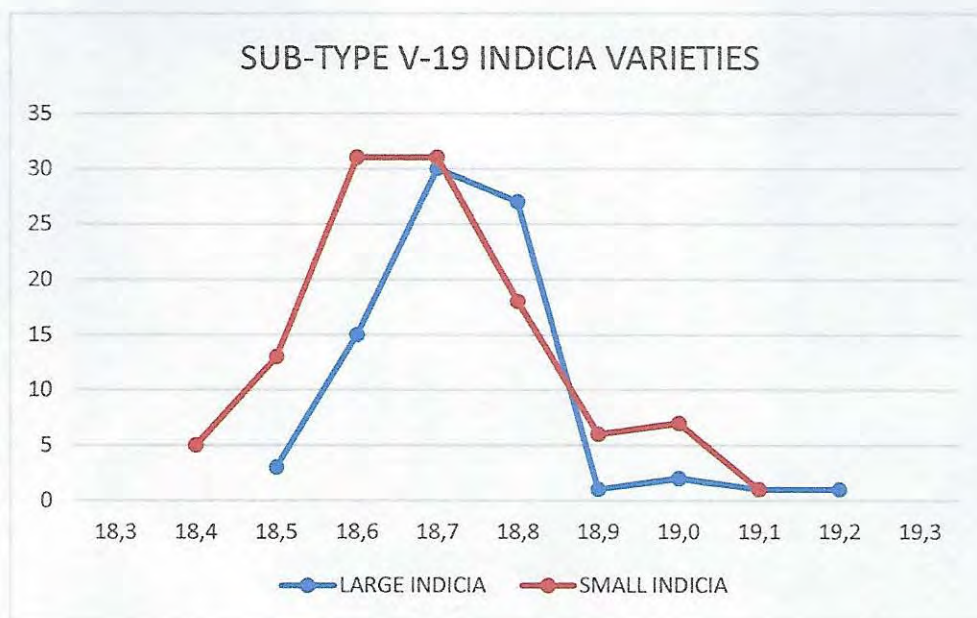


As seen in the table presenting the periods of use, the V-22 and V-19 usage overlaps, this postcard mailed from Toronto to Montreal presents both cancels: a SORTING 1/APL/15 V-22 and a 2/APR/15 V-19. Dispatched with a TORONTO, ONT. APR13/12PM/81 duplex cancel and a MONTREAL, QUE. 10PM/APR14/81 split circle receiver.



Pre-stamped 1c letter paying the local drop letter rate, cancelled by a MONTREAL, CANADA 1/AU1/PM duplex and both cancels: a SORTING 4/AUG/1 V-19 and a next day 1/AUG/2 V-22. Received at 1pm, as it was undeliverable on the 4th delivery of the day, the cover was resorted for the first next day delivery. The mailman indicated "tried 5 times door bell J.S.", the letter was transferred to the dead letter office 14 days later and received an octagonal NOT CALLED FOR, MONTREAL AU15/82.

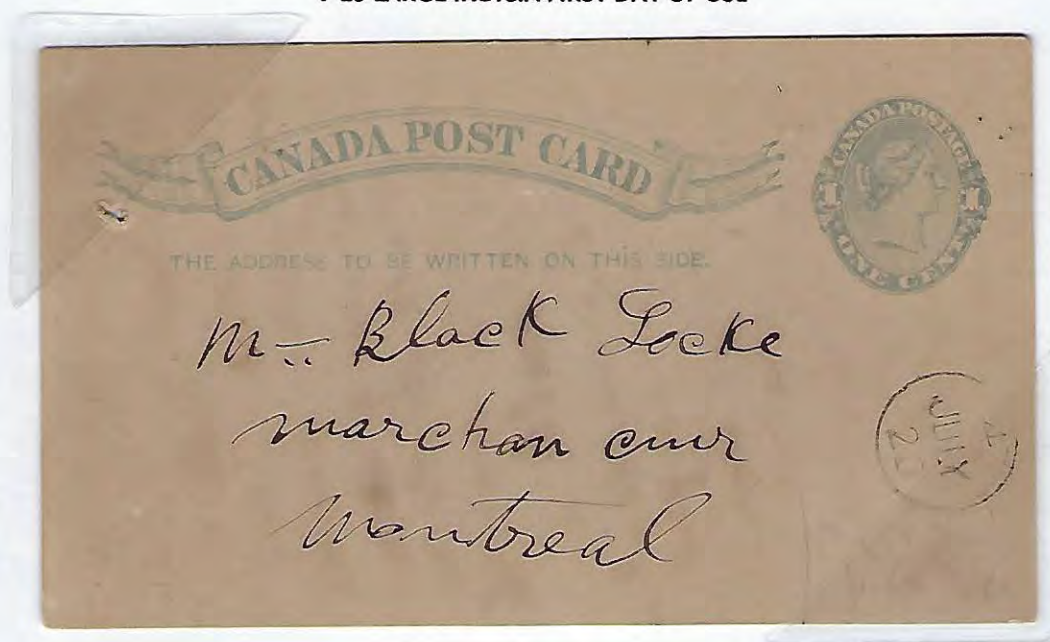
INDICIA VARIETIES USED IN V-19 MONTHS



Further analysis of sub-type V-19 shows that 2 sets of indicia were used for that hammer. They will be described as LARGE and SMALL indicia. In the next graphic, the strikes from the V-19 sub-type were separated by the indicia found in them. The diameters are too close to separate the hammers. They will be identified by the indicia: sub-types V-19S and V-19L for the small and large indicia.

The sub-type V-19 hammer is known with the small indicia (V-19S) as early as January 1878. The large indicia (V-19L) appeared in July 1882 and were used at the same time as the small indicia until January 1886. All the revival used the large indicia. The months of April, June and July are easy to differentiate as the abbreviations are different: small indicia APR, JUN, JUL; large indicia APL, JUNE, JULY. For the other months a difference of a little over 1 mm can be observed.

V-19 LARGE INDICIA FIRST DAY OF USE



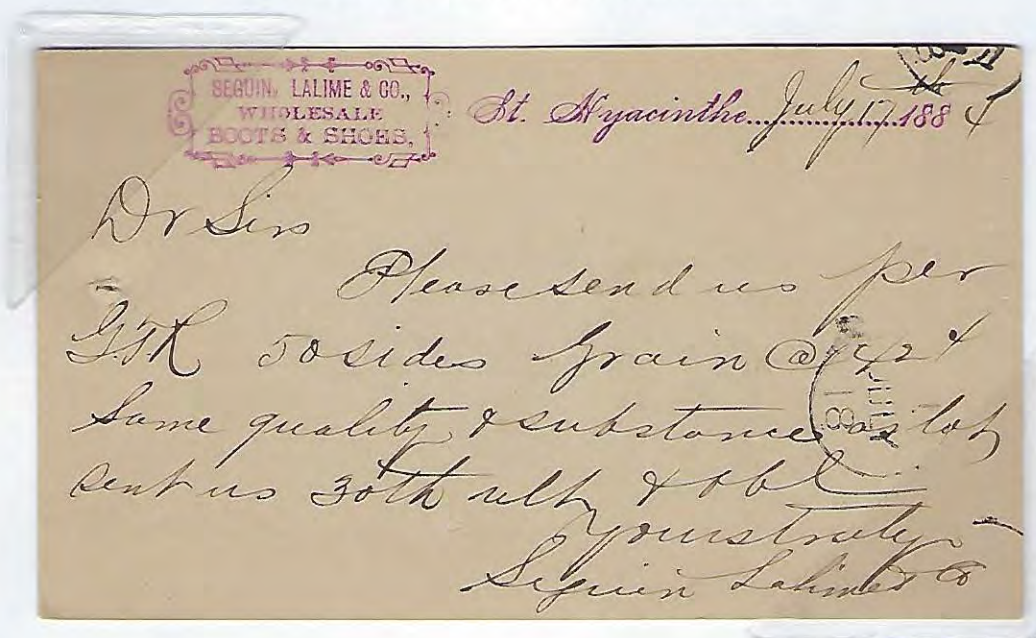
Local postcard with a SORTING V-19L cancel displaying the first time of usage of the large indicia JULY on 4/JULY/20 in 1882 (manuscript year on back).

SORTING CANCEL

TYPE V

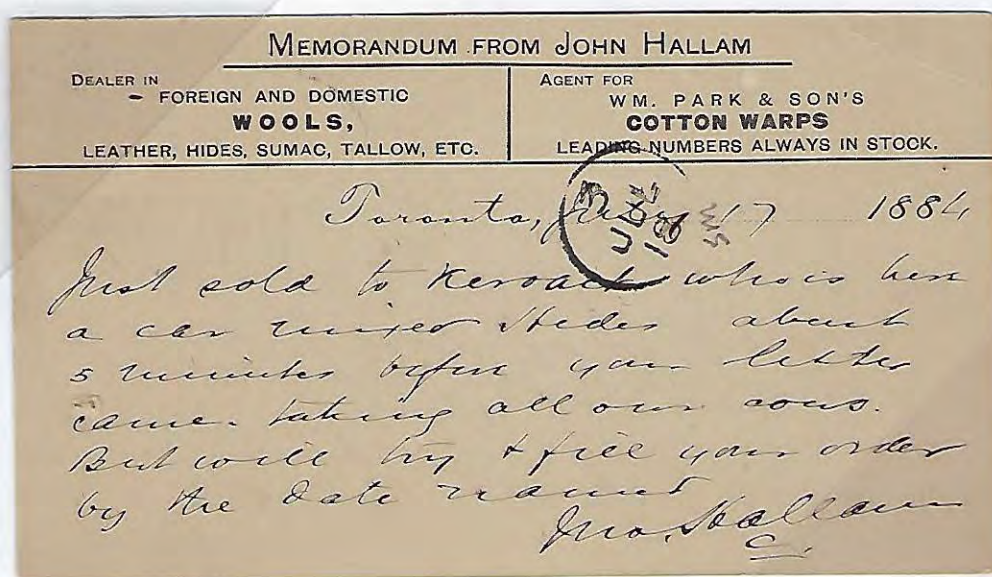
Two covers addressed to Black & Locke in Montreal, the first showing a V-19L SORTING cancel used in the first distribution period and the second a V-19S SORTING cancel used in the 3rd distribution period on the same day on July 18th, 1884.

LARGE AND SMALL INDICIA SAME DAY USAGE



Cover addressed to Black & Locke in Montreal, cancelled by MONTREAL, QUE. 5/JUL18/AM split circle; back stamped with a same day 1/JULY/18 V-19L SORTING cancel.

LARGE AND SMALL INDICIA SAME DAY USAGE

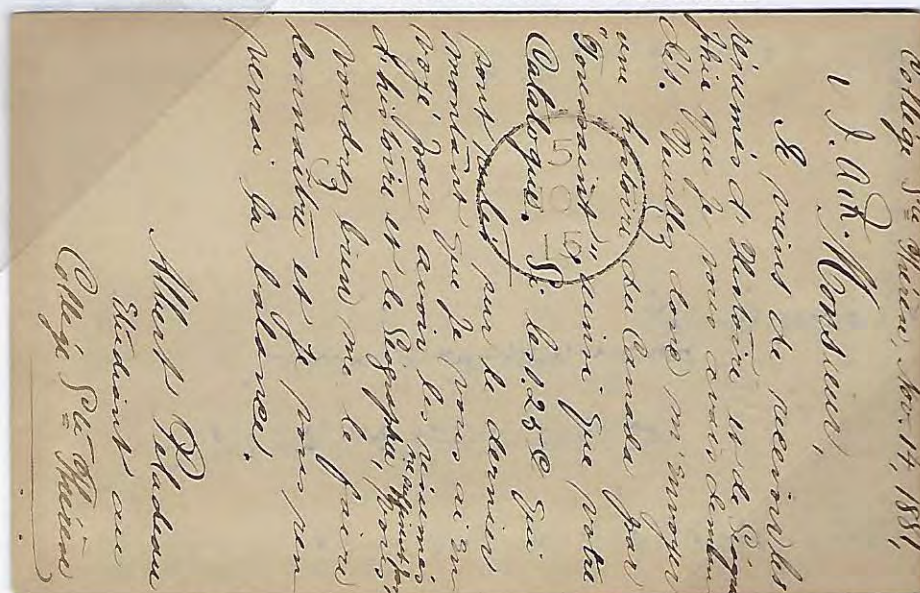


Second cover addressed to Black & Locke in Montreal with a TORONTO, ONT. duplex dated JUL17/3P.M./84; back stamped with a next day 3/JUL/18 V-19S SORTING cancel.

EVOLUTION OF THE TIME MARKS USED IN TYPE V CANCELS

Starting in September 1877 or earlier, the time marks were changed from an 8, 11, 2 and 18 hour-based system to a delivery number (1 to 6) representing the 1st to 6th delivery in the day (4 in the districts and 6 in the business section (head office)). Examples of delivery numbers 1 to 4 were presented on V-19 SORTING cancels on the preceding pages.

DELIVERY 5 TIME MARK INDICIA ON TYPE V-22 CANCEL



Postcard mailed from STE-THERESE DE SHAWVILLE on NO15/81 to Montreal with a V-22 5/NOV/15 SORTING cancel.

DELIVERY 6 TIME MARK INDICIA ON TYPE V-21 CANCEL



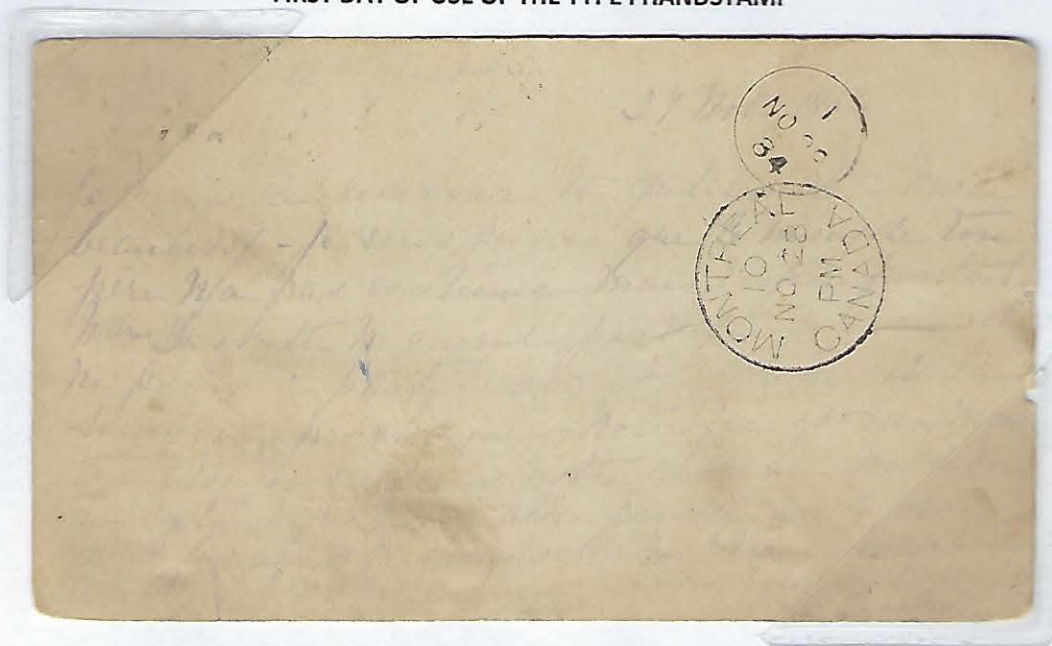
Cover with 1c and 2c small queen stamps cancelled with a manuscript X and a free BELOEIL-VILLAGE/QUE. SP 2/77 split circle cancel on front, with 3 back stamps: a ST-HILAIRE-STATION/C.E. SP 3/77 split circle transit cancel, a MONTREAL/QUE. 7/SP 3/77 split circle receiver and a SORTING V-21 6/SEP/3 cancel for the 6th (last) delivery in the business district.

SORTING CANCEL

TYPE I

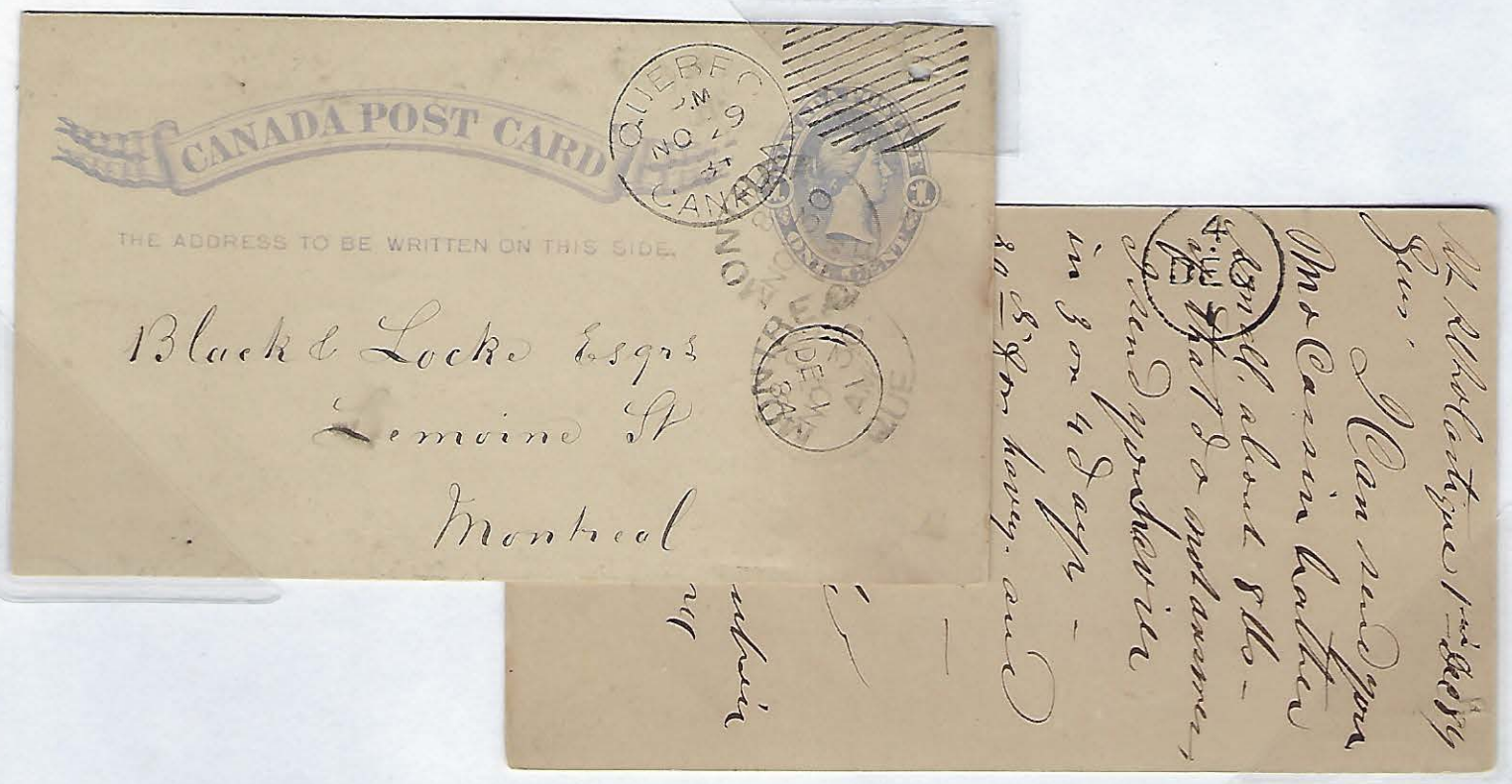
In late November 1884, a HOUSER type I handstamp was introduced in Montreal; after a transition period it will become the most used handstamp.

USED FROM: 1884-11-29 - 1903-04-04
FIRST DAY OF USE OF THE TYPE I HANDSTAMP



The first reported use of a type I SORTING cancel is on November 29, 1884. Postcard with NEW YORK/C NOV27/530PM duplex cancel, MONTREAL, CANADA 10/NO28/PM receiver and type I SORTING cancel 1/NO29/84.

CONCURRENT USAGE OF TYPES I AND V

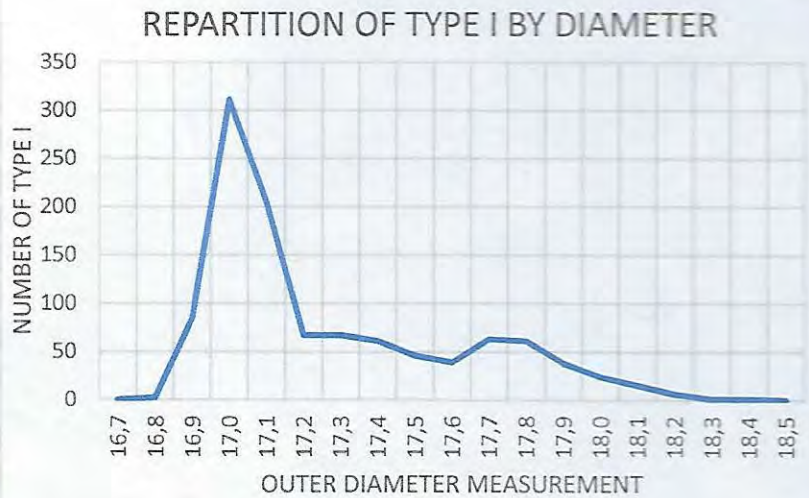


On December 1st, 1884, both types of cancels were used on the same day, a type I SORTING cancel for the 1st delivery (1/DE1/84) and a type V-19L SORTING cancel for the 4th delivery (4/DEC/1).

THE TYPE I SUB-TYPES

For type I strikes, over 1000 strikes were measured, and the data was compiled in an Excell file. The search for possible sub-types, as for type V, is based on the diameter, the other information being constant. The graphic shows the possibility of 2 or maybe 3 sub-types measuring 17 mm, 17,4 mm and 17,8 mm.

The next table presents the same data organised by year. The blue zone has strikes from November 1884 to the end of July 1892, the average diameter would be around 17,1 mm. The red zone has strikes from 1886 to 1898, they are averaging 17,5 mm in diameter; from August 1892 to 1898, no strikes smaller than 17,3 mm are reported indicating the end of use of the I-17 hammer; and the green zone has limited number of strikes but none smaller than 17,8 mm, a sub-type measuring some 18 mm can be deduced.



DIAMETER in mm	TOTAL	1884	1885	1886	1887	1888	1889	1890	1891	1892-07	1892-08	1893	1894	1895	1896	1897	1898	1899	1900	1901	1902	1903
16,8	2					1				1												
16,9	85	9	22	27	6	7	3		3	8												
17,0	311	22	63	104	50	22	15	7	18	10												
17,1	204	3	47	25	38	29	31	3	20	8												
17,2	66			1	18	16	12	5	10	4												
17,3	63				14	26	9	5	3	1	2	2	1									
17,4	60				4	12	20	5			9	8	1		1							
17,5	44					4	8	4	1		3	7	9	6	1	1						
17,6	36							1				13	12	10								
17,7	63											15	22	18	4		4					
17,8	61											4	19	22	5	9	2					
17,9	38											1		12	7	17		1				
18,0	24													2	3	8	4	3	1	2	1	
18,1	15														1	8	3	3				
18,2	6																3	2		1		
18,3	1																1					
18,4	1																1					

As was shown for the type V hammer, more then one hammer was used on a single day, this could explain the overlap.

PERIOD OF USE OF THE TYPE I SUB-TYPES SORTING CANCELS

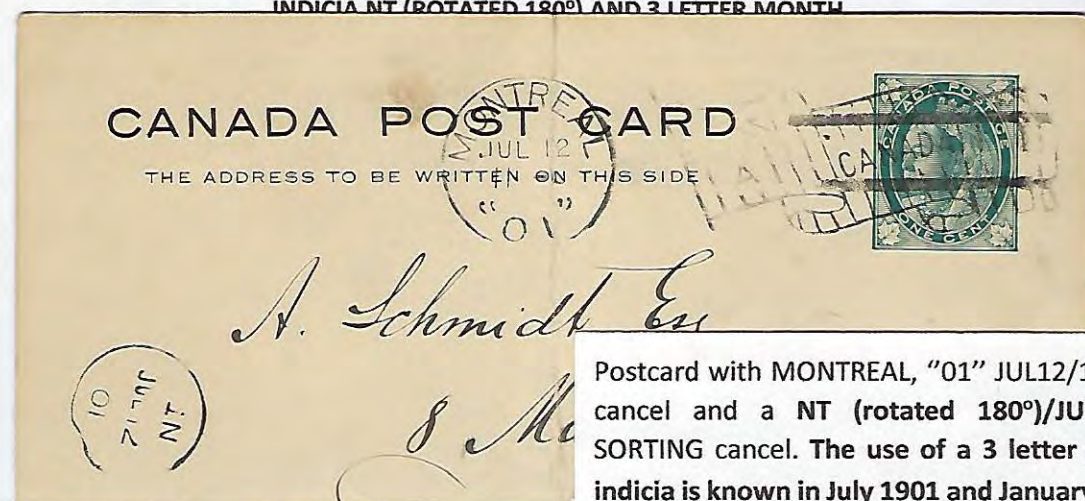
FROM	TO	I-17	I-17,5	I-18
1884-11	1886-12	X		
1887-01	1892-07	X	X	
1892-08	1892-12		X	
1893-01	1898-04		X	X
1898-05	1902-01			X

SORTING CANCEL WITH INDICIA MT TYING STAMP

Letter sent from ST-LAZARE on June 2, 1897 (free strike) with MONTREAL, CANADA 24/JU3/97 circle dated strike receiver and MT/JU 3/97 SORTING cancel. As the stamp had been tied very faintly, a second SORTING cancel was applied on the front. Only copy in the over 1000 copies studied.



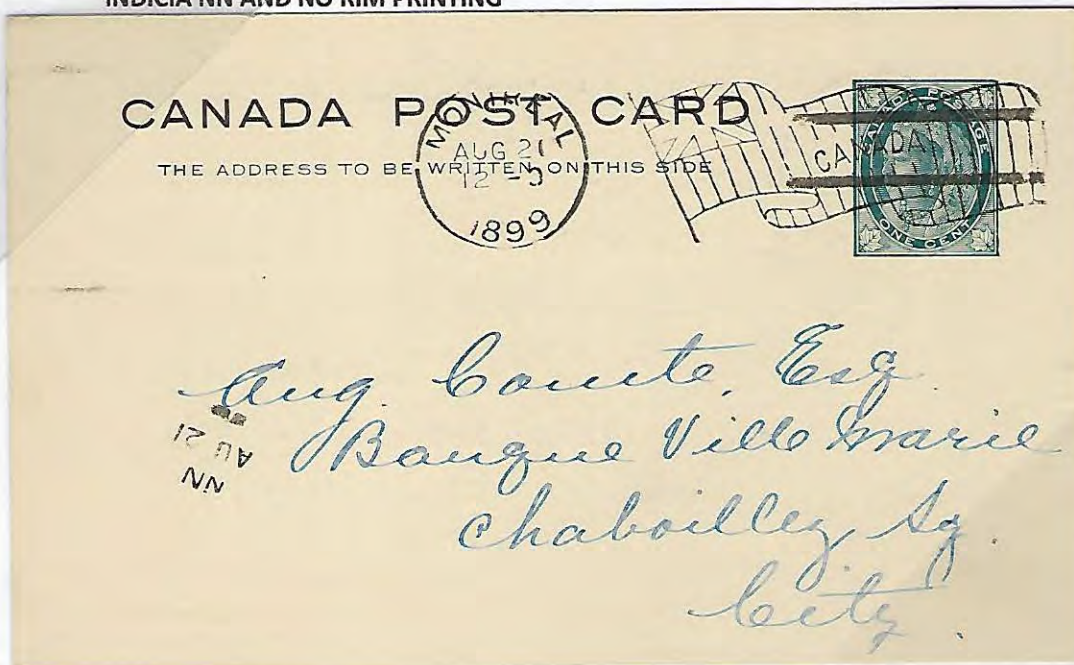
INDICIA NT (ROTATED 180°) AND 3 LETTER MONTH



Postcard with MONTREAL, "01" JUL12/11- flag cancel and a NT (rotated 180°)/JUL12/01 SORTING cancel. The use of a 3 letter month indicia is known in July 1901 and January 1902.

INDICIA NN AND NO RIM PRINTING

Postcard with MONTREAL, 1899 AUG21/12-0 flag cancel and a NN/AUG21/99 SORTING cancel. The NN indicia has a narrow and a wide N; the narrow N is reported at left and at right. No rim (circle) printed; this state is seen from 1899 to 1901.



EVOLUTION OF THE TIME MARKS USED IN TYPE I CANCELS

In November 1884, the time marks used in type I handstamps were the same as those already used in type V hammers (a delivery number from 1 to 6). A 7 time mark appears in the time slot on November 7, 1887, as we can assume that a 7th delivery was not added, the numbering system would now represent sorting shifts at the main post office (Head Office). This is further supported by the apparition of 8 on January 5, 1888, MT (midnight) on August 26, 1892, NT (night) on October 19, 1898 and NN (noon) on JULY 10, 1893. As this is a new research, material in other collector's holdings could contain earlier or later dates.

INDICIA	ERD	LRD	INDICIA	ERD	LRD
1	1884-11-29	1902-03-16	7	1887-11-07	1892-05-18
2	1884-12-05	1900-05-18	8	1888-01-05	1889-01-11
3	1884-12-23	1903-04-04	MT	1892-08-26	1902-01-28
4	1885-01-23	1900-10-29	NT	1898-10-19	1902-03-04
5	1884-03-18	1901-09-17	NN	1893-07-10	1902-03-05
6	1885-10-28	1898-06-16			

The early disappearance of the 7 and 8 indicia in 1892 and 1889 could be explained by the arrival of the NT and MT indicia.

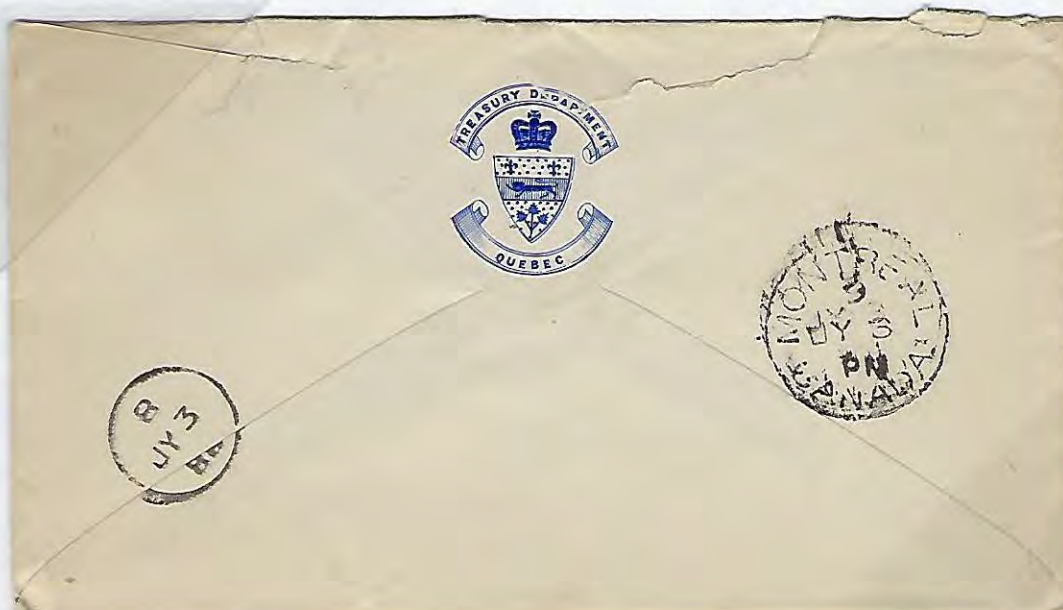
INDICIA 7

Postcard cancelled with a HALIFAX, CANADA 1/DE19/90 duplex, a MONTREAL, CANADA CDS receiver and a type I-17 7/DE20/90 SORTING cancel; as it was redirected a second type I-17 SORTING cancel dated 1/DE22/90 was applied.



INDICIA 8

Letter cancelled with a QUEBEC, CANADA AM/JY3/88 duplex, a MONTREAL, CANADA 9/JY3/PM CDS receiver and a type I-17 8/JY3/88 SORTING cancel.



SORTING CANCEL

TYPE I

The year is known missing in 1895 from January 3rd (or earlier) to March 20th, the year prints from March 23 on.
In 1897, the year is missing from January 28th (or earlier) to March 23rd, the year prints on April 9.

MISSING YEAR IN 1895 – ERD and LRD



Postcard with a ST-HYACINTHE, QUE. PM/JU3/95 square circle cancel and a MY/JA3/blank SORTING cancel. Letter with a MONTREAL, CANADA 16/MR20/93 duplex cancel and back stamped with an HOCHELAGA, QUE. 6PM/MR20/95 CDS and a 6/MR20/blank SORTING cancel.

MISSING YEAR IN 1897 – ERD and LRD

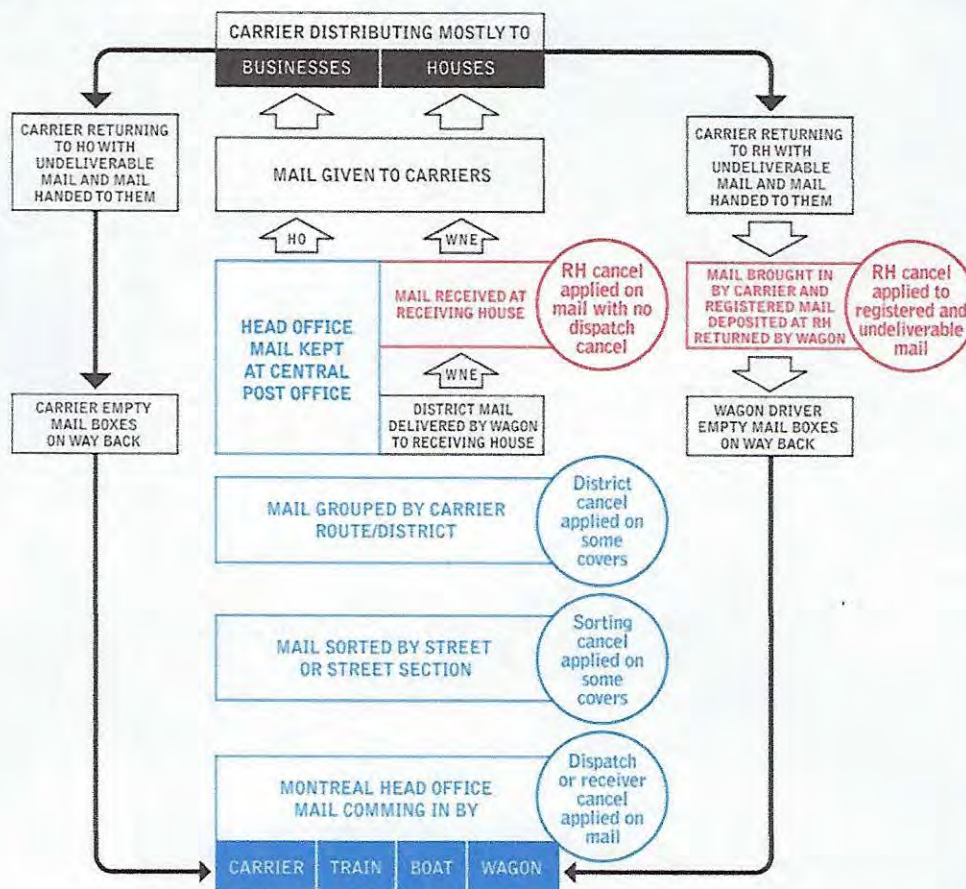


Letter from STANSTEAD, QUE. with a JA28/97 split circle free cancel and 2 4-ring 41 cancels tying a 3c small queen stamp; back stamped with a MONTREAL, 1897 JAN29/8—0 CDS receiver and a 1/JA29/blank SORTING cancel. Letter postmarked COASTAL G.P.O. WEST/NEWF'D MR16/97; back stamped MONTREAL, CANADA 22/MR23/97 CDS receiver and a MT/MR23/blank SORTING cancel.

DISTRICT CANCEL

Cancels with the lettering CARRIER at the top and a direction followed by DIST at the bottom are found between 1874 and 1884. These CARRIER MARKS force us to deviate from the historic view that presents the CARRIER MARKS as a unified set. Based on our hypothesis that they had to have a different function than the SORTING carrier marks cancels, those cancels will be categorized as DISTRICT carrier marks cancels.

DIAGRAM SHOWING AN HYPOTHESIS OF HOW THE MAIL WAS DELIVERED IN MONTREAL





The SORTING carrier mark cancels would be applied on each group of letters sorted by street or street section; these sorted letters would then be regrouped by carrier route and finally by district for delivery by wagon to the Receiving Houses; either on each carrier route or for the whole group of letters for a district, the DISTRICT carrier mark cancel would be applied to identify the specific Receiving House where the sorted letters were to be delivered to the carriers. A similar cancel was in use for the HEAD OFFICE for a few years.

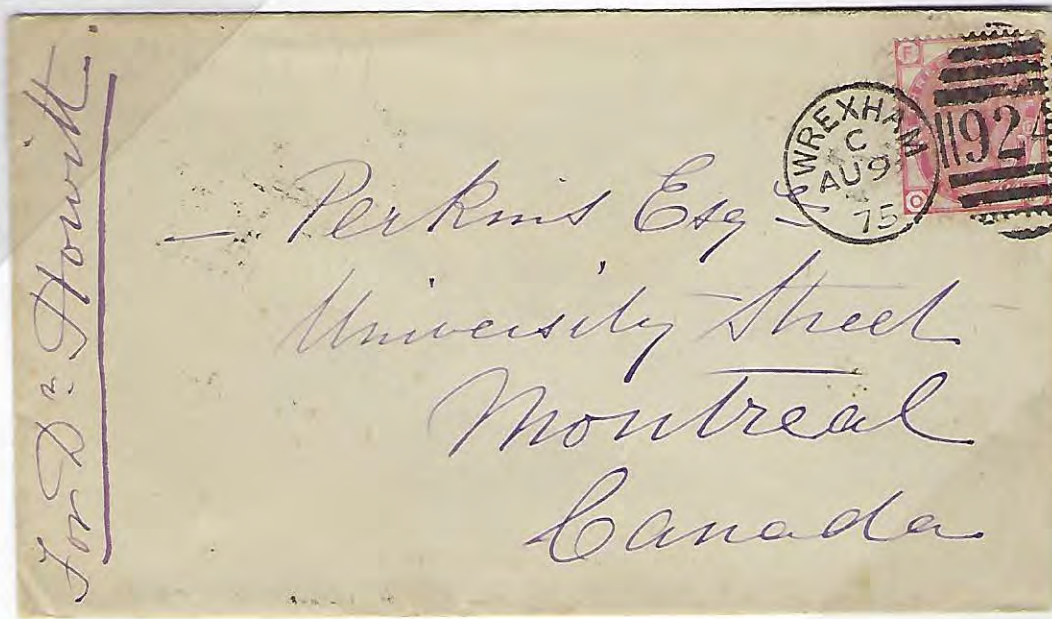
DISTRICT CANCEL

1A-1B

PERIOD OF USE OF THE TYPE 1A-1B DISTRICT CANCELS

TYPES	DISTRICT HANDSTAMP		TYPE	ERD	LRD	DISPATCH NUMBER					
	UPPER	LOWER				1	2	3	4	5	6
TYPE 1A 	CARRIER	NORTH-DIST.	1A	No4/AP 19 (75)	No1/DE14 (78)	X	X	X	X		
	CARRIER	WEST-DIST.	1A	No3/AU 19 (75)	No1/JY31(78)	X	X	X	X		
	CARRIER	EAST-DIST.	1A	No3/JY23 (75)	No1/DE24 (78)	X	X	X			
TYPE 1B 	CARRIER	HEAD OFFICE	1A	No4/DEC/20 (75)	No6/FE15 (76)	X			X		X
	CARRIERS-STAMP	HEAD OFFICE	1B	1/MAR/17 (76)	4/APL/20 (77)	X	X	X	X	X	X

NORTH DISTRICT



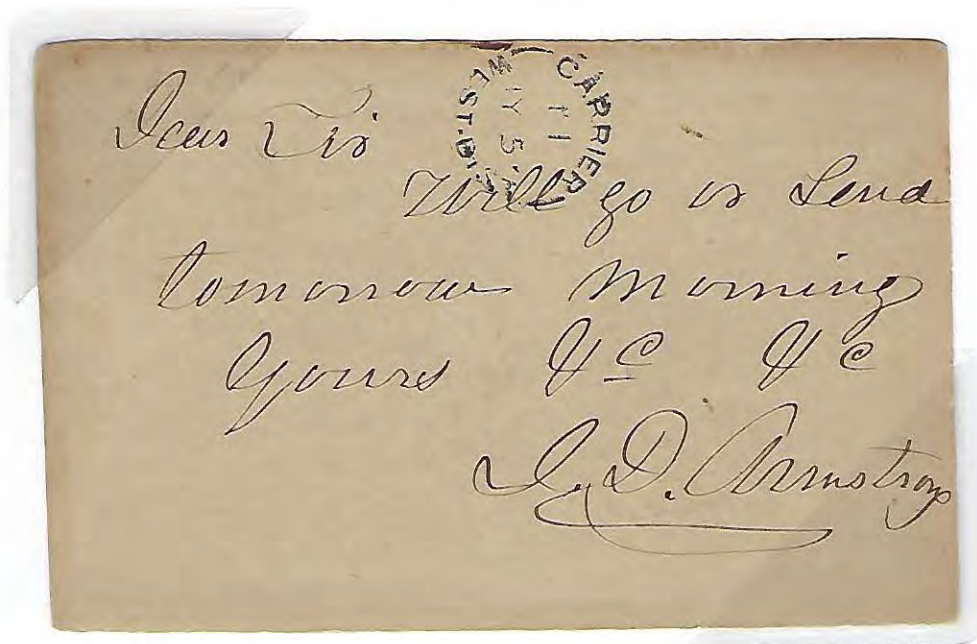
Cover addressed to Montreal Canada with a WREXAM, 924. C/AU9/75 duplex tying a Great Britain 2½d (plate 17 position FO) and back stamped with a MONTREAL/C.E. 8/AU22/75 split circle receiver and a DISTRICT carrier mark cancel CARRIER/NORTH-DIST. No1/AU23.

EAST DISTRICT



Envelope addressed to Montreal with a MONTREAL, QUE. 10/OC 1/78 duplex tying a 1c small queen stamp paying drop rate and back stamped with a DISTRICT carrier mark cancel CARRIER/EAST-DIST. No1/OC 2.

WEST DISTRICT



Prepaid postcard addressed to Montreal P. of Q. with a SOUTH-DURHAM L.C. JY4/1876 double split circle dispatch; back stamped with a DISTRICT carrier mark cancel CARRIER/WEST-DIST. No1/JY 5.

HEAD OFFICE -- ERD



Envelope addressed to Montreal P.Q. with a segmented cork cancel tying a 2c and a 3c small queen stamp, a free LANORAIE, QUE. DE29/75 split circle and a free strait line REGISTERED; back stamped with a MONTREAL, C.E. DE30/75 split circle receiver and a DISTRICT carrier mark cancel CARRIER/HEAD-OFFICE No4/DE30. (1st of 3 known type 1A Head Office cancel).

HEAD OFFICE -- MOURNING COVER



A mourning folded sheet addressed to 28 St-Antoine with a 1c small queen stamp tied by a MONTREAL, QUE. 8/JA25/76 split circle and back stamped with a DISTRICT carrier mark cancel CARRIER/HEAD-OFFICE No1/JA25. In 1876 people were confident in the fast delivery service of the postal system; this mourning cover mailed on the 25th was announcing a next day funeral. (2nd of 3 known type 1A Head Office cancel).

HEAD OFFICE -- LRD



Envelope addressed to Montreal with a MONTREAL, C.E. 7/FE15/76 duplex tying a 1c small queen stamp (drop rate); back stamped with a DISTRICT carrier mark cancel CARRIER/HEAD-OFFICE No6/FE15. (3rd of 3 known type 1A Head Office cancel).

WEST AND NORTH DISTRICT



Envelope addressed to Montreal with a cork cancel tying a 3c small queen stamp and a free GORES-LANDING/ONT. JU 9/78 split circle; back stamped with a COBOURG/(ONT) JY09/78 CDS transit a MONTREAL/QUE 1/JUL10/78 split circle receiver, a DISTRICT carrier mark cancel CARRIER/NORTH-DIST. No2/JY 10 and a second DISTRICT carrier mark cancel CARRIER/WEST-DIST. No1/JY 11. **Only cover known with 2 type 1A DISTRICT cancels.**

HEAD OFFICE -- ERD



Envelope inscribed North British & Mercantile Insurance Company addressed to Montreal with a MONTREAL, C.E. 7/MR16/76 duplex tying a 1c small queen stamp paying the drop letter rate; back stamped with a DISTRICT carrier mark cancel CARRIERS-STAMP/HEAD-OFFICE 1/MAR/17.

HEAD OFFICE -- LRD



Envelope addressed to Montreal with a R in oval tying a 3c small queen stamp, a free ST-HYACINTHE, C.E. AP20/187(7) double split circle; back stamped with a MONTREAL, QUE. 1/AP20/77 split circle receiver and a DISTRICT carrier mark cancel CARRIERS-STAMP/HEAD-OFFICE 4/APL/20.

The HEAD OFFICE DISTRICT cancels stopped being used rather quickly; this can be explained by the fact that as the letters did not have to be dispatched to another location for distribution in the business sector, there was really no need to identify a destination.

CARRIERS-STAMP HEAD-OFFICE ON REGISTERED WITH 2c SMALL QUEEN




Envelope addressed to Montreal with 2-RING 3 (Quebec) cancels tying a 2c and a 3c small queen stamp, a strait line REGISTERED in red and a free QUEBEC, C.E. PM/JU20/76 split circle; back stamped with a MONTREAL, C.E. JU21/76 split circle receiver and a DISTRICT carrier mark cancel CARRIERS-STAMP/HEAD-OFFICE 1/JU/21. Registration fee paid by a 2c small queen.

CARRIERS-STAMP HEAD-OFFICE ON REGISTERED WITH 2c REGISTERED LETTER STAMP



Registered letter addressed to Montreal with 2-RING 3 (Quebec) tying a 3c small queen and a 2c RLS, strait line REGISTERED in red and a free QUEBEC/C.E. PM/NO25/76 split circle; back stamped with a MONTREAL/C.E. NOV26/76 split circle receiver, a DISTRICT carrier mark cancel CARRIERS-STAMP/HEAD-OFFICE 1/NOV/27, a wax seal POST OFFICE QUEBEC. Registration fee paid by 2c RLS.

PERIOD OF USE OF THE TYPE 2 DISTRICT CANCELS

	DISTRICT HANDSTAMP		TYPE	ERU	LRU	DISPATCH NUMBER			
	UPPER	LOWER				1	2	3	4
	CARRIER	NORTH DIST	2	No4/FE21 (79)	No1/JA 2 (82)	X	X		X
	CARRIER	WEST DIST	2	No2/MR25 (79)	No2/MR 6 (82)	X	X	X	X
	CARRIER	EAST DIST	2	No1/OC 2 (78)	No1/FE25(82)	X	X	X	X

NORTH DISTRICT – 1ST DISTPATCH

Envelope addressed to City with a MONTREAL, QUE. 7/DE26/79 duplex tying a 1c small queen stamp and a DISYTRICT carrier mark cancel CARRIER/NORTH DIST No1/DE 27.

NORTH DISTRICT – 2ND DISTPATCH

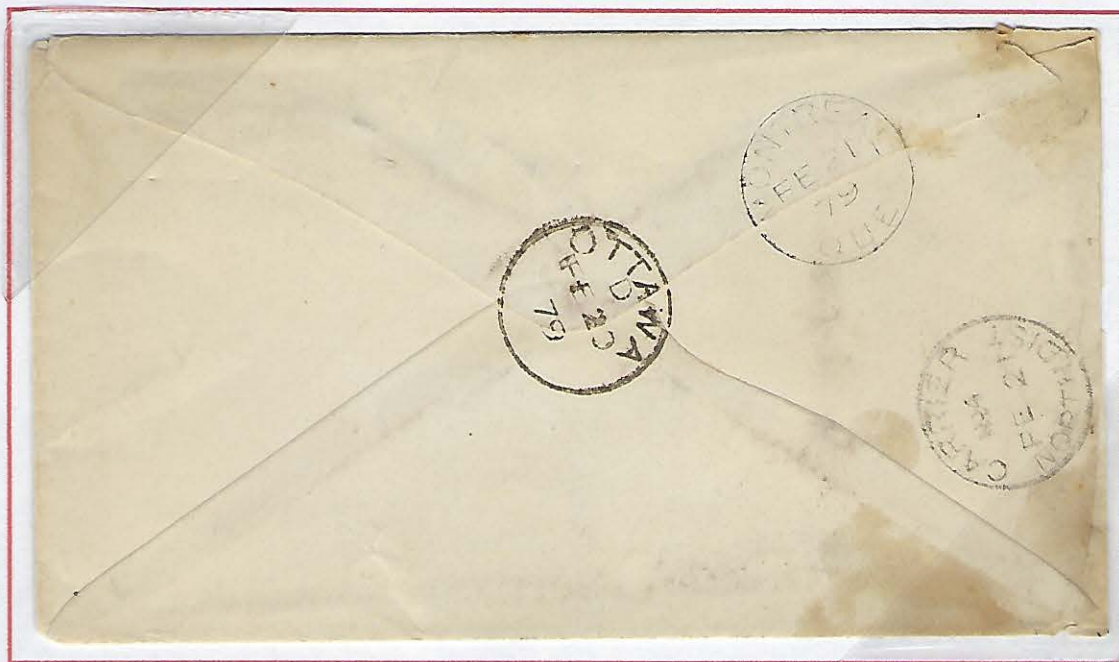
Postcard addressed to Montreal P.Q. with a LACOLLE/C.E. JY6/1880 double split circle, a MONTREAL/QUE 10AM/JUL 6/80 split circle receiver and a DISTRICT carrier mark cancel CARRIER/NORTH DIST No2/JY 6.

NORTH DISTRICT ON REGISTERED MAIL – 4TH DISTPATCH – ERD

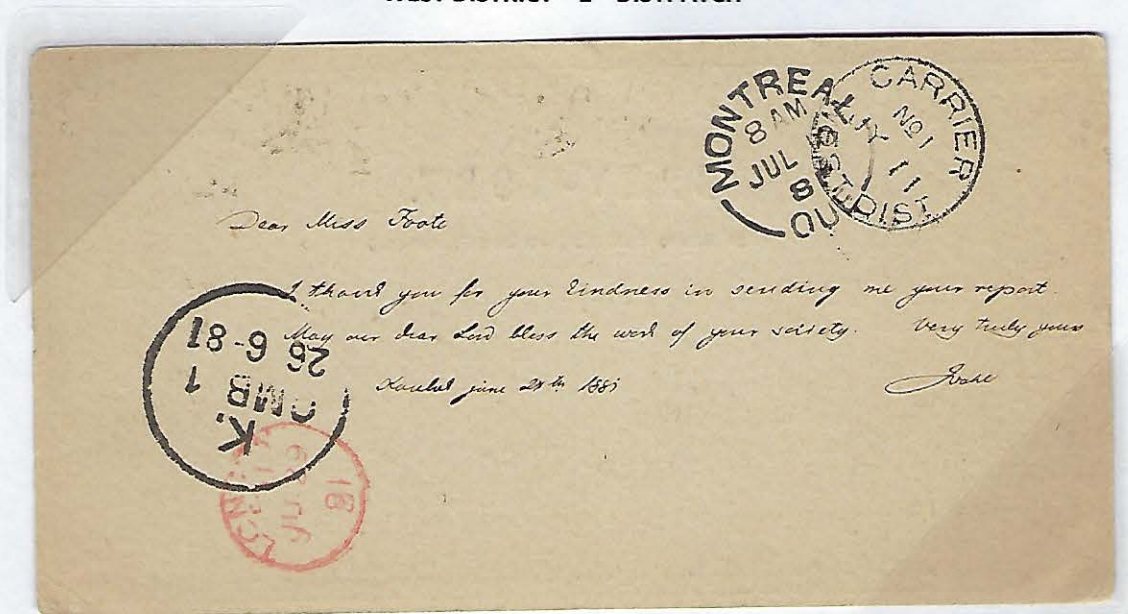
DISTRICT carrier mark cancels are rarely seen on registered mail as these covers were usually treated separately.



Image of front



Registered envelope addressed to Montreal with a strait line REGISTERED tying a 3c small queen stamp and a 2c RLS, free identical strike and an AYLME/QUE. PM/FE20/79 split circle: back stamped with a OTTAWA D/FE20/79 CDS transit, a MONTREAL/QUE FE21/79 CDS receiver and a DISTRICT carrier mark cancel CARRIER/NORTH DIST No4/FE21.

WEST DISTRICT - 1ST DISTPATCH

Danish postcard addressed to Montreal Canada with a 44 in a double circle, a NAESTVED/2POST 25/6 CDS; back stamped with a K./OMB 1/26/6/81 CDS, a LONDON RU/JU29/81 CDS; a MONTREAL/QUE 8AM/JUL10/81 split circle receiver and a DISTRICT carrier mark cancel CARRIER/WEST DIST No1/JY 11.

EAST DISTRICT - 2ND DISTPATCH

Envelope addressed to Montreal Canada with a cork cancel tying a 3c USA stamp, a free SPRINGHILL, MINN. AUG/10/4PM CDS, a MONTREAL, QUE. 8AM/AUG13/80 split circle receiver and a DISTRICT carrier mark cancel CARRIER/EAST DIST No2/AU13.

DISTRICT CANCEL

PERMANENT FEATURE

As the handstamps of type 1A and type 2 all print the N^o before the dispatch number, the next question arises: is the N^o a permanent feature of the handstamps? The next 2 covers will answer that question.

NO N^o IN DISPATCH NUMBER – TYPE 1A



Cover addressed to Montreal with a geometric cork cancel tying a 3c small queen stamp, a free GUELPH, ONT. AP25/78 split circle and back stamped with a DISTRICT carrier mark cancel CARRIER WEST DIST (No)2/AP 26. (No absent)


N^o ROTATED 180° IN DISPATCH NUMBER – TYPE 2



Envelope addressed to Montreal P.Que. with KINGSTON CANADA AM/JA 21/82 duplex tying a pair of 3c small queen stamps; back stamped with a MONTREAL CANADA 8/JA22/AM CDS receiver and a DISTRICT carrier mark cancel CARRIER/WEST DIST No1(rotated 180°)/JA23.

Contrary to the previous types, these cancels do not have the word CARRIER along the upper rim. In his articles on carrier cancels; J. Houser classified this cancel for Montreal as a type III carrier mark; it is the opinion of this author that the CARRIER MARKS should be separated in 2 categories: the SORTING cancels and the DISTRICT cancels and that it belongs in the DISTRICT cancel section of the carrier marks.

PERIOD OF USE OF THE TYPE 3 DISTRICT CANCELS

	OFFICES	TYPE	ERU	LRU	DISPATCH NUMBER			
					1	2	3	4
	NORTH DIST.	3	3/MAY 9/N (82)	3/NOV 20/N (84)	X	X	X	
	WEST DIST.	3	1/APL8/W (82)	1/DEC24/W (84)	X	X	X	X
	EAST DIST.	3	1/APL11/E (82)	1/JUN10/E (84)	X	X	X	X
	1 DAY REVIVAL		4/SEP 1/E (89)					X

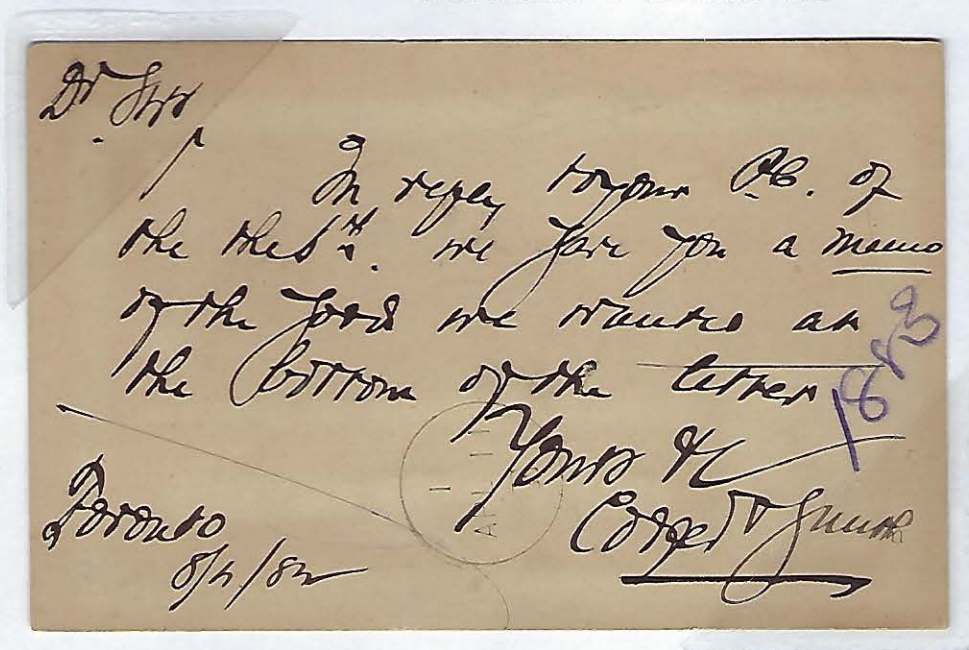
Sometimes these covers are difficult to date precisely, neither the DISTRICT cancels or the MONTREAL receivers or dispatch cancels indicated the year.

NORTH DISTRICT UNDELIVERABLE MAIL – 3RD DISPATCH

This cover was delivered to 334 Peel St., a first postal employee marking indicates “Removed”; meaning it was not accepted by the resident. The address is scratched in blue with the initials LD. Two weeks later it was sent to the Dead Letter Office (DLO) where it received the octagonal NOT CALLED FOR/MONTREAL cancel.



Pre-stamped envelope inscribed AMERICAN FORESTRY CONGRESS addressed to City with a MONTREAL/CANADA 8/AU 16/AM duplex and an octagonal NOT CALLED FOR/MONTREAL AU31/82 cancel; back stamped with a DISTRICT carrier mark cancel 1/AUG 16/N.

EAST DISTRICT - 1ST DISPATCH -- ERD

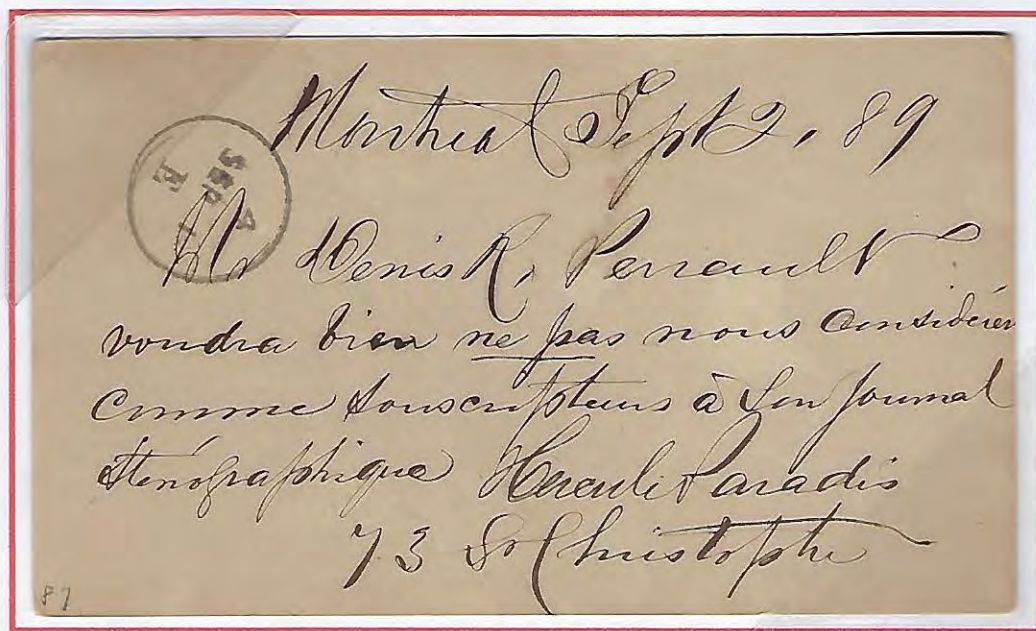
Postcard addressed to Montréal with a TORONTO, ONT. APR8/9PM/82 duplex; back stamped with a DISTRICT carrier mark cancel 1/APL 11/E. The year can only be determined by the Toronto cancel as no year can be found in the Montreal markings for 1892.

EAST DISTRICT – 2ND DISPATCH -- LRD



Envelope addressed to Montreal with a QUEBEC/CANADA PM/JA23/84 duplex tying a 3c small queen stamp; back stamped with a MONTREAL/QUE. 10/JAN24/AM split circle receiver and a DISTRICT carrier mark cancel 2/JAN 24/E. None of the Montreal cancels indicate the year in 1884.

EAST ONLY REPORTED COPY IN REVIVAL PERIOD



Postcard with a RECEIVING HOUSE cancel MONTREAL/E.R.H. SP2/1 split ring type 2B (this is the ERU for this cancel), back stamped DISTRICT carrier mark cancel type 3 4/SEP 1/E (this is a revival after a more then 5 year gap). The 1889 year is manuscript but it is accurate as the EAST RECEIVING HOUSE type 2B cancel began to be used in 1889.

WEST DISTRICT - 1ST DISPATCH

Commercial cover from WILLIAM DARLING & CO. MONTREAL. METALS AND HARDWARE addressed to City with a MONTREAL/CANADA 10/SP6/PM duplex tying a 1c small queen stamp; back stamped with a DISTRICT carrier mark cancel 1/SEP 7/W.

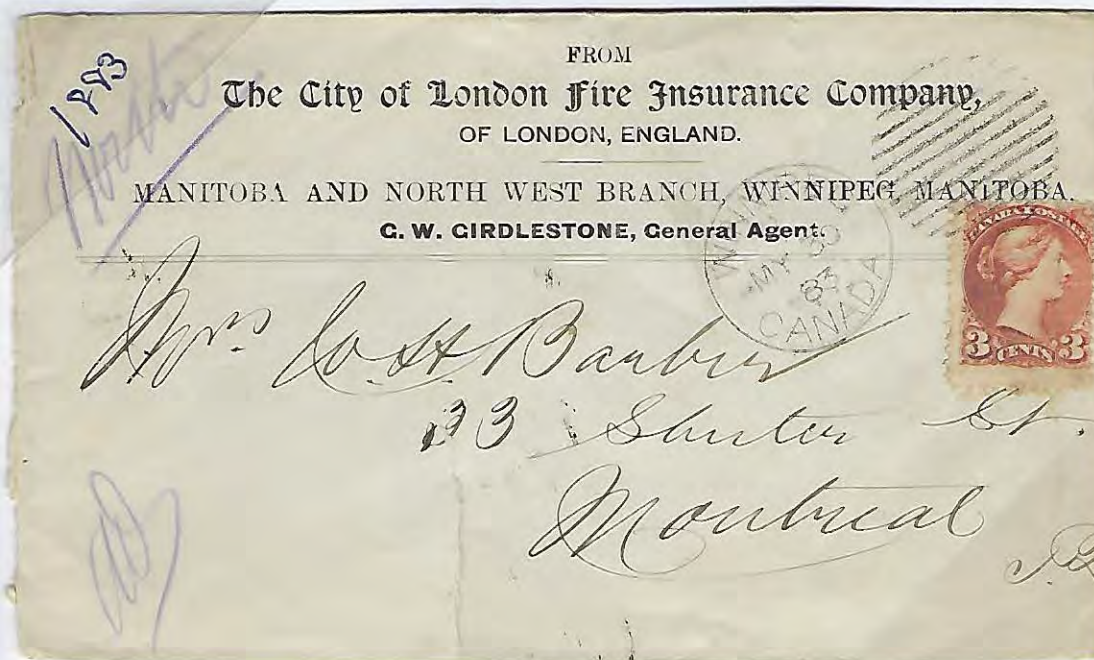
WEST DISTRICT – 2nd DISPATCH – ON REGISTERED COVER

DISTRICT carrier mark cancels are rarely seen on registered mail as these covers were usually treated separately.



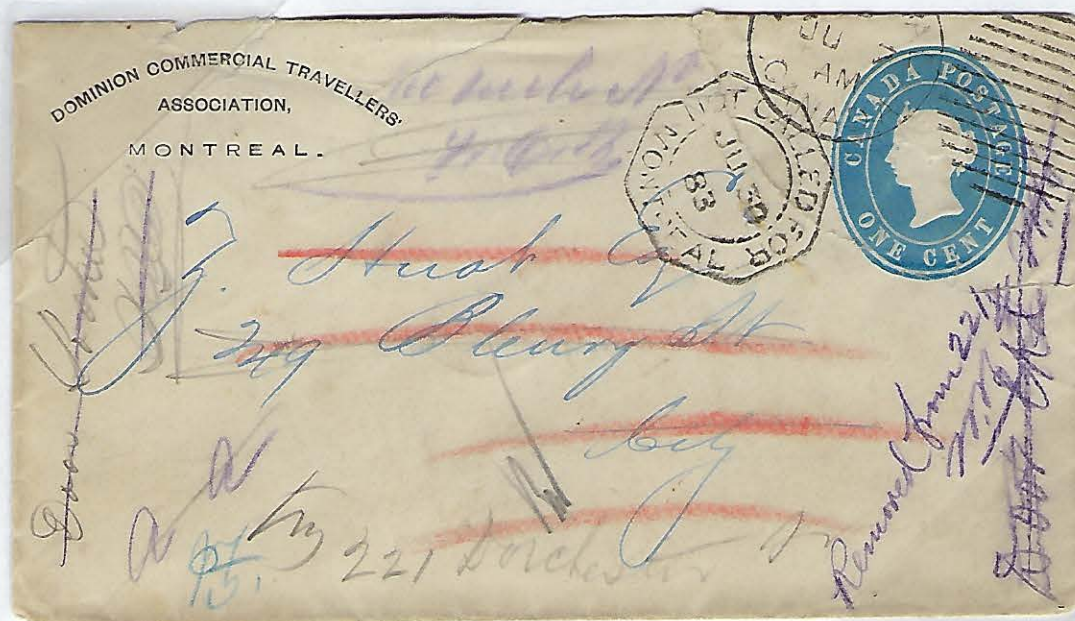
Registered letter addressed to Montreal with 2 cork cancels tying a 3c small queen stamp and a 2c RLS, a LAKEFIELD/ONT. MR 5/84 split circle; back stamped with an identical free strike, 2 G.T.RYT&K/R.P.O. No3 EAST/MR 5/84 transit CDS, a MONTREAL/ CANADA MR 6/84 CDS receiver and a DISTRICT carrier mark cancel 2/MAR 6/W.

WEST AND NORTH – SAME DAY 2 DISTRICTS CANCELS



Commercial envelope from THE CITY OF LONDON FIRE INSURANCE COMPANY LONDON, ENGLAND. MANITOBA AND NORTH WEST BRANCH, WINNIPEG, MANITOBA. addressed to Montreal P.Q. with a WINNEPEG/CANADA 2/MY30/83 duplex tying a 3c small queen stamp; back stamped MONTREAL, QUE. 10/JUN 3/AM split circle receiver and a DISTRICT carrier mark cancel 1/JUN 4/W and a DISTRICT carrier mark cancel 3/JUN 4 (rotated 180°)/N. This cover went to 2 districts due to a sorting error, blue manuscript North added..

NORTH AND EAST -- 2 DISTRICTS CANCELS



Prepaid envelope addressed to City with a MONTREAL, CANADA. ?/JU 7/AM duplex and an octagonal NOT CALLED FOR, MONTREAL. JUN30/83 cancel; back stamped with a DISTRICT carrier mark cancel 3/JUN 7/N and a second DISTRICT carrier mark cancel 1/JUN 8/E. This cover was dispatched to 2 districts because of an error in the address.

NORTH DISTRICT CANCEL TYING STAMP



Envelope addressed to Montreal with a DISTRICT carrier mark cancel 2/DEC28/N tying a 1c small queen. As it is a 1c drop rate cover, it should have received a MONTREAL dispatch cancel; it should at least have been caught at the sorting stage and receive a SORTING cancel; as no cancel was applied when a DISTRICT carrier mark cancel was applied, the carrier used it to tie the stamp.


RECEIVING HOUSE CANCEL

In the report of the Postmaster General for the year ending June 30, 1875, it is noted that "At Montreal, in consequence of the limited accommodation available for the purpose at the Post Office, the large number of Carriers necessarily employed, and the extent of the city, **it was found necessary, in order to insure a more prompt delivery, to establish three branch offices.** Letters and papers for delivery are conveyed to these branch offices by wagons four times daily, and distributed from thence by the Letter Carriers, who are in attendance at certain fixed times to receive them".

BRANCH OFFICES	LOCATION IN 1874	LATER LOCATION	DISTRIBUTION
EAST RECEIVING HOUSE	358 Ste-Catherine-Est		8h30, 11h30, 13h30, 16h
NORTH RECEIVING HOUSE	311 1/2 St-Laurent	504 St.-Laurent Boulevard	
WEST RECEIVING HOUSE	466 St-Joseph	532 St. Catherine St. West (LCD) Notre Dame St. West (LCD)	
HEAD OFFICE	St-Jacques street central office)		8h, 11h, 12h, 13h, 14h, 16h

There were some previous attempts to organise the carrier cancels, J. Houser (1968), G. Teyssier (1996) and H. Deshayé (2011). It is the author's opinion that the cancels should be separated in 3 types (no circle, split circle and CDS) and that the split circle cancel should be divided in 2 sub-types as two sizes are used (22 and 25 mm).

PERIOD OF USE OF THE TYPE 1 RECEIVING HOUSE CANCELS

	MARKINGS	TYPE	ERD	LRD	KNOWN TIME INDICIA											
					1	2	3	4	5	6	7	8	9	10	11	12
	MONTREAL/N R H	1	3/JA12/75	8/MR 7/94			X		X			X			X	
	MONTREAL/W R H	1	2/DE18/74	11/JY3/91		X	X								X	
	MONTREAL/E R H	1	-/DE31/80	-/MY28/84	BLANK											

The SORTING carrier marks and the DISTRICT carrier marks have dispatch number or time period in the indicia's time slot, the RECEIVING HOUSE cancels have the numbers 1 to 12 in that slot, it is the author's hypothesis that these represent hours, from 8 to 12 in the morning and 1 to 5 in the afternoon. (Numbers 6 and 7 have not been seen yet)

RECEIVING HOUSE CANCEL

TYPE I

EAST RECEIVING HOUSE



No type 1 MONTREAL/ERH cancel were included in the Rixon collection. At that time, it was only known from an illustration (at left) from The Canadian Philatelist Vol.24 p.329 Fig. 2. It would be late for a proof as the type 1 NRH and WRH cancels were used as early as 1874. The stamp on the right is the only example found by the author, it is dated BLANK/MY28/84.



As these are outgoing covers, the application of a Receiving House cancel is intriguing; seen on registered covers, it is not needed on regular covers that will receive a dispatch cancel when sorted at the central post office.

NRH HANDSTAMP USED AS A DISPATCH ON REGULAR MAIL WITH A CORK CANCEL TYING THE STAMP - ERD



Cover addressed to Restigouche Co. Bonaventure with a cork cancel tying a 3c small queen, a MONTREAL/N R H 3/JA12/75 type 1 no rim RECEIVING HOUSE cancel, a CHATHAM, ??. JA18/1875 double split circle and a GROSSPOINT, L.C. JA19/1875 double split circle transit.

NRH HANDSTAMP USED AS A DISPATCH ON REGULAR MAIL WITH A MONTREAL CANCEL TYING THE STAMP



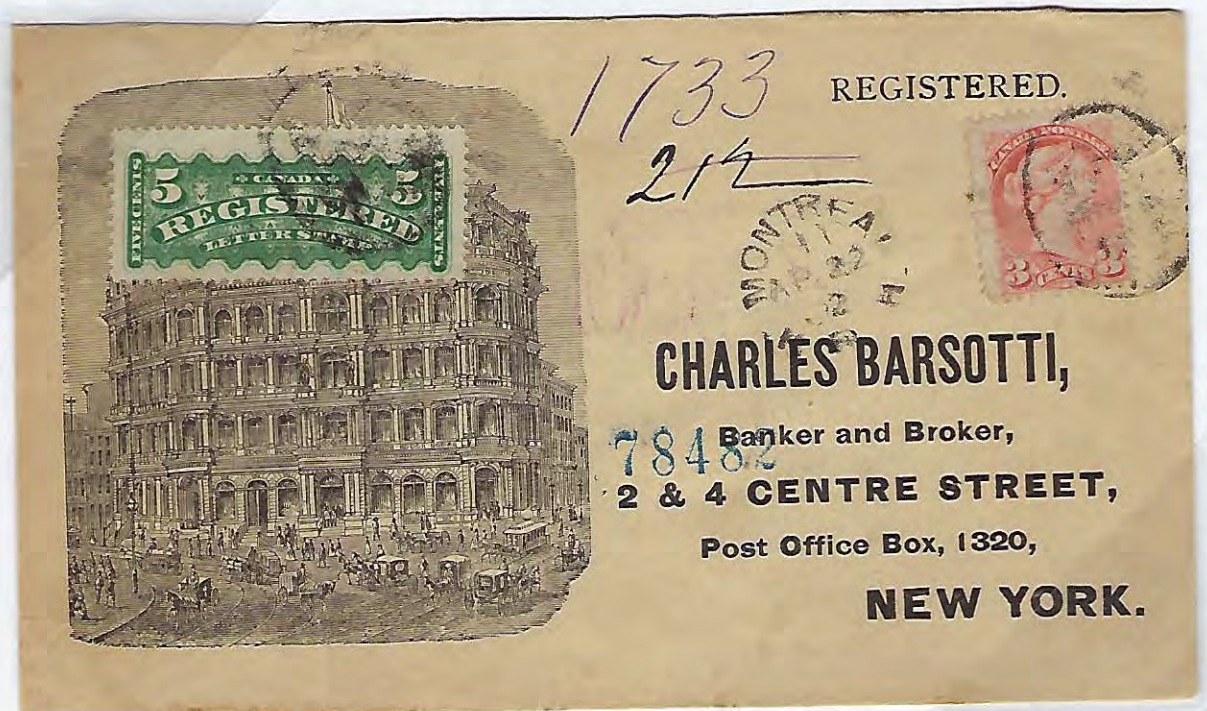
Envelope addressed to Newburyport Mass with a free strike MONTREAL/N R H 8/MR18/75 type 1 no rim RECEIVING HOUSE dispatch cancel, a second MONTREAL/C.E. 1/MR18/75 duplex dispatch tying a 3c small queen, a BOSTON/MASS MR18/10AM CDS transit.

NRH HANDSTAMP USED AS A DISPATCH ON UPU REGISTERED MAIL



A registered cover to France with a 10c small queen stamp paying the double UPU rate and a 5c RLS stamp paying the registration fee (Less than 10 copies known Ex. Burrus). MONTREAL/N R H 8/JA8/89 type 1 RECEIVING HOUSE dispatch cancel; black 1-line Too Late marking, red REGISTERED, LONDON N/21JA89 oval transit and red double circle N.B. PARIS N.B., CHARGEMENTS 21/JANV/89 receiver.

NRH HANDSTAMP USED AS DISPATCH CANCEL ON REGISTERED MAIL TO THE USA



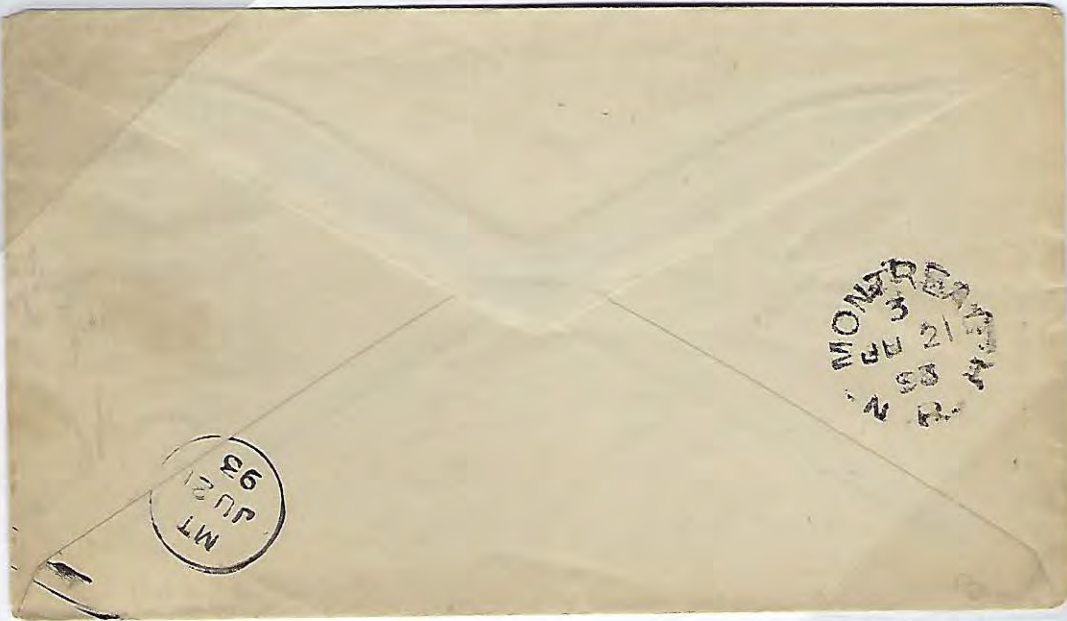
Illustrated envelope addressed to NEW YORK with a R in oval tying a 3c small queen stamp and a 5c RLS, a MONTREAL/N R H 11/AP22/92 type 1 no rim RECEIVING HOUSE cancel, a MONTREAL, CANADA. AM/AP22/92 CDS and a mauve large B in circle 4/24/92.

RECEIVING HOUSE CANCEL

TYPE I

As early as June 21st 1893, a rim is appearing in the lower part, it gives the strike the appearance of a split ring cancel. Some ink marks between the letters could be interpreted as dots as in a type 2 cancel.

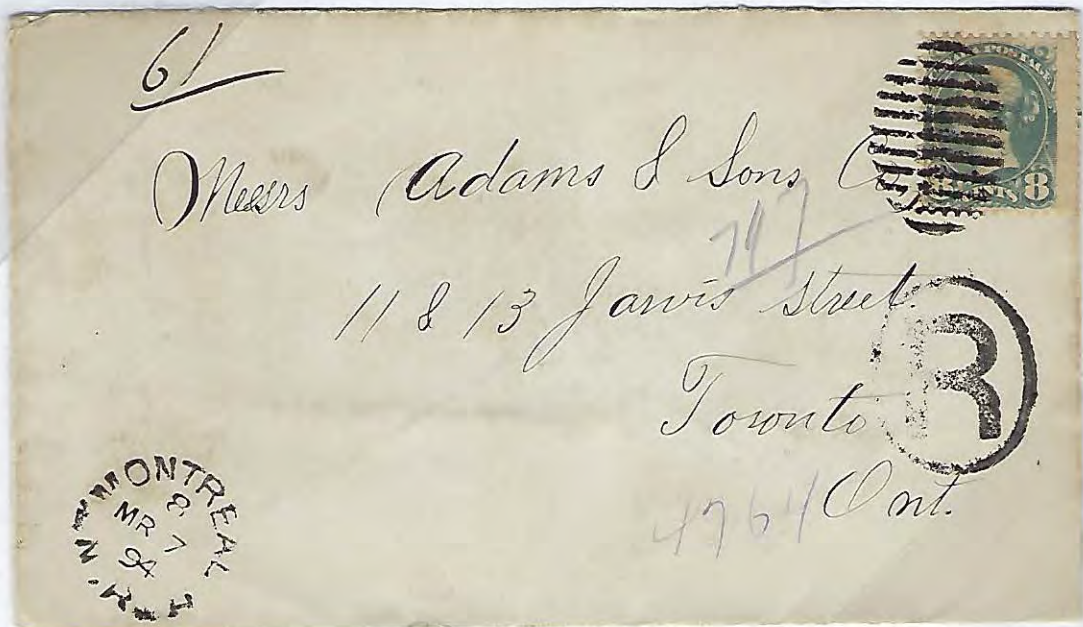
NRH DAMAGED HANDSTAMP – ERD



Cover addressed to 207 St Hubert with a MONTREAL/CANADA 10/JU21/AM CDS dispatch, a SORTING cancel type I-18 MT/JU21/93 and MONTREAL/N R H 3/JU21/93 type 1 no rim RECEIVING HOUSE cancel.

The worn state of the NRH type 1 hammer used to on this letter explains why it was replaced 3 weeks later by the new N.R.H. type 2B hammer which was proofed on the 29th of March 1894.

NRH DAMAGED HANDSTAMP – LRD



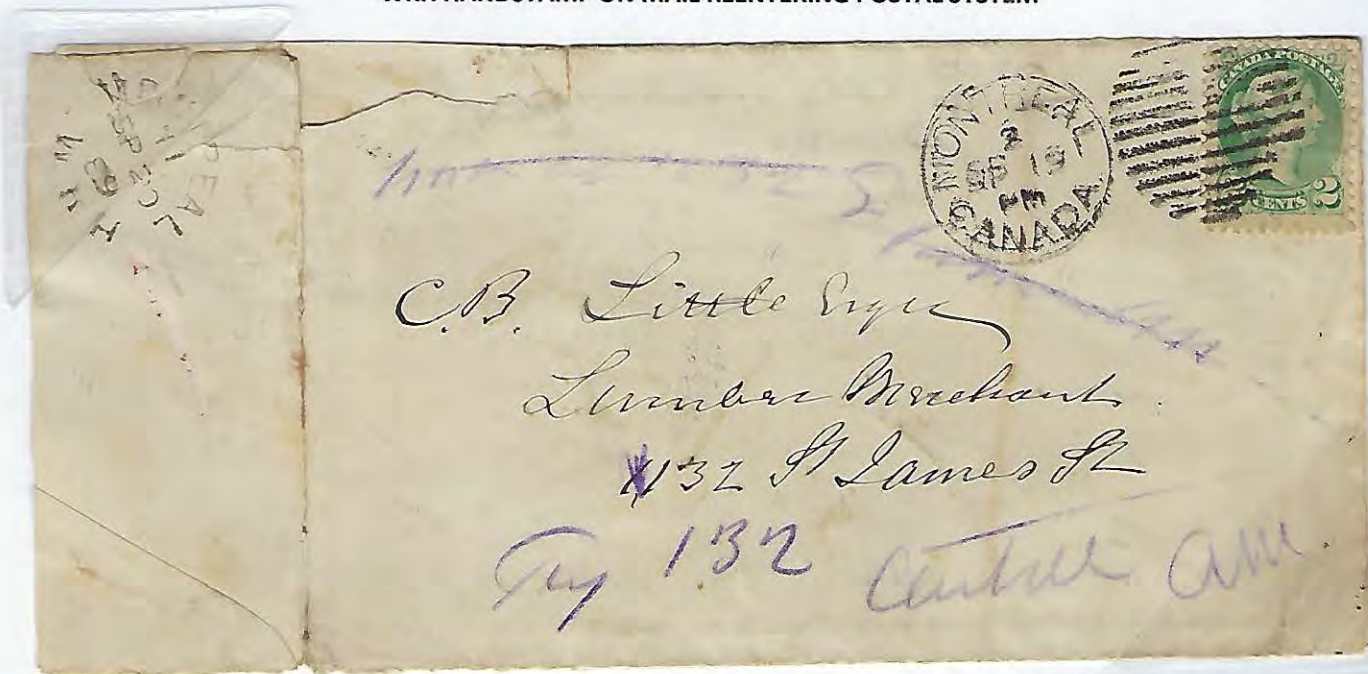
Cover addressed to Toronto Ont with a 11-line oval tying an 8c small queen stamp, a R in oval free strike, a MONTREAL/N R H 8/MR 7/94 type 1 no rim RECEIVING HOUSE cancel, a MONTREAL CANADA MR 7 A11/94 hammer 1 squared circle precursor and a TORONTO, CANADA. AM/MR 8/94 CDS receiver.

NRH HANDSTAMP USED ON UNDELIVERABLE MAIL



This postcard canceled by a TORONTO/ONT PM/MR6/91 split circle did not get a receiver cancel upon it's arrival in Montreal. It received a SORTING cancel (type I-17 2/MR7/91) in the main office and was scheduled to go out on the 2nd dispatch run. Three days later the postcard was returned and received a type 1 RECEIVING HOUSE cancel MONTREAL/N R H 3/MR10/91, it received a manuscript *change* in blue and the 462 St Urbain was scratched, and a new 149 Metcalfe St address added. The postcard was resorted and received a second SORTING cancel for delivery on the first dispatch on MR11 (TYPE I-17 1/MR11/91).

WRH HANDSTAMP ON MAIL REENTERING POSTAL SYSTEM



Cover addressed to 1132 St James St and redirected to 132 centre with a MONTREAL/CANADA 7/SP19/PM duplex dispatch tying a 2c small queen stamp, SORTING cancel 4/SP19/89 type I-17, type 1 RECEIVING HOUSE cancel MONTREAL/W R H 11/SP20/89 and second SORTING cancel 4 (rotated 180°)/SP20/89 type I-17.

WRH HANDSTAMP USED AS A DISPATCH ON REGISTERED MAIL



Envelope addressed to Halifax Nova Scotia with 3x R in oval tying 2x 3c small queen stamps (1 stamp with (B)RITISH AMERICAN BA(NK) imprint) and a 2c RLS, a free identical strike and a type 1 RECEIVING HOUSE cancel MONTREAL/W R H 3/JA24/87; back stamped with a HALIFAX, CANADA JA26/87 CDS receiver.

WRH HANDSTAMP USED AS A DISPATCH ON REGISTERED MAIL TO USA



Cover addressed to Lockport NY with 3 R in oval tying 2x 3c small queen stamps and a 2c RLS, a type 1 RECEIVING HOUSE cancel MONTREAL/W R H 3/DE 7/89 no rim, a TOR&KING, P.O.CAR WEST/DE 8/89 transit CDS and a 3-line purple BUFFALO, N.Y./DEC 9, 1889/REG. DIV. transit.

WRH HANDSTAMP ON MAIL REENTERING POSTAL SYSTEM – TWICE – LRD



Cover from Berlin Germany addressed to Montreal; redirected at least 3 times in Montreal and twice in Toronto. 20 pfennig stamp canceled by a WESBADEN/2N 22/6/91 CDS cancel; back stamped with a MONTREAL/QUE. 10/JUL 2/AM split circle receiver, a I-17 SORTING cancel 2/JY 2/91, a MONTREAL/W R H 1/JY 2/91 type 1 RECEIVING HOUSE cancel, a second I-17 SORTING cancel 4/JY 2/91, a third I-17 SORTING cancel 7/JY 2/91, a second MONTREAL/W R H 11/JY 3/91 type 1 RECEIVING HOUSE cancel and finally a TORONTO/ONT. 9/JY 4/91 split circle receiver.

RECEIVING HOUSE CANCEL



TYPE 2A – 2B

TYPE 2 RECEIVING HOUSE cancels

The **type 2A RECEIVING HOUSE** cancels have the same structure as the type 1 cancels but can easily be distinguished from them as they are clearly of the split circle variety and a dot has been added after each letter. They have a 22mm diameter and use a 3-line indicia format: time/date/year.

The **type 2B RECEIVING HOUSE** cancels have the same structure as the type 2A cancels but can easily be distinguished from them as they have a 25mm diameter and use a 2-line indicia format: date/time.

PERIOD OF USE OF THE TYPE 2 RECEIVING HOUSE CANCELS

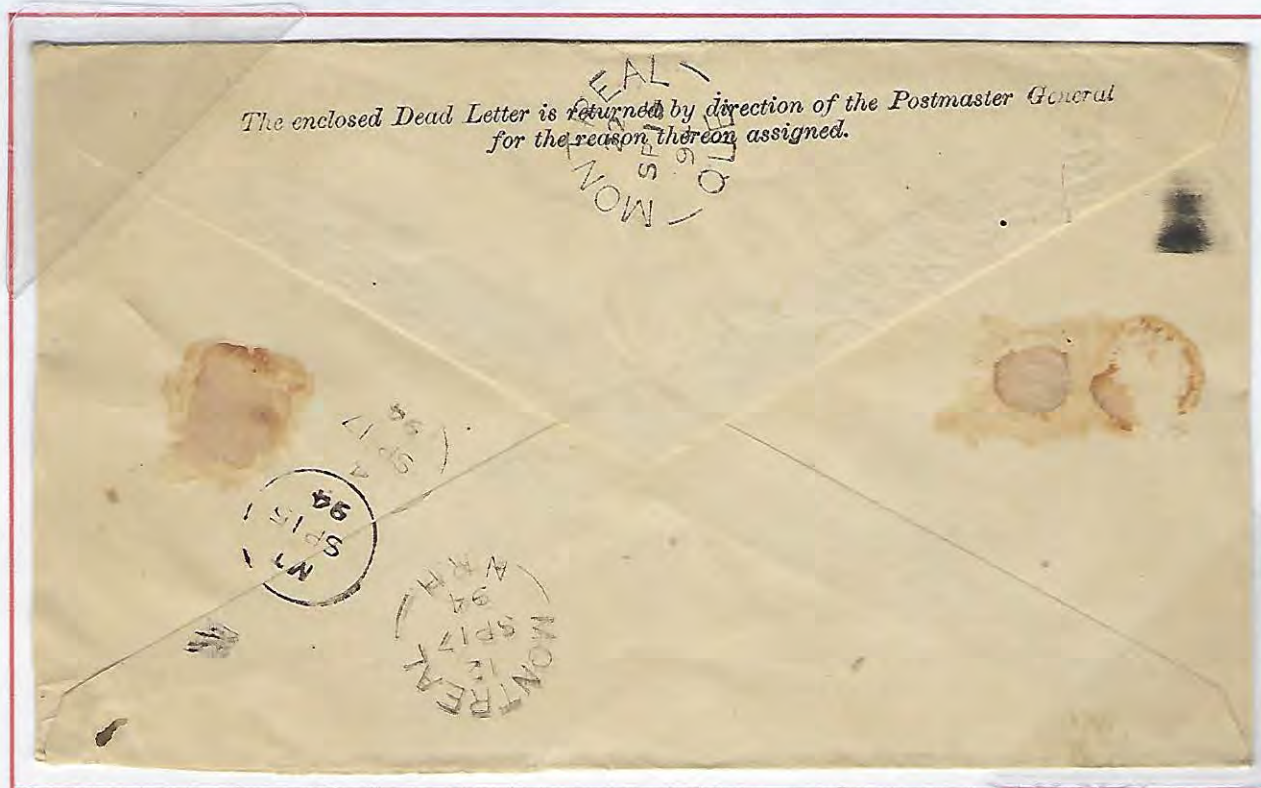
TYPE 2A	MARKINGS	TYPE	ERU	LRU	KNOWN TIME INDICIA													TYPE 2B
					1	2	3	4	5	6	7	8	9	10	11	12		
	N.R.H.	2A	12/SP17/94	8/DE12/94									X				X	
	W.R.H.	2A																
	E.R.H.	2A																
	N.R.H.	2B	SP 8/8 (96)	OC16/3 (06)	X	X	X	X				X	X		X		X	
	W.R.H.	2B																
	E.R.H	2B	SP2/1 (89)	AU22/1? (04)	X	X	X	X	X				X		X		X	

RECEIVING HOUSE CANCELS

TYPE 2A

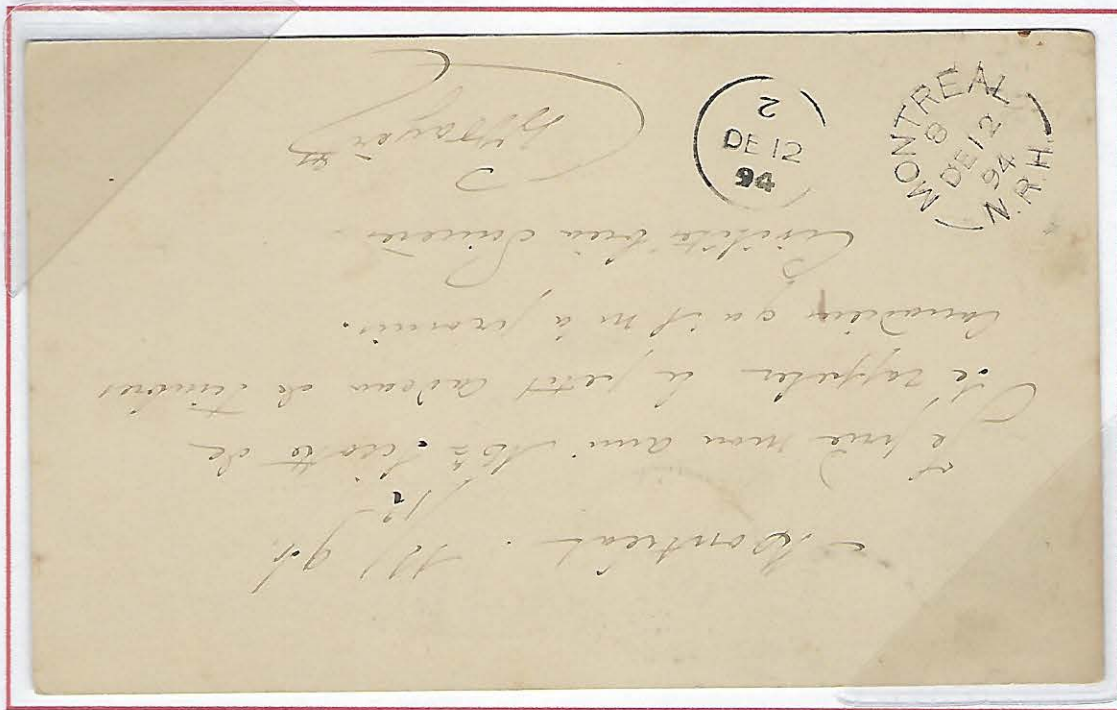
The fact that only two strikes are known presently might be explained by the shortness of use; the type 2A hammer was used only from September to December 1894. Even though the N.R.H. type 2A hammer was proofed on February 23, 1882, the type 1 NRH hammer was used as late as 8/MR 7/94 in a damaged state and the type 2B was proofed only 3 weeks later, on the 29th of March 1894.

N.R.H. HANDSTAMP ON MAIL REENTERING POSTAL SYSTEM FROM DLO -- ERD



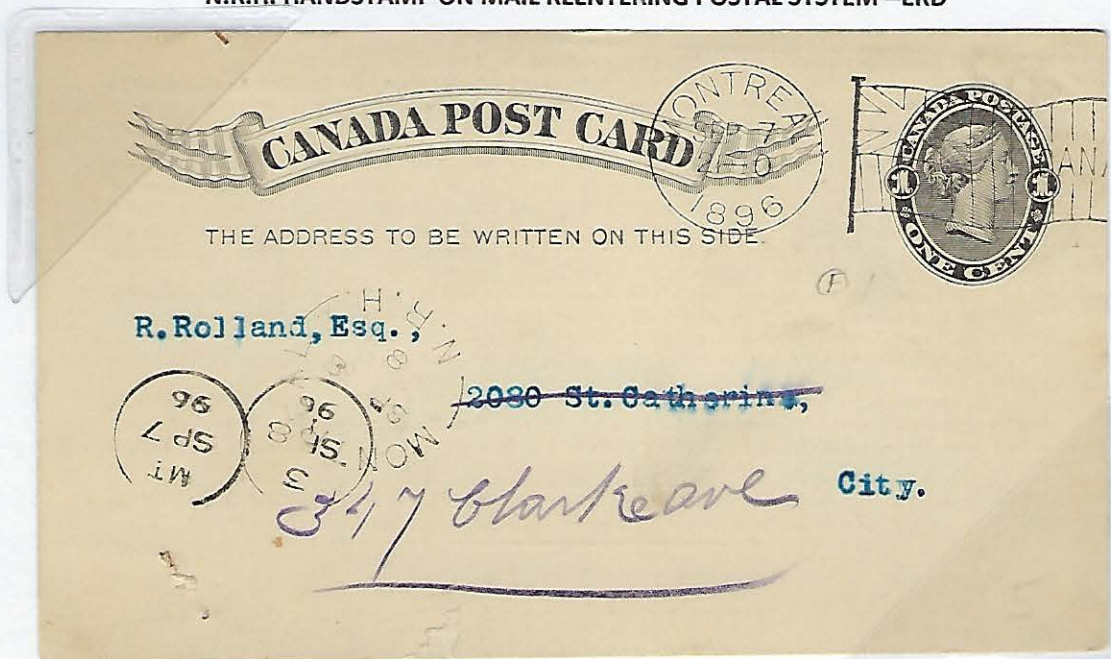
OTTAWA-CANADA, FREE. 3/SP15/94 CDS, MONTREAL, QUE. 22/SP15/94 split circle receiver, SORTING MT/SP15/94 type I-18, a MONTREAL/N.R.H. 12/SP17/94 type 2A RECEIVING HOUSE cancel (1 of 2 type 2A known copies) and a second SORTING cancel 4/SP17/94 type I-18.

N.R.H. RECEIVING HOUSE CANCEL USED ON REDIRECTED MAIL -- LRD



Postcard addressed to 518 rue Cadieux with a MONTREAL CANADA 24/DE 11/94 duplex dispatch, a SORTING type I-17,5 MT/DE 11/94, a second SORTING 2(inverted)/DE12/94 (type 1-17) and a MONTREAL/N.R.H. 8/DE12/94 type 2A RECEIVING HOUSE cancel. Second of 2 known copies.

N.R.H. HANDSTAMP ON MAIL REENTERING POSTAL SYSTEM --ERD



Postcard addressed to City with a MONTREAL, CANADA. SEP 7/21—0/1896 flag, a SORTING type I-18 MT/SP 7/96 cancel, a MONTREAL/N.R.H. SP 8/8 type 2B split circle RECEIVING HOUSE cancel and a second SORTING cancel type I-18 3/SP 8/96.

N.R.H. HANDSTAMP AS A DISPATCH CANCEL



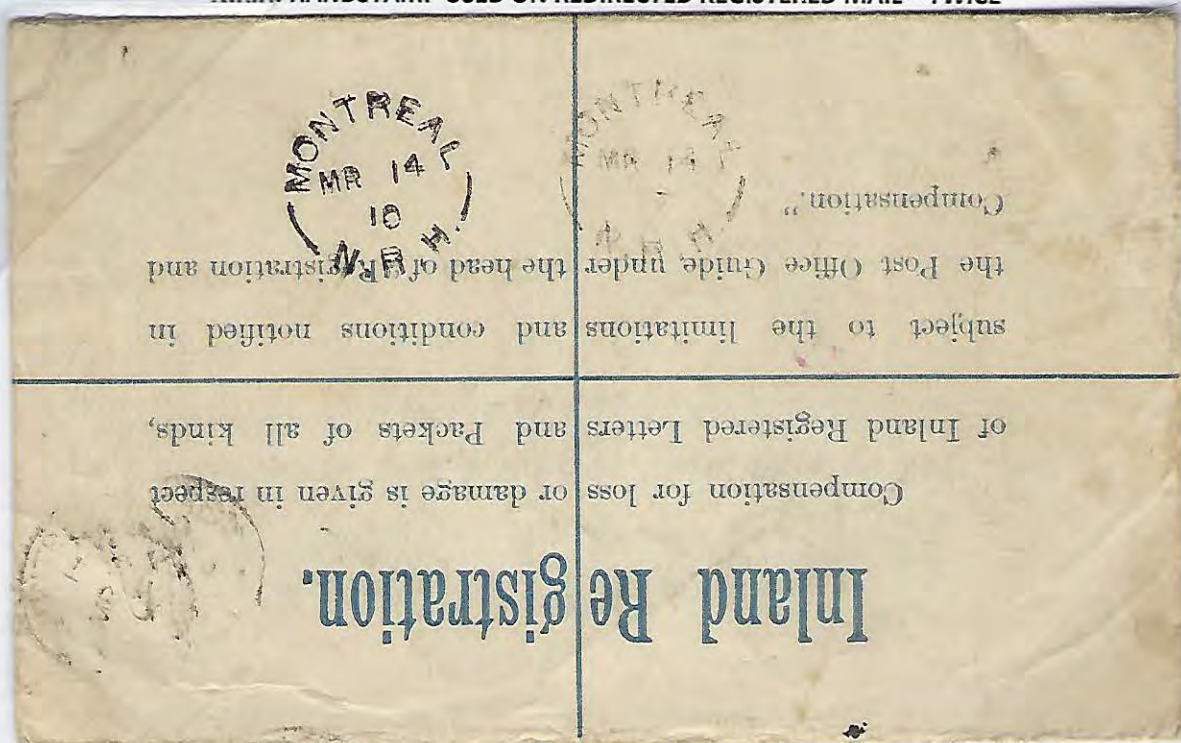
Postcard addressed to London England with 1c Edward VII (underpaid) and a MONTREAL/N.R.H. JU 7/1 type 2B split circle RECEIVING HOUSE cancel as a dispatch cancel. As no other Montreal dispatching cancel are to be found on this postcard, we can deduce that it was either handed to a carrier or deposited at the receiving house. It received a small circle T5 postage due marking (5 centimes as the UPU markings were in French) and an equivalent English 1^d /F.B. (Foreign Bureau) postage due handstamp. A London CDS receiver cancel is also found (LONDON-N/10 6AM/JU19/05).

N.R.H. HANDSTAMP AS A RECEIVER CANCEL



Private postcard from Wm. Rennie Rennie's Seeds Toronto, Canada. with an untied 1c Edward VII (damaged) addressed to Montreal P.Q. with a MONTREAL/N.R.H. AP 2/1 type 2B split circle RECEIVING HOUSE cancel as a receiver.

N.R.H. HANDSTAMP USED ON REDIRECTED REGISTERED MAIL – TWICE



Registered cover from Great Britain addressed to Montreal with a LEIGHTON BUZZARD MR2/04 dispatch CDS tying a 1d Edward VII stamp, 2 transit oval REGISTERED, LIVERPOOL. 7 AM/3 MR 04, back stamped with a MONTREAL, ????. 14/MR14/0(4) CDS, a MONTREAL/N.R.H. MR 14/7 type 2B split circle RECEIVING HOUSE cancel and a second MONTREAL/N.R.H. MR 14/10 split circle.

N.R.H. HANDSTAMP USED ON REDIRECTED REGISTERED MAIL – TWICE



Cover addressed to Montreal Canada with a partial 1906 duplex, stamp fallen off, a MONTREAL/CANADA. AU8/06 CDS, a WASHINGTON/D.C. SEP27/11-30A/1906 CDS, back stamped with a MONTREAL, CAN.REC'D JUL20/4-PM/1906 CDS receiver, a MONTREAL/N.R.H. JY 21/3 split circle RECEIVING HOUSE cancel, a MONTREAL/N.R.H. JY 23/3 split circle RECEIVING HOUSE cancel, a partial MONTREAL/???? CDS under 2 Post Office Department/OFFICIALY SEALED/USA stamps, a D.L.O. CANADA, MONTREAL-BRANCH. AU22/06 CDS, a red DEAD LETTER BRANCH, CANADA, SP 6/06 CDS, a red DEAD LETTER OFFICE SEP/26/1906 double CDS and a partial purple MONTREAL/1906.

N.R.H. and E.R.H. HANDSTAMP USED ON STAMPS

No, on cover, RECEIVING HOUSE cancels tying a stamp are known to the author. On stamp cancels of type 2B are known for the EAST and the NORTH RECEIVING HOUSE; all are rare. These cancels could be from mail deposited at the Receiving House for distribution in the same district.



MONTREAL
SP 21
8
E.R.H.



MONTREAL
6 ON (rotated 180°)
8
E.R.H.



MONTREAL
DE 6
12
N.R.H.



MONTREAL
FE 13
3
E.R.H.



MONTREAL
DE 17
10
E.R.H.

E.R.H. HANDSTAMP USED AS A DISPATCH ON REGISTERED MAIL -- ERD



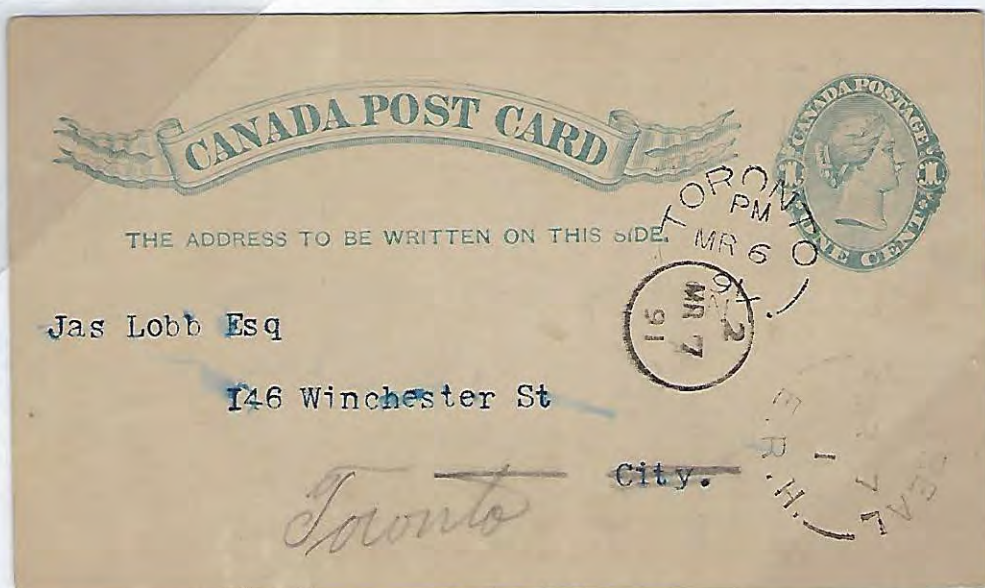
Cover addressed to Stonefield Argenteuil Co P.Q. with 3x R in oval tying a band of 4x 2c small queen stamps plus a free strike, a MONTREAL/E.R.H. AU 5/5 type 2B RECEIVING HOUSE cancel dispatch and back stamped with a STONEFIELD/QUE. AU 6/90 split circle cancel receiver.

E.R.H. HANDSTAMP USED ON REDIRECTED REGISTERED MAIL – TWICE



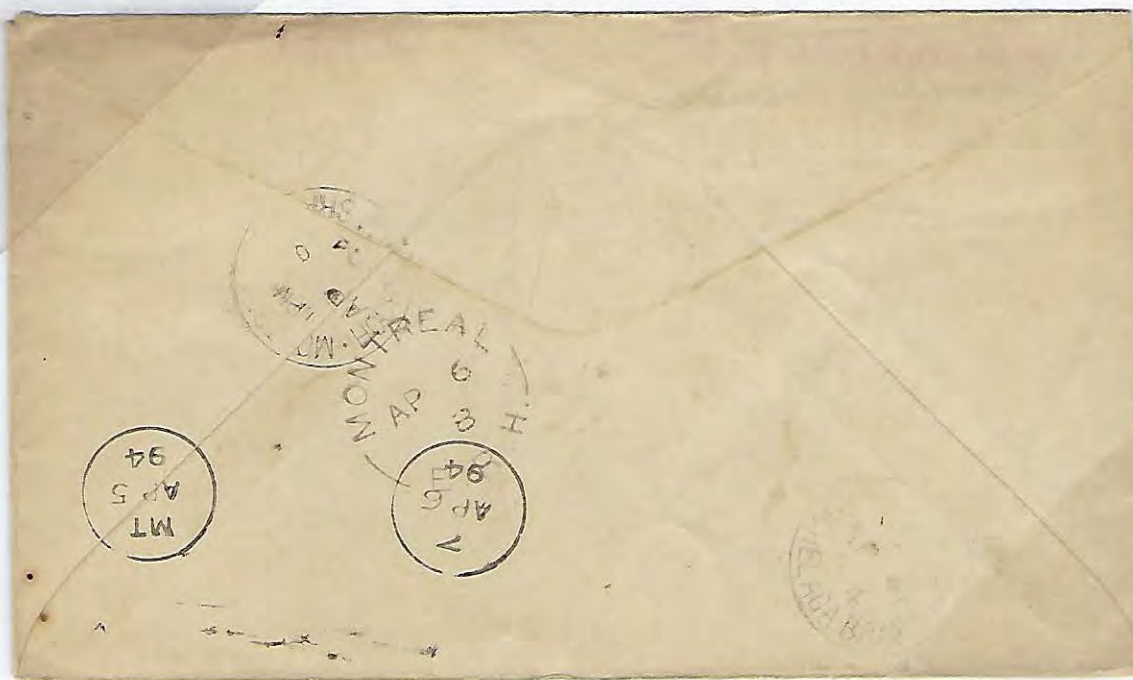
Cover addressed to Montreal with a R in oval tying an 8c small queen stamp plus a free strike, a ST-ROCH DE QUEBEC, QUE. FE1/97 CDS, a strait line NOT CALLED FOR cancel, MONTREAL, CANADA. FE1 5P5/97 hammer 3 squared circle precursor, back stamped with 2x ST-ROCH DE QUEBEC, QUE. FE1/97 CDS, a QUEBEC, CANADA. PM/FE1/97 CDS transit cancel, a MONTREAL, CANADA. FE2 A9/97 hammer 3 squared circle precursor, a MONTREAL/E.R.H. FE 2/3 split circle RECEIVING HOUSE cancel, a MONTREAL, CANADA. FE2 P6/97 hammer 4 squared circle, a MONTREAL/E.R.H. FE 2/10 split circle RECEIVING HOUSE cancel, a DEAD-LETTER-OFFICE, CANADA. FE??/1897 CDS and a REC'D AT DEAD LETTER OFFICE, CANADA, 1/FE 16/97 CDS.

MAIL PASSING IN THE E.R.H. TO CORRECT SORTING MISTAKE - TOWN ERROR




Postcard addressed to City with a dispatch TORONTO, ONT. PM/MR 6/91 split circle, erroneously sent to Montreal, mistake not caught at sorting, SORTING cancel type I-17 2/MR 7/91 applied, undeliverable and returned to EAST RECEIVING HOUSE where it received a MONTREAL/E.R.H. MR 7/1 RECEIVING HOUSE cancel, the word City was scratched, and Toronto was penciled in.

MAIL PASSING IN THE E.R.H. TO CORRECT SORTING MISTAKE – DISTRICT ERROR



Cover addressed to Notre Dame East/City without a door number with a MONTREAL/CANADA 19/AP 5/94 duplex dispatch tying a pair of 1c small queen stamps, sorted for delivery in the East district with a SORTING type I-17,5 MT/AP5/94 cancel, undeliverable it received a MONTREAL/E.R.H. AP 6/8 RECEIVING HOUSE cancel, resorted SORTING type I-17,5 2(inverted)/AP 6/94 and finally properly sent to the Hochelaga branch where it received a MONTREAL/HOCHELAGA BRANCH. 1PM/AP 6/94 CDS.

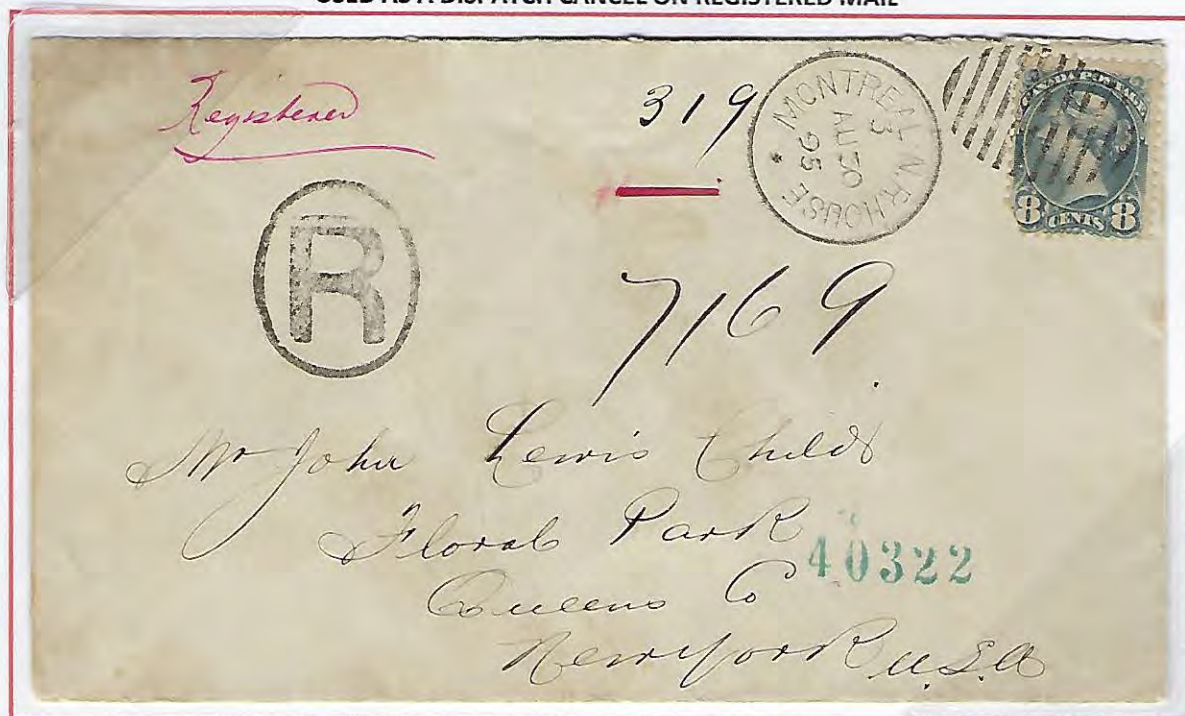
PERIOD OF USE OF THE TYPE 3 RECEIVING HOUSE CANCELS

	MARKINGS	TYPE	ERU	LRU	KNOWN TIME INDICIA											
					1	2	3	4	5	6	7	8	9	1	1	1
	N.R.HOUSE/	3	3/AU30/95				X							0	1	2
	W.R.HOUSE/	3														
	E.R.HOUSE/	3														

The type 3 RECEIVING HOUSE cancel is unreported for both the EAST and WEST RECEIVING HOUSE.

Even though the type 3 North Receiving House was proofed on December 15th, 1894 and used prior to the first reported use of the type 2B cancel for North Receiving House, we still will refer to it as type 3 as a type 2B East Receiving House cancel was in use as early as 1889. The type 2B cancel for the North Receiving House was still in use in 1906.

**N.R.HOUSE – ONLY KNOWN COVER WITH A TYPE 3 RECEIVING HOUSE CANCEL
USED AS A DISPATCH CANCEL ON REGISTERED MAIL**



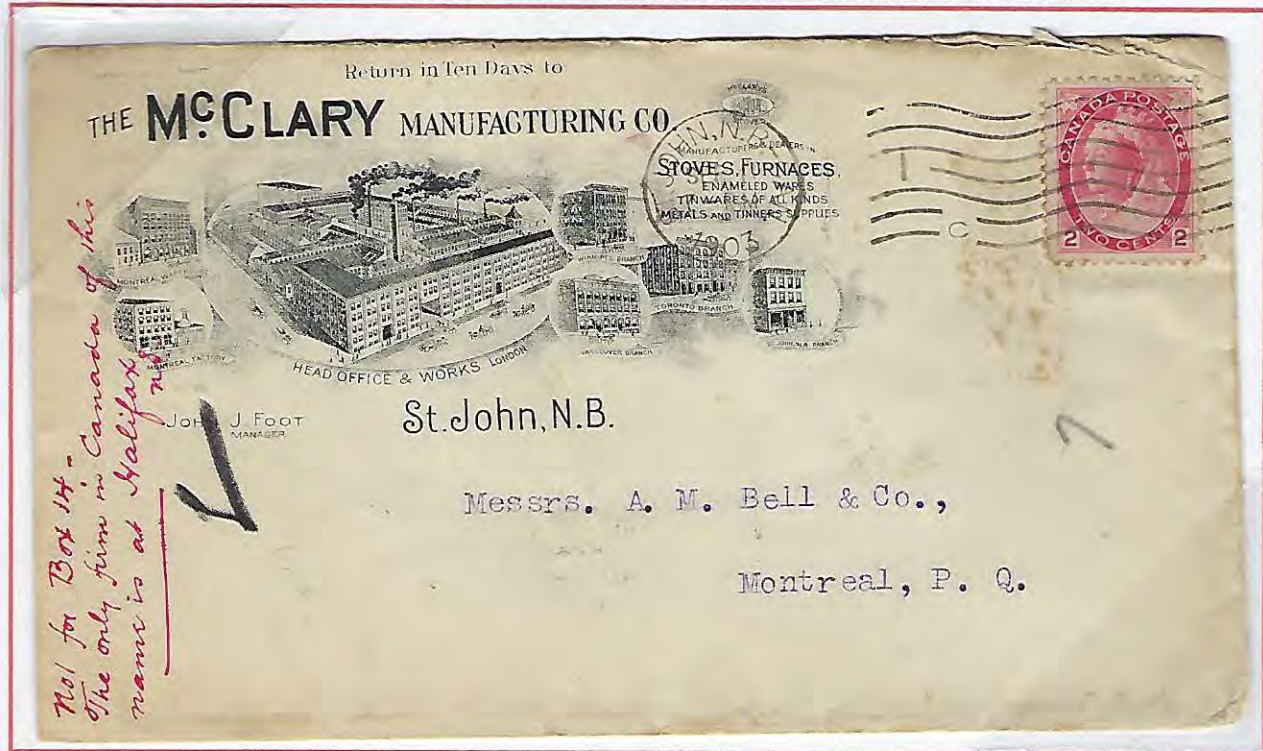
Registered envelope addressed to New York U.S.A. with an 11-line oval cancel tying an 8c small queen, a free R in oval cancel and a free MONTREAL-N.R.HOUSE/. 3/AU30/95 RECEIVING HOUSE cancel; back stamped with 2x R in oval, 2x MONTREAL-N.R.HOUSE/. 3/AU30/95 RECEIVING HOUSE cancel, a MONTREAL-CANADA AU30P5/95 hammer 3 square circle precursor transit cancel and a large O in a purple circle dated 9/2/95 receiver cancel.

RECEIVING HOUSE CANCEL TO LETTER CARRIER DEPOT CANCEL

THE END OF AN ERA, THE COMING OF THE L.C.D. CANCELS.

The West Receiving House had been split in 2 and at the same time changed its W.R.H. cancel for 2 L.C.D. cancels. The arrival of the L.C.D. handstamps signifies the end of the Receiving House cancels.

COVER WITH EAST & NORTH RECEIVING HOUSE CANCELS AND 2 WEST L.C.D. CANCELS



MONTREAL E.R.H. SP16/2	MONTREAL N.R.H. SP16/3.	NOTRE-DAME ST W.MONTREAL. L.C.D. 14/SP16/03	ST-CATH.ST. W.MONTREAL L.C.D. 1/SP15/03

Illustrated envelope from THE MCCLARY MANUFACTURING CO. addressed to Montreal P.Q. with a ST.JOHN,N.B.-CAN./1903 SEP11/7-PM 1C flag tying a 2c Victoria numeral carmine stamp and a manuscript inscription " Not for Box 14-/The only firm in Canada of this/ name is at Halifax N.S."; back stamped with a MONTREAL,CAN.REC'D /1903 SEP13/11-AM, QUE. CDS receiver, a ST-CATH.ST.W.MONTREAL/L.C.D 1/SP15/03 CDS, a NOTRE-DAME ST W.MONTREAL/L.C.D. 14/SP16/03 CDS, a type 2B RECEIVING HOUSE cancel MONTREAL/E.R.H. SP16/2 and a type 2B RECEIVING HOUSE cancel MONTREAL/N.R.H. SP16/3.

CONCLUSION

In conclusion, nobody had published anything specifically about the SO-CALLED CARRIER MARKS in the last 40 years, but this subject is not even close to be completed. Let me finish by quoting Jacque Houser who started to write on the subject of the CARRIER MARKS in 1965: "When one considers the number of collectors who must have studied the stamps and postal markings of Canada for the last 50-60 years it seems quite unlikely that any new facts regarding 19th century handstamps could now be brought to light. At least, that was my feeling when I encountered my first handstamp of the type shown in the accompanying figure." This quote is still true today as it was more then 50 years ago.